

WAAS CH 73003 W08A	APP CRS 083°	Rwy Idg TDZE Apt Elev	5646 545 545
--	------------------------	-----------------------------	---

RNAV (GPS) RWY 8

LACONIA MUNI (LCI)

RNP APCH - GPS

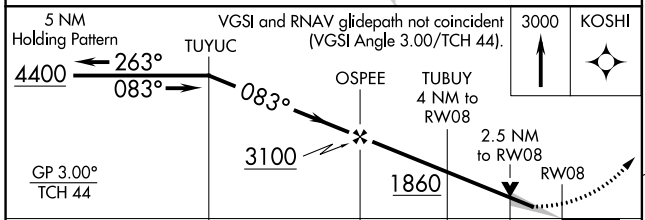
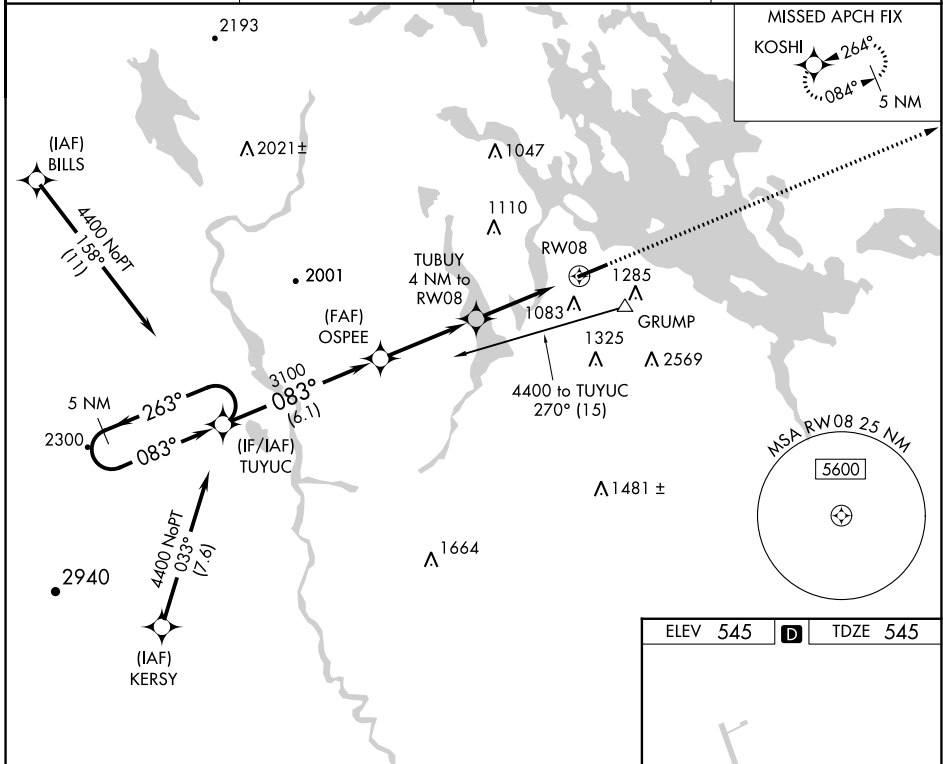
⚠ When local altimeter setting not received, use Concord altimeter setting and increase LPV DA to 1059 feet and all visibilities ¼ SM. Increase all MDAs 100 feet and LNAV visibility Cat C/D ½ SM. VDP NA when using Concord altimeter setting. Circling NA south of Rwy 8-26. Circling Rwy 26 NA at night. For Inop ALS, increase LPV visibility to 1½ SM and LNAV visibility Cat A to 1 SM Cats C and D visibility to 2 ½ SM.

MALSR

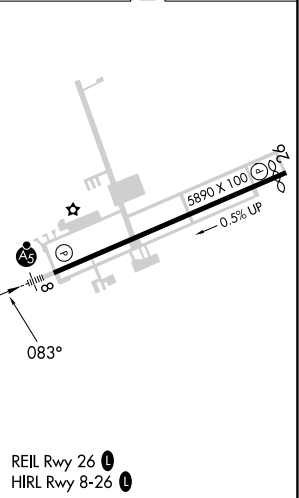


MISSED APPROACH:
Climb to 3000 direct KOSHI and hold.

AWOS-3PT 133.525	BOSTON APP CON 134.75 254.25	CINC DEL 119.85	UNICOM 123.0 (CTAF)
----------------------------	--	---------------------------	-------------------------------



ELEV 545	D	TDZE 545
----------	----------	----------



CATEGORY	A	B	C	D
LPV DA	978-¾		433 (500-¾)	
LNAV MDA	1380-¾	835 (900-¾)	1380-1⅞	835 (900-1⅞)
C CIRCLING	1420-1 875 (900-1)	1600-1½ 1055 (1100-1½)	2160-3 1615 (1700-3)	2860-3 2315 (2400-3)

NE-1, 26 DEC 2024 to 23 JAN 2025

NE-1, 26 DEC 2024 to 23 JAN 2025