

APP CRS	Rwy Idg	4743
064°	TDZE	2850
	Apt Elev	2857

RNAV (GPS) RWY 5

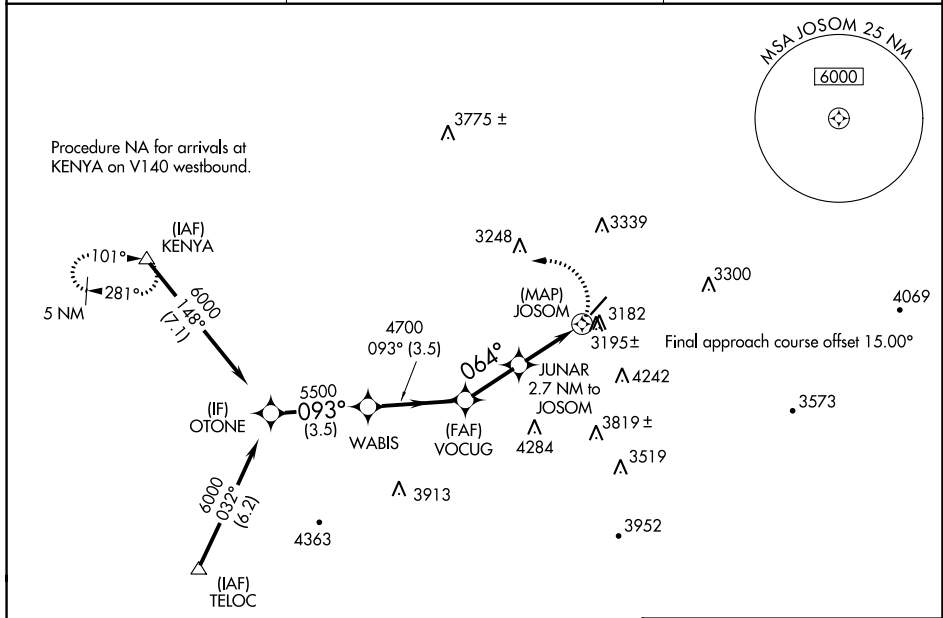
MERCER COUNTY (BLF)

RNP APCH.

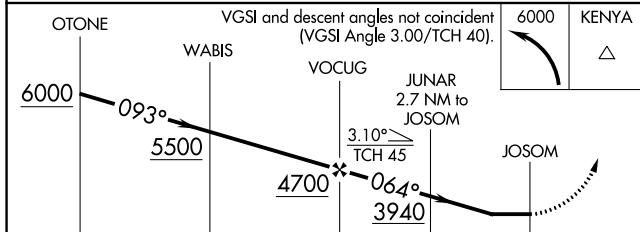
Procedure NA at night.
Rwy 5 helicopter visibility reduction below 1 SM NA.

MISSED APPROACH: Climbing left turn to 6000 direct KENYA and hold.

ASOS	INDIANAPOLIS CENTER	CTAF
132.725	126.575 257.85	122.9



ELEV	2857	TDZE	2850
------	-------------	------	-------------



HIRL Rwy 5-23
REIL Rws 5 and 23

CATEGORY	A	B	C	D
LNVA MDA	3560-1	710 (800-1)	3560-2	3560-2 1/4
			710 (800-2)	710 (800-2 1/4)

NE-4, 26 DEC 2024 to 23 JAN 2025

NE-4, 26 DEC 2024 to 23 JAN 2025