

VOR/DME BLF  
**115.05**  
 Chan **97** (Y)

APP CRS  
**225°**

Rwy Idg **4743**  
 TDZE **2857**  
 Apt Elev **2857**

**VOR RWY 23**  
 MERCER COUNTY (BLF)

DME required.

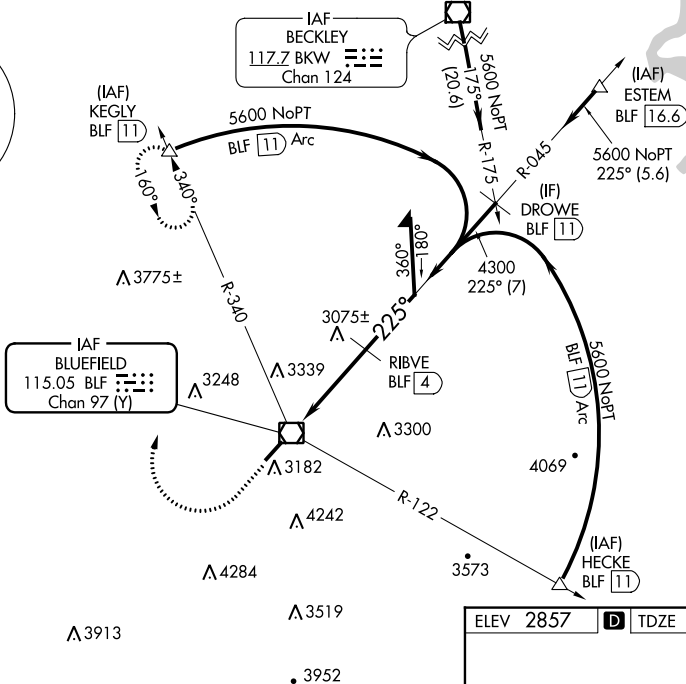
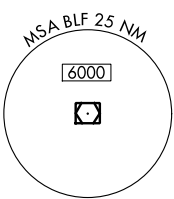
▼ When local altimeter setting not received, use Beckley altimeter setting and increase all MDAs 460 feet: increase S-23 visibility Cat A ¼ SM, Cat B ½ SM, Cat C 1 ½ SM, Cat D 1 ¼ SM; increase Circling visibility Cat A ¼ SM, Cat B ½ SM, Cat C ¾ SM. VDP NA when using Beckley altimeter setting. Circling NA southeast of Rwy 5-23.

MISSED APPROACH: Climb to 3800 then climbing right turn to 6000 on heading 020° and BLF R-340 to KEGLY/BLF 11 DME and hold.

ASOS  
**132.725**

INDIANAPOLIS CENTER  
**126.575 257.85**

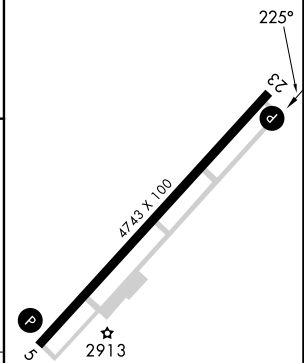
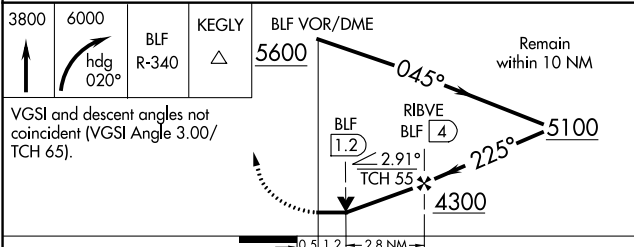
CTAF  
**122.9**



NE-4, 26 DEC 2024 to 23 JAN 2025

NE-4, 26 DEC 2024 to 23 JAN 2025

ELEV 2857 **D** TDZE 2857



CATEGORY	A	B	C	D
S-23	3440-1	583 (600-1)	3440-1 ½ 583 (600-1 ½)	3440-1 ¾ 583 (600-1 ¾)
CIRCLING	3440-1 583 (600-1)	3460-1 603 (700-1)	3640-2 ¼ 783 (800-2 ¼)	3780-3 923 (1000-3)

HIRL Rwy 5-23 **D**  
 REIL Rwys 5 and 23 **D**