

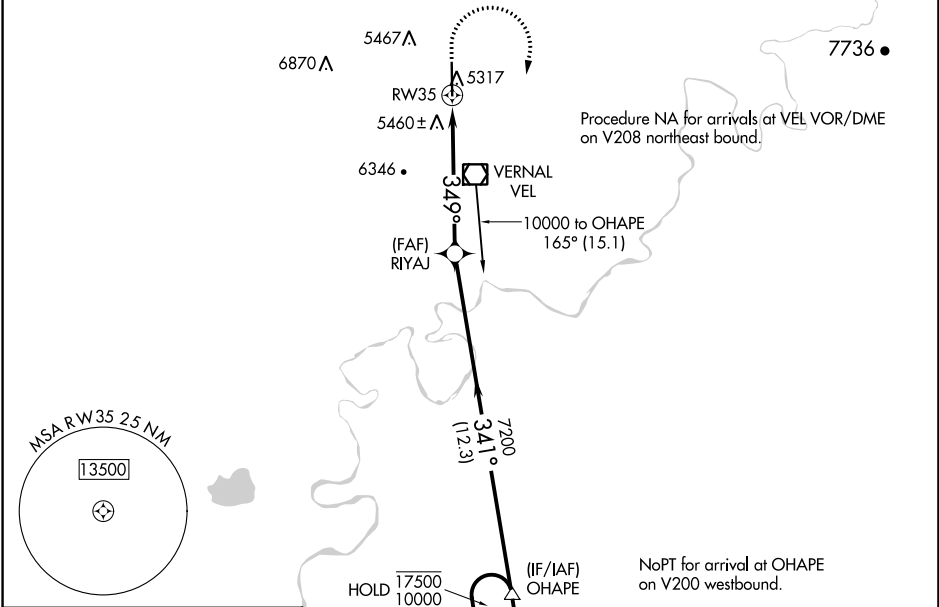
WAAS CH 90241 W35A	APP CRS 349°	Rwy Idg TDZE Apt Elev	7000 5274 5274
--	------------------------	-----------------------------	---

RNAV (GPS) Z RWY 35

VERNAL RGNL (VEL)

RNP APCH.	MISSED APPROACH: Climb to 7000 then climbing right turn to 10000 direct OHAPE and hold. *Missed approach requires minimum climb of 290 feet per NM to 8600.
<p>▼ Rwy 35 helicopter visibility reduction below 3/4 SM NA.</p> <p>⚠ For uncompensated Baro-VNAV systems, procedure NA below -26°C or above 54°C.</p> <p>❄ -26°C</p>	

ASOS 118.125	SALT LAKE CENTER 119.95 377.15	UNICOM 122.7 (CTAF)
------------------------	--	-------------------------------



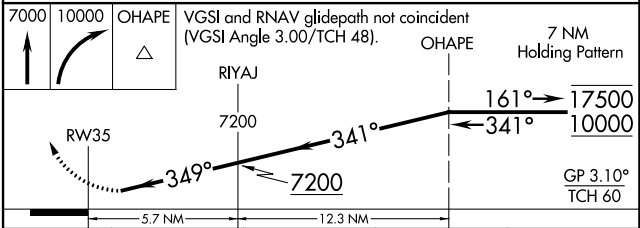
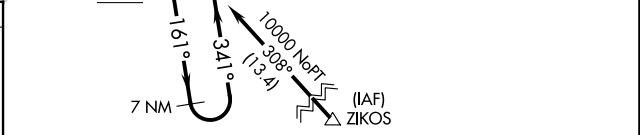
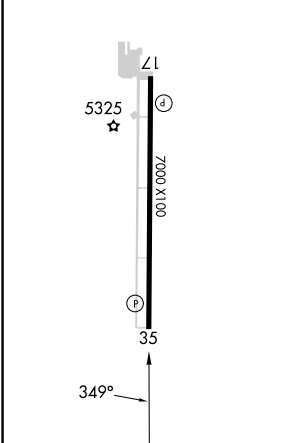
SW-4, 26 DEC 2024 to 23 JAN 2025

SW-4, 26 DEC 2024 to 23 JAN 2025

ELEV 5274	D	TDZE 5274
-----------	----------	-----------

REIL Rwy 17 and 35

MIRL Rwy 17-35



CATEGORY	A	B	C	D
LPV DA*		5610-1	336 (400-1)	
LPV DA		6175-2 1/2	901 (1000-2 1/2)	
LNAV/VNAV DA*		5786-1 3/8	512 (600-1 3/8)	
LNAV/VNAV DA		6093-2 1/2	819 (900-2 1/2)	