

VOR/DME VEL 114.15 Chan 88 (Y)	APP CRS 329°	Rwy Idg TDZE 7000 5274 Apt Elev 5274
---	------------------------	--

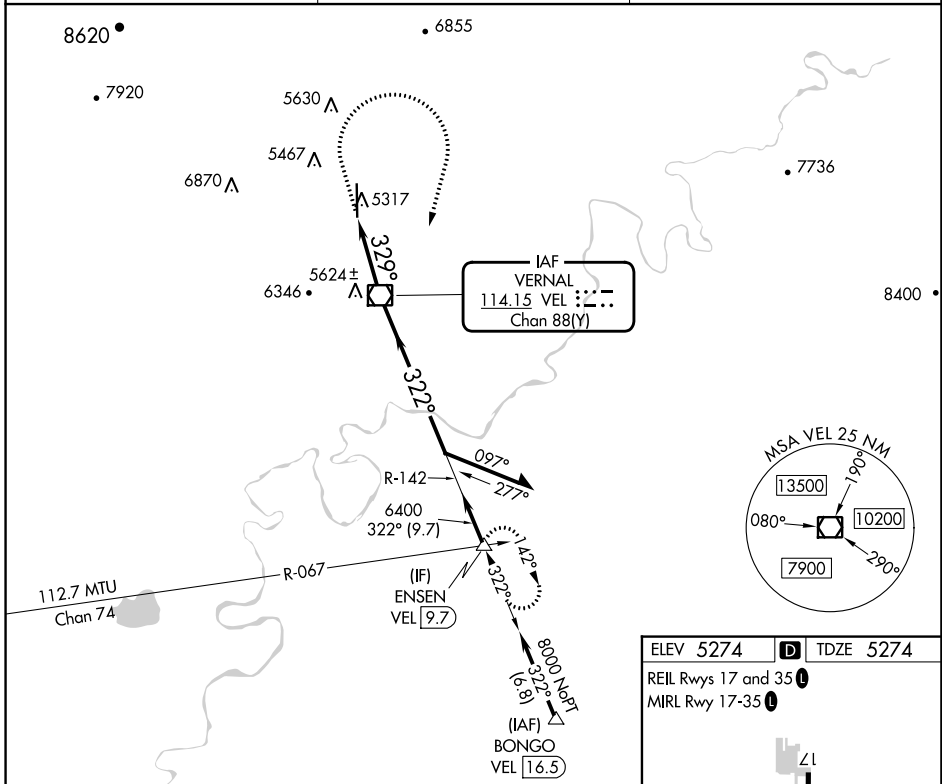
VOR RWY 35

VERNAL RGNL (VEL)

⚠ Circling NA west of Rwy 17-35.
⚠ Rwy 35 helicopter visibility reduction below 3/4 NA.
❄ -26°C

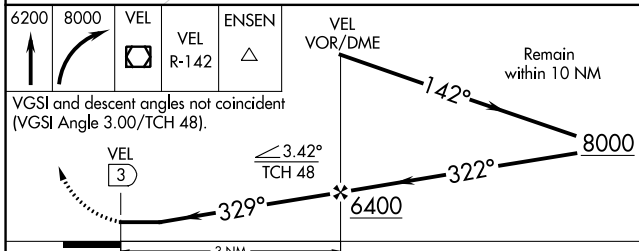
MISSED APPROACH: Climb to 6200 then climbing right turn to 8000 direct VEL VOR/DME and on VEL VOR/DME R-142 to ENSEN INT/9.7 DME and hold.

ASOS 118.125	SALT LAKE CENTER 119.95 377.15	UNICOM 122.7 (CTAF)
------------------------	--	-------------------------------

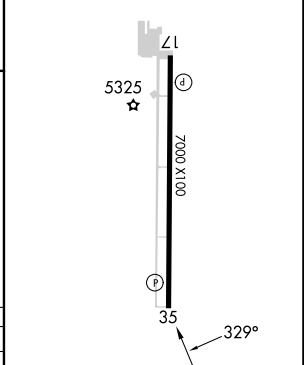


SW-4, 26 DEC 2024 to 23 JAN 2025

SW-4, 26 DEC 2024 to 23 JAN 2025



ELEV 5274	D TDZE 5274
REIL Rws 17 and 35	
MIRL Rwy 17-35	



CATEGORY	A	B	C	D
S-35	6160-1¼	886 (900-1¼)	6160-2½	886 (900-2½)
C CIRCLING	6160-1¼	886 (900-1¼)	6160-2¾ 886 (900-2¾)	6400-3 1126 (1200-3)

FAF to MAP 3 NM					
Knots	60	90	120	150	180
Min:Sec	3:00	2:00	1:30	1:12	1:00