

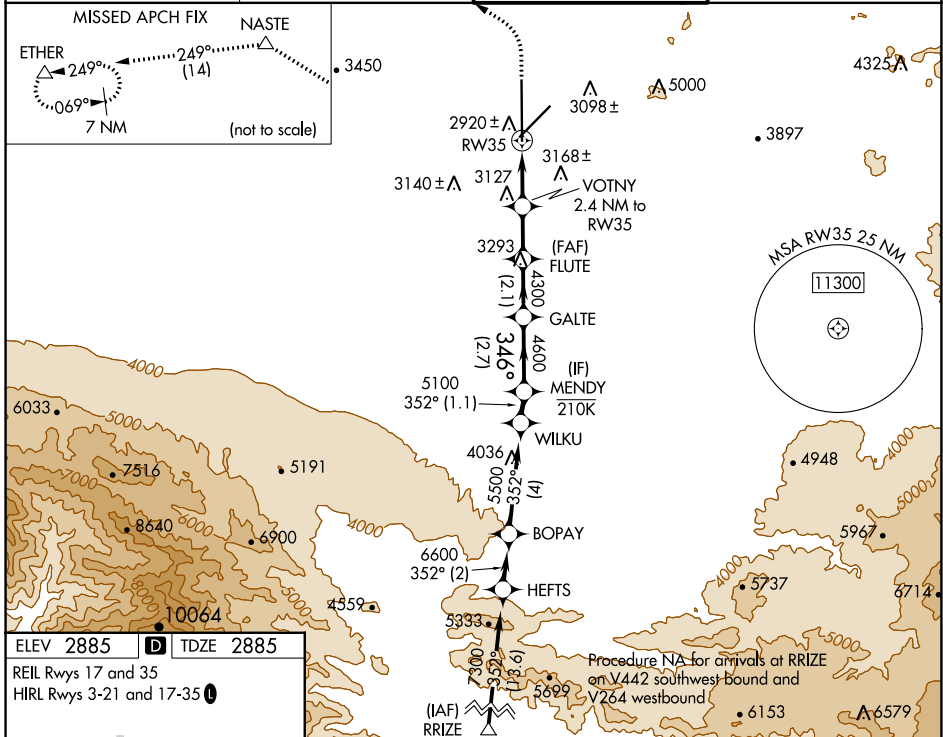
WAAS CH 97746 W35A	APP CRS 346°	Rwy Idg TDZE 2885 Apt Elev 2885	13052 2885 2885
--	------------------------	---	--

RNAV (GPS) RWY 35

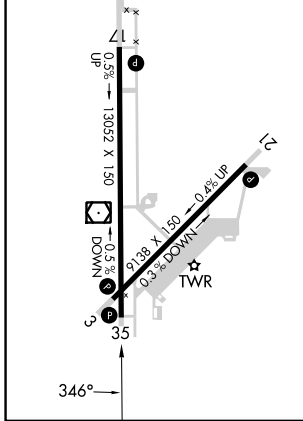
SOUTHERN CALIFORNIA LOGISTICS (V_CV)

RNP APCH - GPS.	MISSED APPROACH: Climb to 3500 then climbing left turn to 6000 direct NASTE and on track 249° to ETHER and hold.
<p>⚠ Circling for C and D southeast of Rws 35 and 21. ⚠ For uncompensated Baro-VNAV systems, LNAV/VNAV NA below -20°C or above 54°C.</p>	

ATIS ★ 135,475	JOSHUA APP CON 124.55 363.0	VICTORVILLE TOWER ★ 118.35(CTAF) 282.225	GND CON 124.45
--------------------------	---------------------------------------	--	--------------------------



ELEV 2885	D	TDZE 2885
REIL Rws 17 and 35 HIRL Rws 3-21 and 17-35		



3500	6000	NASTE	tr 249°	ETHER	VGSI and RNAV glidepath not coincident (VGSI Angle 3.00/TCH 64).
					FLUTE GALTE MENDY
					4300 4600 5100
					GP 3.00° TCH 60
					1.4 NM 1.9 NM 2.1 NM 2.7 NM

CATEGORY	A	B	C	D
LPV DA		3085-1	200 (200-1)	
LNAV/VNAV DA		3411-1½	526 (600-1½)	
LNAV MDA	3380-1	495 (500-1)	3380-1⅓	495 (500-1⅓)
CIRCLING	3380-1 495 (500-1)	3420-1 535 (600-1)	3460-1½ 575 (600-1½)	3760-2¾ 875 (900-2¾)

SW-3, 26 DEC 2024 to 23 JAN 2025

SW-3, 26 DEC 2024 to 23 JAN 2025