

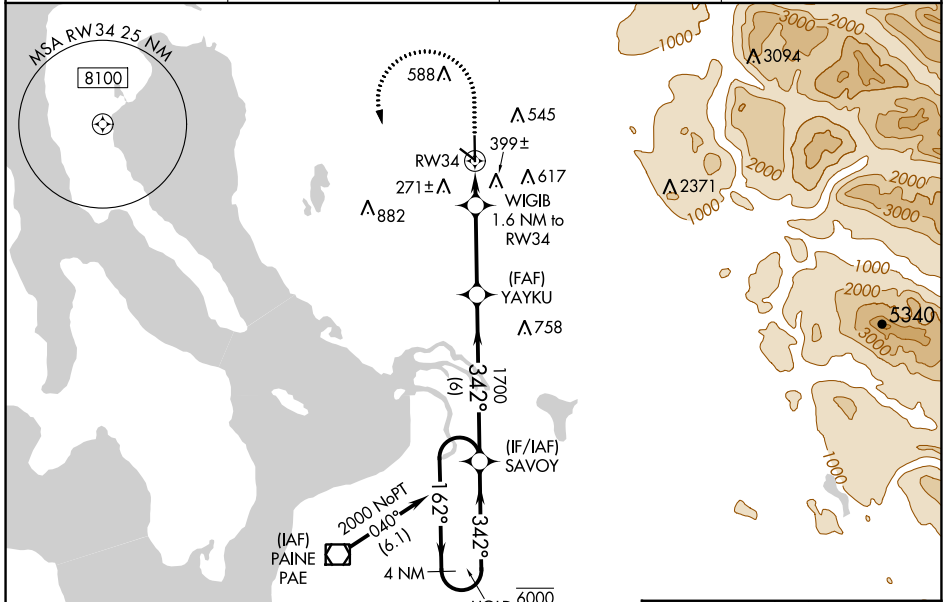
WAAS CH <b>90324</b> <b>W34A</b>	APP CRS <b>342°</b>	Rwy Idg TDZE <b>135</b> Apt Elev <b>142</b>	<b>5332</b>
--	------------------------	---	-------------

# RNAV (GPS) RWY 34

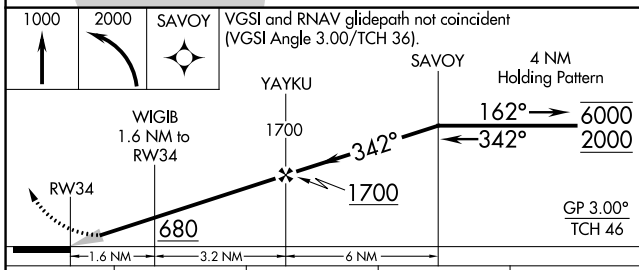
ARLINGTON MUNI (A WO)

RNP APCH-GPS.	MALS 	MISSED APPROACH: Climb to 1000 then climbing left turn to 2000 direct SAVOY and hold.
Inop table does not apply to LPV. For uncompensated Baro-VNAV systems, LNAV/VNAV NA below -15°C or above 54°C. For inop ALS, increase LNAV/VNAV all Cats visibility to 1 1/2 SM and LNAV Cat C and D visibility to 1 1/2 SM.		

AWOS-3PT <b>135.625</b>	SEATTLE APP CON <b>128.5 306.9</b>	CLNC DEL <b>121.725</b>	CTAF <b>122.725</b>
----------------------------	---------------------------------------	----------------------------	------------------------

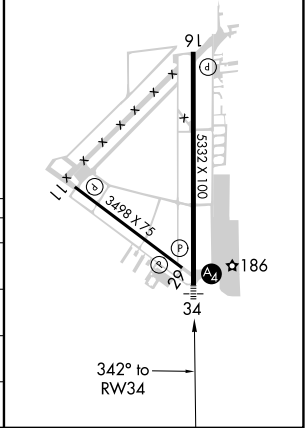


Procedure NA for arrival on PAE VOR/DME airway radials 298 CW 329, and on T268 westbound.



ELEV 142	TDZE 135
----------	----------

MIRL Rwy 16-34  
REIL Rwy 16  
REIL Rws 11 and 29



CATEGORY	A	B	C	D
LPV DA		335-3/4	200 (200-3/4)	
LNAV/VNAV DA		510-3/4	375 (400-3/4)	
LNAV MDA	540-3/4	405 (400-3/4)	540-1	405 (400-1)
CIRCLING	840-1 698 (700-1)	900-1 758 (800-1)	1000-2 1/2 858 (900-2 1/2)	1040-3 898 (900-3)

NW-1, 26 DEC 2024 to 23 JAN 2025

NW-1, 26 DEC 2024 to 23 JAN 2025