

WAAS CH <b>49005</b> <b>W12A</b>	APP CRS <b>123°</b>	Rwy Idg TDZE <b>548</b> Apt Elev <b>549</b>
--	------------------------	---

# RNAV (GPS) RWY 12

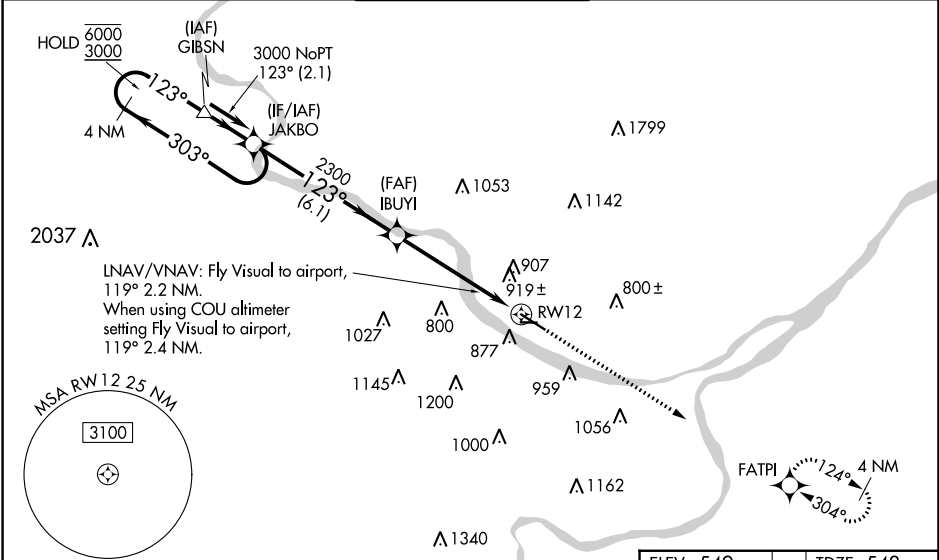
JEFFERSON CITY MEML (JEF)

RNP APCH - GPS.

**⚠** For uncompensated Baro-VNAV systems, LNAV/VNAV NA below -16°C or above 54°C. Rwy 12 helicopter visibility reduction below 3/4 SM NA. Circling Rwy 9 NA at night. When local altimeter setting not received, use COU altimeter setting and increase LPV DA to 1031 feet and all visibilities 1/4 SM. Increase LNAV/VNAV DA to 1364 feet and all visibilities 1/2 SM. Increase all MDAs 80 feet and LNAV visibility Cat B/C/D 1/2 SM, and Circling visibility Cat A/B/C 1/4 SM. Baro-VNAV and VDP NA when using COU altimeter setting.

MISSED APPROACH: Climb to 2800 direct FATPI and hold.

ASOS <b>133.625</b>	MIZZO APP CON <b>124.375 353.925</b>	JEFFERSON CITY TOWER * <b>125.6 (CTAF) 0</b>	GND CON <b>121.7</b>	UNICOM <b>122.95</b>
------------------------	---	---	-------------------------	-------------------------

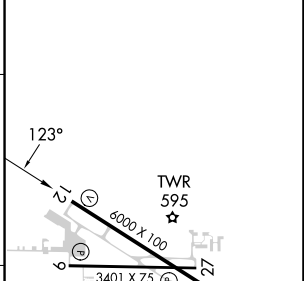
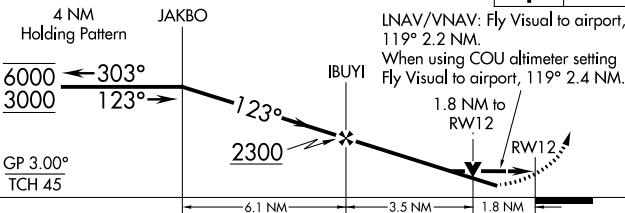


NC-3, 26 DEC 2024 to 23 JAN 2025

NC-3, 26 DEC 2024 to 23 JAN 2025

ELEV 549	TDZE 548
----------	----------

VGSI and RNAV glidepath not coincident (VGSI Angle 3.50/TCH 64).



CATEGORY	A	B	C	D
LPV DA	951-1 1/8 403 (500-1 1/8)			
LNAV/VNAV DA	1284-2 736 (800-2)		1284-2 1/4 736 (800-2 1/4)	
LNAV MDA	1260-1 712 (800-1)		1260-2 712 (800-2)	
<b>C</b> CIRCLING	1280-1 731 (800-1)		1320-2 1/4 771 (800-2 1/4) 1560-3 1011 (1100-3)	

REIL Rwy 9, 12, and 27  
MIRL Rwy 9-27  
HIRL Rwy 12-30