

WAAS CH <b>40228</b> <b>W16A</b>	APP CRS <b>162°</b>	Rwy Idg TDZE Apf Elev	<b>7000</b> <b>4202</b> <b>4252</b>
----------------------------------------	------------------------	-----------------------------	-------------------------------------------

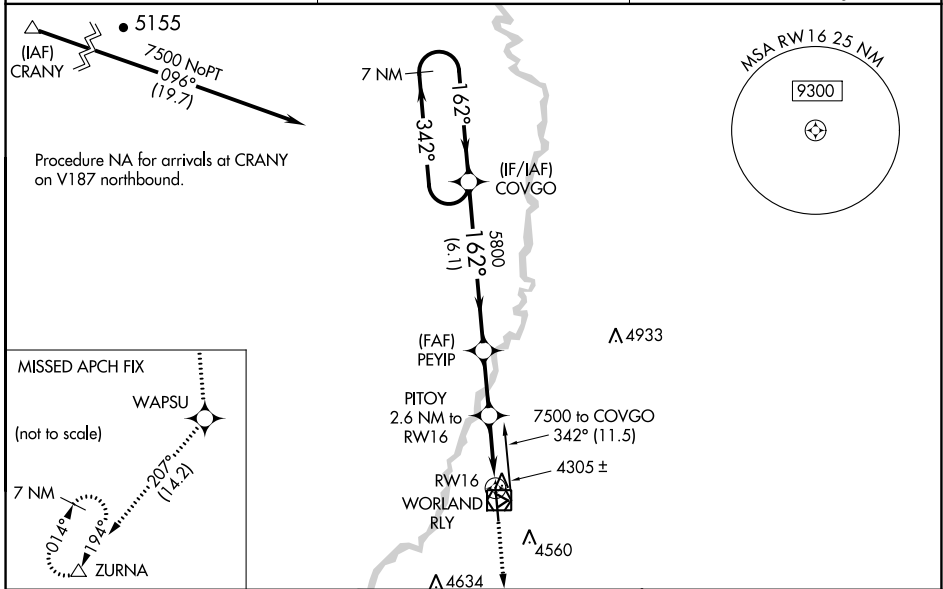
# RNAV (GPS) RWY 16

WORLAND MUNI (WRL)

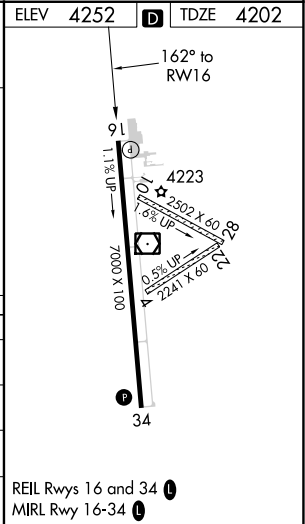
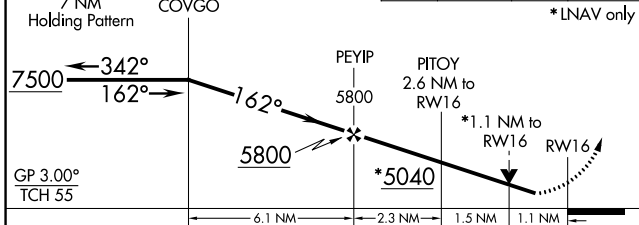
**⚠** For uncompensated Baro-VNAV systems, LNAV/VNAV NA below -32°C (-25°F) or above 17°C (62°F). DME/DME RNP-0.3 NA. VDP and Baro-VNAV NA with Greybull altimeter setting. When local altimeter setting not received, use Greybull altimeter setting: increase LPV DA to 4574 feet, LNAV/VNAV DA to 4616 feet, and all MDA's 140 feet; increase LPV, LNAV/VNAV and LNAV all Cats, and Circling Cat C/D visibilities ½ SM. Helicopter visibility reduction below ¾ SM NA.

**MISSED APPROACH:** Climb to 9600 direct WAPSU and on track 207° to ZURNA and hold, continue climb-in-hold to 9600.

ASOS <b>135.475</b>	SALT LAKE CENTER <b>133.25 285.6</b>	UNICOM <b>123.05 (CTAF) 0</b>
------------------------	-----------------------------------------	----------------------------------



VGSI and RNAV glidepath not coincident (VGSI Angle 3.00/TCH 41).	9600 WAPSU	ZURNA	ELEV 4252	TDZE 4202
------------------------------------------------------------------	------------	-------	-----------	-----------



CATEGORY	A	B	C	D
LPV DA		4452-¾	250 (200-¾)	
LNAV/VNAV DA		4494-⅞	292 (300-⅞)	
LNAV MDA	4560-1	358 (400-1)	4560-1½	358 (400-1½)
CIRCLING	4920-1	668 (700-1)	4920-1¾	5020-2½
			668 (700-1¾)	768 (800-2½)

NW-1, 26 DEC 2024 to 23 JAN 2025

NW-1, 26 DEC 2024 to 23 JAN 2025