

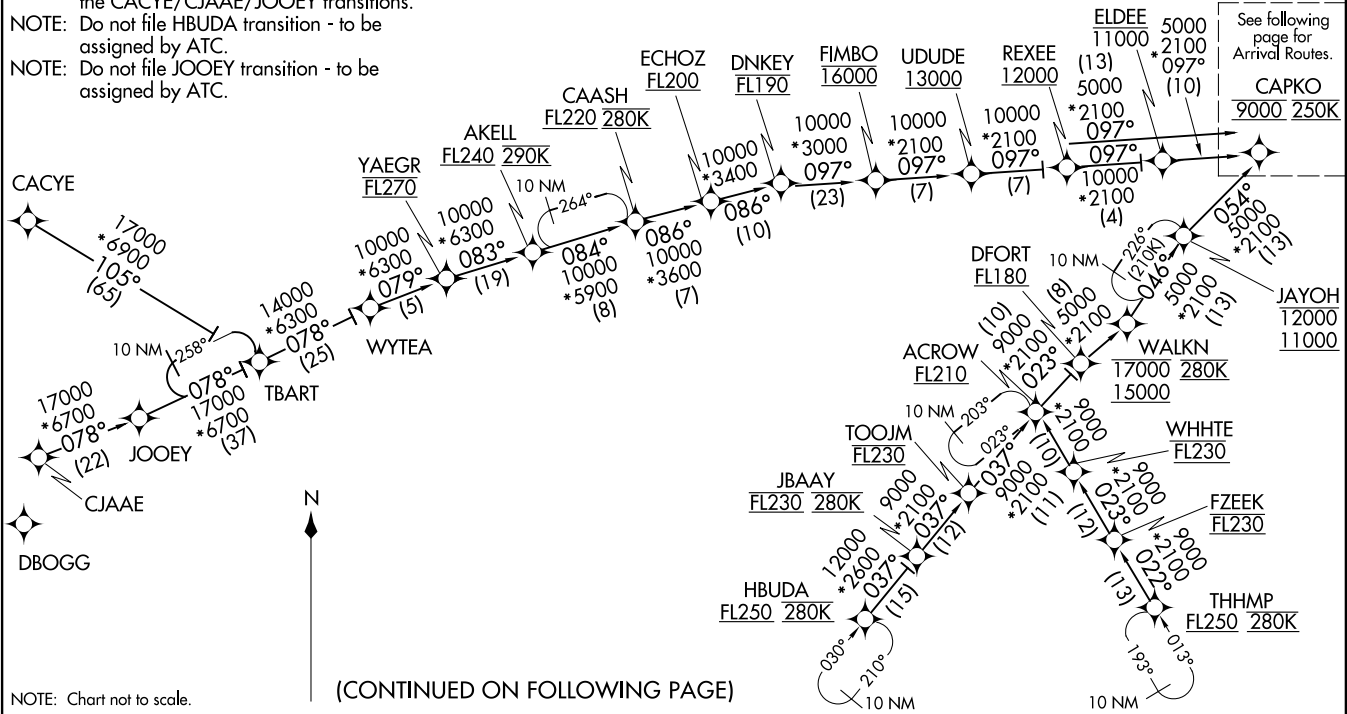
RAVNN SEVEN ARRIVAL (RNAV) Transition Routes
(CAPKO.RAVNN7) 05SEF24

POTOMAC APP CON
128.35 270.275
BWI D-ATIS
115.1 127.8
MTN ATIS 124.925

RNAV 1 - DME/DME/IRU or GPS.
RADAR required.

CACYE TRANSITION (CACYE.RAVNN7)
CJAAE TRANSITION (CJAAE.RAVNN7)
HBUDA TRANSITION (HBUDA.RAVNN7): (ATC assigned only).
JOOEY TRANSITION (JOOEY.RAVNN7): (ATC assigned only).
THHMP TRANSITION (THHMP.RAVNN7)

- NOTE: Jet aircraft only.
- NOTE: All part 91, 101, 103, 105, 125, 133, 135, and 137 flight operations are prohibited on the CACYE/CJAAE/JOOEY transitions.
- NOTE: Do not file HBUDA transition - to be assigned by ATC.
- NOTE: Do not file JOOEY transition - to be assigned by ATC.



NOTE: Chart not to scale.

(CONTINUED ON FOLLOWING PAGE)

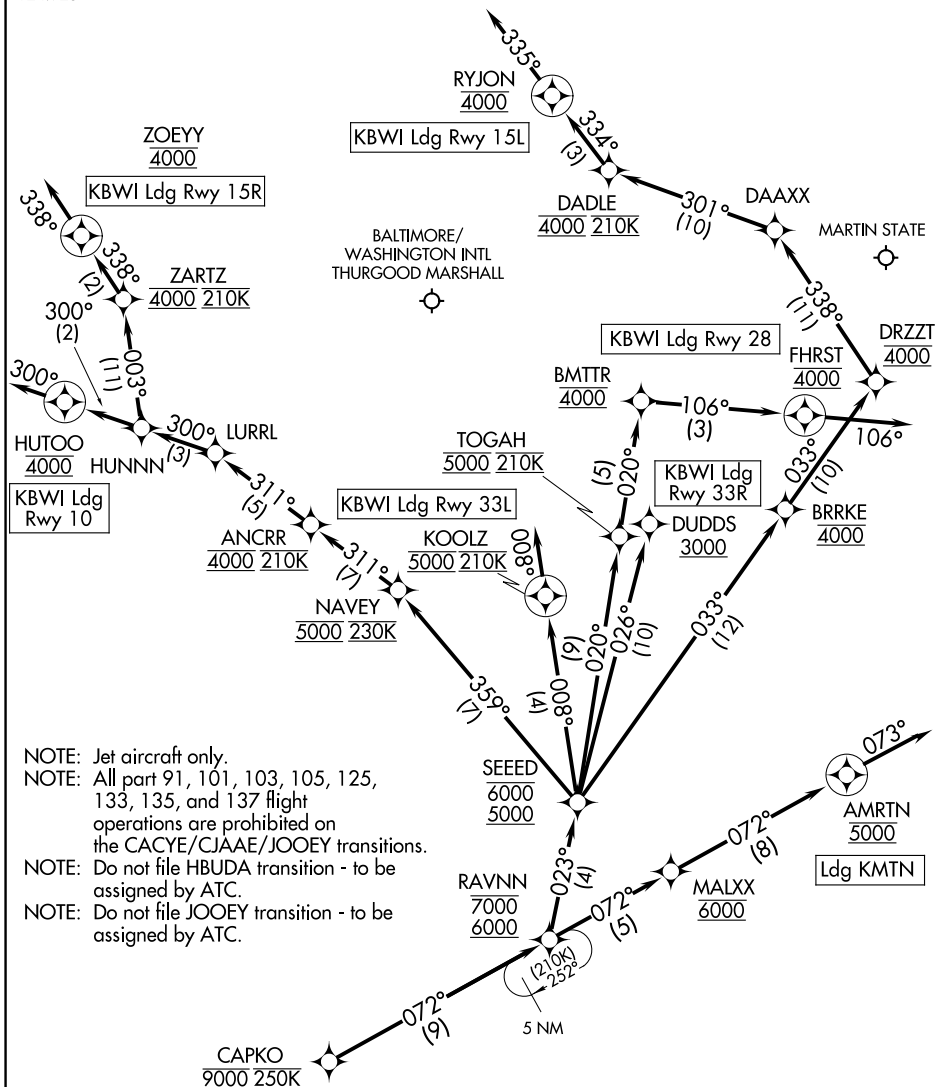
RAVNN SEVEN ARRIVAL (RNAV) Transition Routes
(CAPKO.RAVNN7) 24249
AL-804 (FAA)
BALTIMORE, MARYLAND

RAVNN SEVEN ARRIVAL (RNAV) Arrival Routes

BALTIMORE, MARYLAND

POTOMAC APP CON
 128.35 270.275
 BWI D-ATIS
 115.1 127.8
 MTN ATIS
 124.925

RNAV 1 - DME/DME/IRU or GPS.
 RADAR required.



NE-3, 26 DEC 2024 to 23 JAN 2025

NE-3, 26 DEC 2024 to 23 JAN 2025

- NOTE: Jet aircraft only.
- NOTE: All part 91, 101, 103, 105, 125, 133, 135, and 137 flight operations are prohibited on the CACYE/CJAAE/JOOEY transitions.
- NOTE: Do not file HBUDA transition - to be assigned by ATC.
- NOTE: Do not file JOOEY transition - to be assigned by ATC.

NOTE: Chart not to scale.

(CONTINUED ON FOLLOWING PAGE)

ARRIVAL ROUTE DESCRIPTION

KBWI: From CAPKO on track 072° to cross RAVNN between 6000 and 7000.

LANDING KBWI RUNWAY 10: From RAVNN on track 023° to cross SEED between 5000 and 6000, then on track 359° to cross NAVAY at 5000 and at 230K, then on track 311° to cross ANCR at 4000 and at 210K, then on track 311° to LURRL, then on track 300° to HUNNN, then on track 300° to cross HUTOO at 4000, then on track 300°. Expect RADAR vectors to final approach course.

LANDING KBWI RUNWAY 15L: From RAVNN on track 023° to cross SEED between 5000 and 6000, then on track 033° to cross BRRKE at 4000, then on track 033° to cross DRZZT at 4000, then on track 338° to DAAX, then on track 301° to cross DADLE at 4000 and at 210K, then on track 334° to cross RYJON at 4000, then on track 335°. Expect RADAR vectors to final approach course.

LANDING KBWI RUNWAY 15R: From RAVNN on track 023° to cross SEED between 5000 and 6000, then on track 359° to cross NAVAY at 5000 and at 230K, then on track 311° to cross ANCR at 4000 and at 210K, then on track 311° to LURRL, then on track 300° to HUNNN, then on track 003° to cross ZARTZ at 4000 and at 210K, then on track 338° to cross ZOEYY at 4000, then on track 338°. Expect RADAR vectors to final approach course.

LANDING KBWI RUNWAY 28: From RAVNN on track 023° to cross SEED between 5000 and 6000, then on track 020° to cross TOGAH at 5000 and at 210K, then on track 020° to cross BMTTR at 4000, then on track 106° to cross FHRST at 4000, then on track 106°. Expect RADAR vectors to final approach course.

LANDING KBWI RUNWAY 33L: From RAVNN on track 023° to cross SEED between 5000 and 6000, then on track 008° to cross KOOLZ at 5000 and at 210K, then on track 008°. Expect RADAR vectors to final approach course.

LANDING KBWI RUNWAY 33R: From RAVNN on track 023° to cross SEED between 5000 and 6000, then on track 026° to cross DUDDS at or above 3000. Expect ILS or LOC Rwy 33R approach.

LANDING KMTN: From CAPKO on track 072° to cross RAVNN between 6000 and 7000, then on track 072° to cross MALXX at 6000, then on track 072° to cross AMRTN at 5000, then on heading 073°. Expect RADAR vectors to final approach course.

NE-3, 26 DEC 2024 to 23 JAN 2025

NE-3, 26 DEC 2024 to 23 JAN 2025