

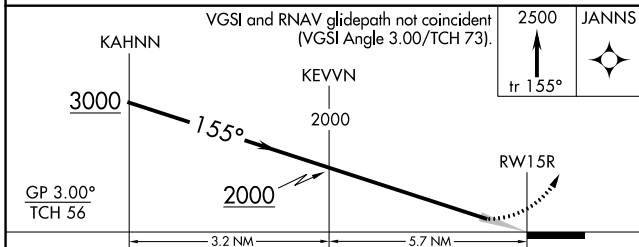
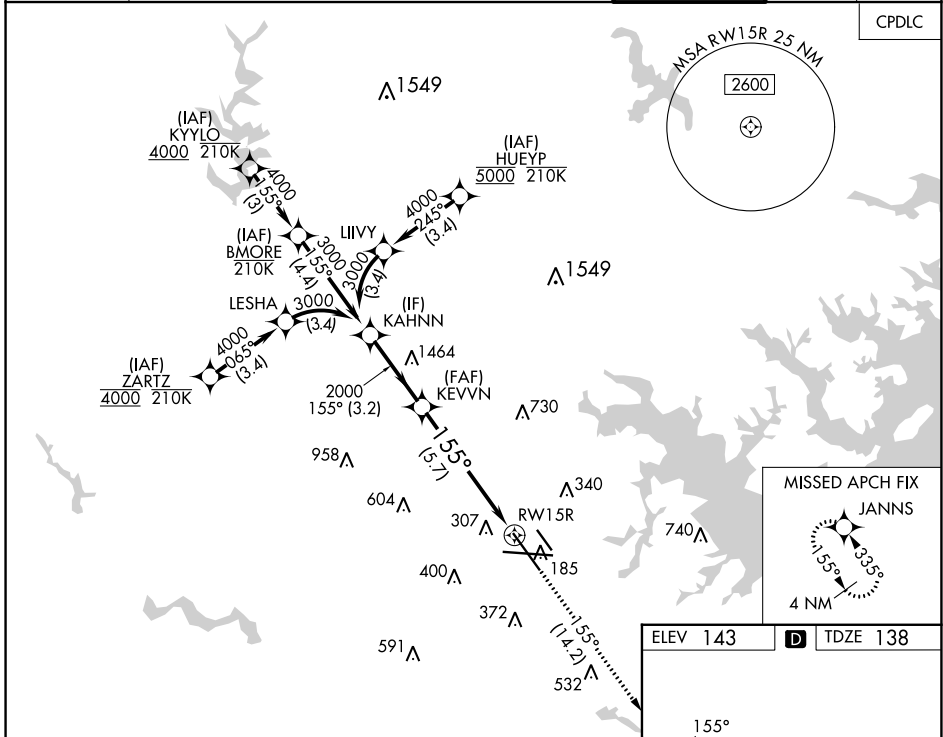
APP CRS	Rwy Idg	8301
155°	TDZE	138
	Apt Elev	143

RNAV (RNP) Z RWY 15R

BALTIMORE/WASHINGTON INTL THURGOOD MARSHALL (BWI)

RNP AR APCH - GPS.	MALSR	MISSED APPROACH: Climb to 2500 on track 155° to JANNIS and hold.
<p>▼ For uncompensated Baro-VNAV systems, procedure NA below -11°C or above 54°C. Simultaneous approach authorized with Rwy 15L.</p> <p>For inop ALS, increase RNP 0.11 DA all Cats visibility to RVR 5500.</p>		

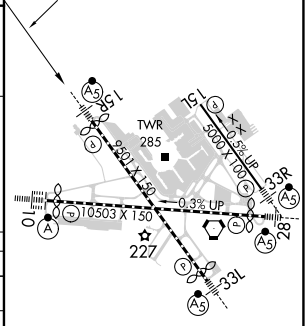
D-ATIS	POTOMAC APP CON	BALTIMORE TOWER	GND CON	CLNC DEL
115.1 127.8	119.0 282.275 (020°-100°) 119.7 290.475 (131°-180°)	119.4 257.8	121.9	118.05
	124.55 317.425 (101°-130°) 128.7 307.9 (181°-019°)			



ELEV 143	D	TDZE 138
----------	----------	----------

CATEGORY	A	B	C	D
RNP 0.11 DA		513/35	375 (400-5%)	
RNP 0.30 DA		587/45	449 (500-7%)	

AUTHORIZATION REQUIRED



TDZ/CL Rwy's 10 and 33L
REIL Rwy's 15L and 33R
HIRL all Rwy's

NE-3, 26 DEC 2024 to 23 JAN 2025

NE-3, 26 DEC 2024 to 23 JAN 2025