


# RNAV (RNP) Z RWY 33L

BALTIMORE/WASHINGTON INTL THURGOOD MARSHALL (BWI)

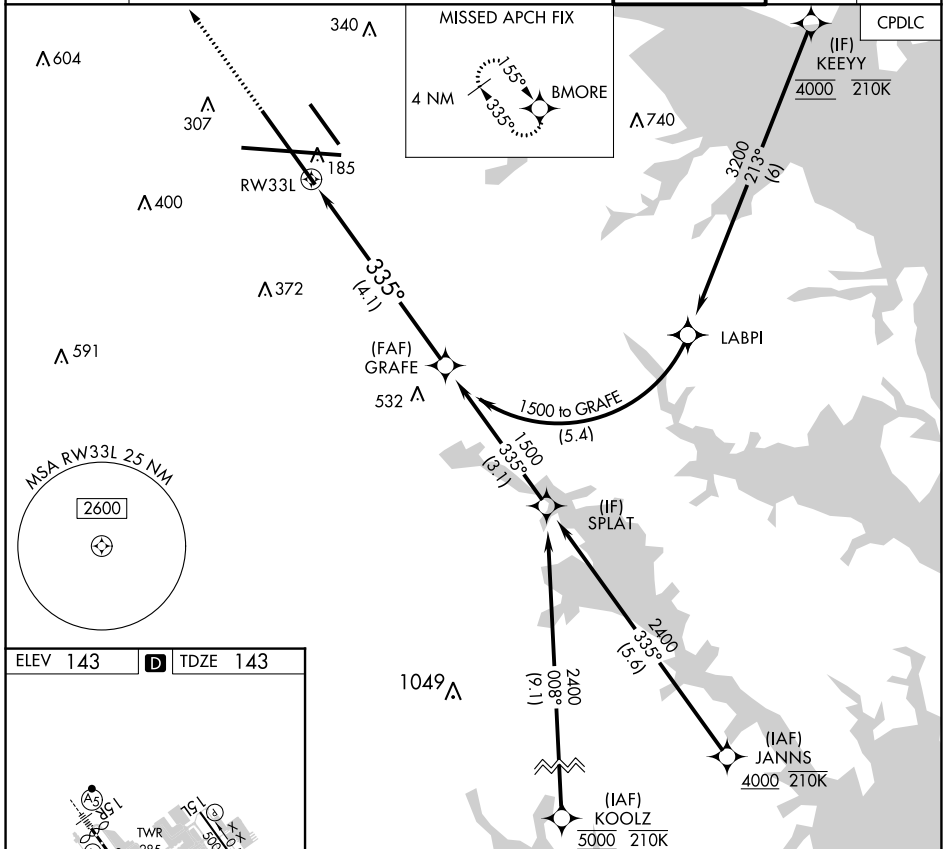
APP CRS	Rwy Idg	<b>8301</b>
<b>335°</b>	TDZE	<b>143</b>
	Apt Elev	<b>143</b>

RNP APCH - GPS. From KEYEY: RF.

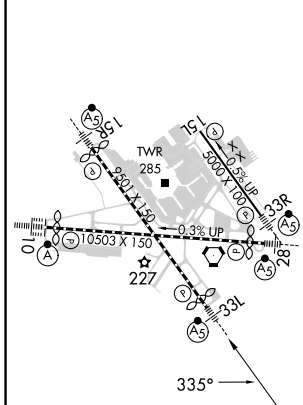
▼ For uncompensated Baro-VNAV systems, procedure NA below -11°C or above 54°C. For inop ALS, increase RNP 0.30 all Cats visibility to RVR 5500.

MALSR  MISSED APPROACH: Climb to 3000 direct BMORE and hold.



D-ATIS	POTOMAC APP CON	BALTIMORE TOWER	GND CON	CLNC DEL
<b>115.1 127.8</b>	(020°-100°) <b>119.0 282.275</b> (101°-130°) <b>124.55 317.425</b>	<b>119.4 257.8</b>	<b>121.9</b>	<b>118.05</b>
	(131°-180°) <b>119.7 290.475</b> (181°-019°) <b>128.7 307.9</b>			



ELEV 143	<b>D</b>	TDZE 143
----------	----------	----------



TDZ/CL Rwy 10 and 33L  
REIL Rwy 15L and 33R  
HIRL all Rwy

3000	BMORE	See planview for multiple IF locations. VGSI and RNAV glidepath not coincident (VGSI Angle 3.00/TCH 72).	GRAFE 1500
			
RW33L		335°	1500
		GP 3.00°	TCH 55
		4.1 NM	
CATEGORY	A	B	C
RNP 0.30 DA	496/30 353 (400-5%)		D

## AUTHORIZATION REQUIRED

# RNAV (RNP) Z RWY 33L

NE-3, 26 DEC 2024 to 23 JAN 2025

NE-3, 26 DEC 2024 to 23 JAN 2025