

WAAS CH 50144 W02A	APP CRS 018°	Rwy Idg TDZE 152 Apt Elev 163	4502
----------------------------------------	------------------------	---------------------------------------------------	-------------

RNAV (GPS) RWY 2

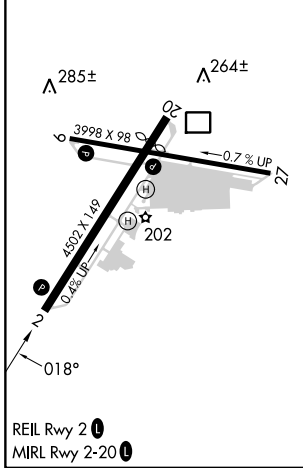
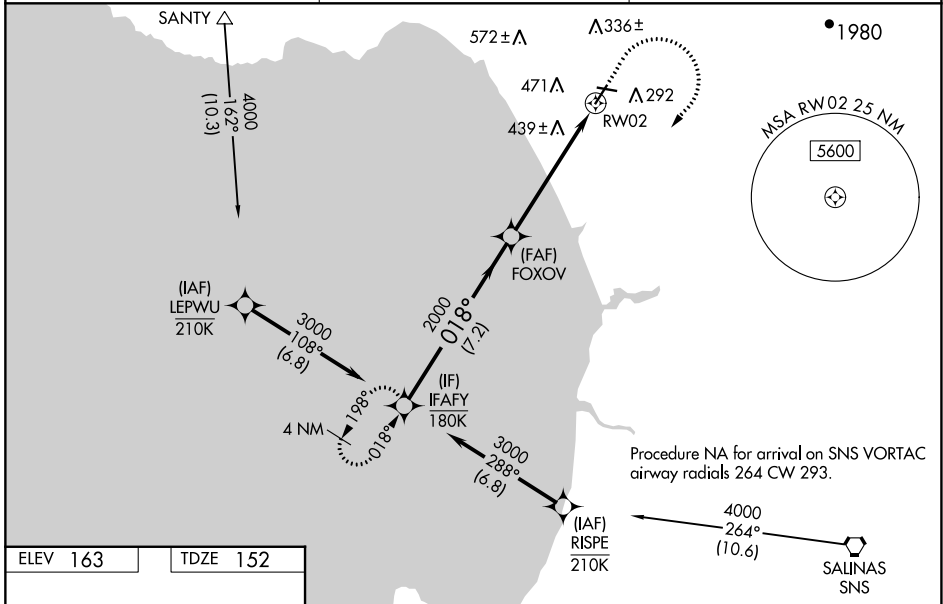
WATSONVILLE MUNI (WVI)

RNP APCH - GPS.

⚠ Rwy 2 helicopter visibility reduction below ¼ SM NA. Circling Rwy 9, 27 NA at night. For uncompensated Baro-VNAV systems, LNAV/VNAV NA below 0°C or above 54°C. Circling NA west of Rwy 2-20. When local altimeter setting not received, use Monterey altimeter setting and increase LPV DA to 510 feet and all visibilities ¼ SM. Increase LNAV/VNAV DA to 834 feet and all visibilities ¼ SM. Increase all MDAs 80 feet and LNAV visibility Cat C/D ¼ SM, and Circling visibility Cat C ¼ SM. Baro-VNAV and VDP NA when using Monterey altimeter setting.

MISSED APPROACH: (Do not exceed 200K until IFAFY) Climb to 740 then climbing right turn to 3000 direct IFAFY and hold, continue climb-in-hold to 3000.

ASOS 132.275	NORCAL APP CON 127.15 307.125	UNICOM 122.8 (CTAF) 0
------------------------	-----------------------------------------	---------------------------------



VGSI and RNAV glidepath not coincident (VGSI Angle 3.00/TCH 43).

IFAFY	FOXOV	740	3000	IFAFY
3000	2000	↑	↷	✦
GP 3.00°			1.6 NM to RW02	
TCH 56				
	7.2 NM	4.1 NM	1.6 NM	
CATEGORY	A	B	C	D
LPV DA	448-7/8 296 (300-7/8)			
LNAV/VNAV DA	772-13/4 620 (700-13/4)			
LNAV MDA	700-1 548 (600-1)	700-15/8 548 (600-15/8)		
CIRCLING	700-1 537 (600-1)	700-15/8 537 (600-15/8)	1160-3 997 (1000-3)	

SW-2, 26 DEC 2024 to 23 JAN 2025

SW-2, 26 DEC 2024 to 23 JAN 2025