

VORTAC GGG 112.9 Chan 76	APP CRS 306°	Rwy Idg TDZE Apt Elev	9200 354 366
----------------------------------------------	------------------------	-----------------------------	-----------------------------------------

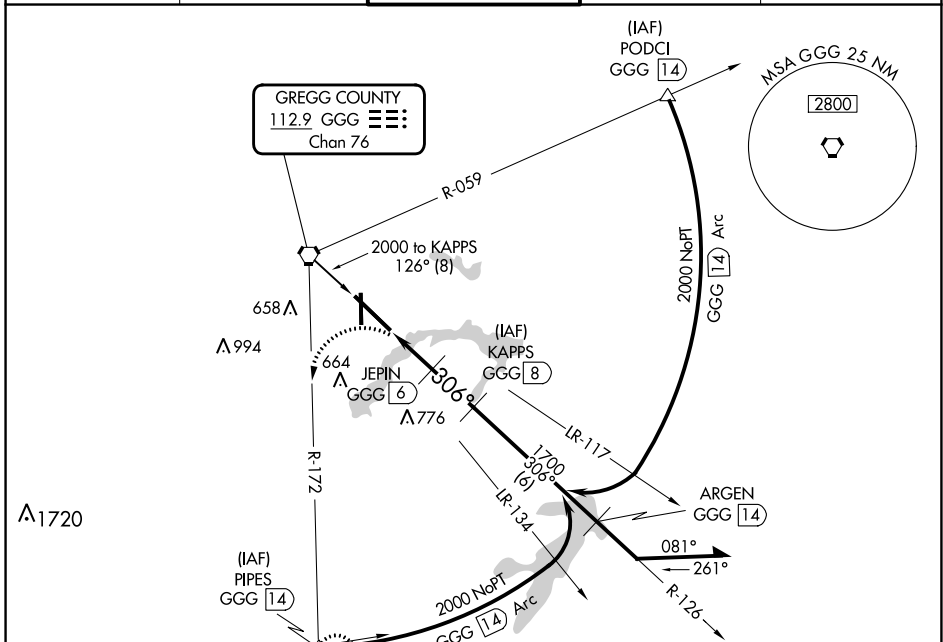
VOR/DME or TACAN RWY 31

EAST TEXAS RGNL (GGG)

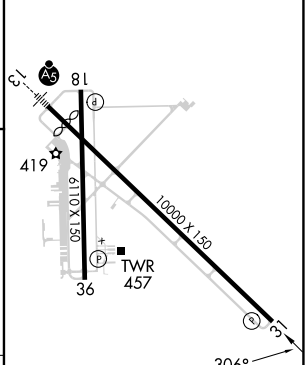
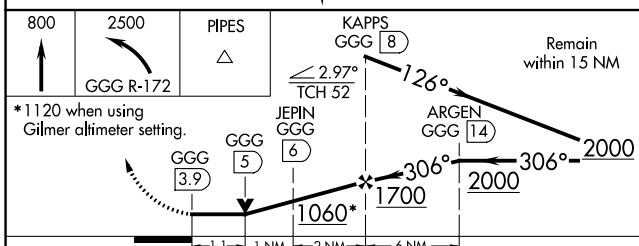
⚠ When local altimeter setting not received, use Gilmer altimeter setting and increase all MDA 60 feet and increase S-31 Cats C/D/E and Circling Cats C/D/E visibility ½ SM. VDP NA when using Gilmer altimeter setting.

⚠ MISSED APPROACH: Climb to 800, then climbing left turn to 2500 via GGG R-172 to PIPES INT and hold.

ATIS 119.65	LONGVIEW APP CON* 124.675 257.975	EASTEX TOWER* 119.2 (CTAF) 377.05	GND CON 121.6	UNICOM 122.95
-----------------------	---------------------------------------------	---------------------------------------------	-------------------------	-------------------------



ELEV 366	D	TDZE 354
----------	----------	----------



CATEGORY	A	B	C	D	E
S-31	780-1 426 (500-1)		780-1¼ 426 (500-1¼)		
CIRCLING	860-1 494 (500-1)		980-1¾ 614 (700-1¾)	1080-2¼ 714 (800-2¼)	1080-2½ 714 (800-2½)

HIRL Rwy 13-31 **⓪**
MIRL Rwy 18-36

SC-2, 26 DEC 2024 to 23 JAN 2025

SC-2, 26 DEC 2024 to 23 JAN 2025