

WAAS CH <b>78225</b> <b>W35A</b>	APP CRS <b>346°</b>	Rwy Idg TDZE <b>2355</b> Apt Elev <b>2380</b>	<b>5840</b>
--	------------------------	---	-------------

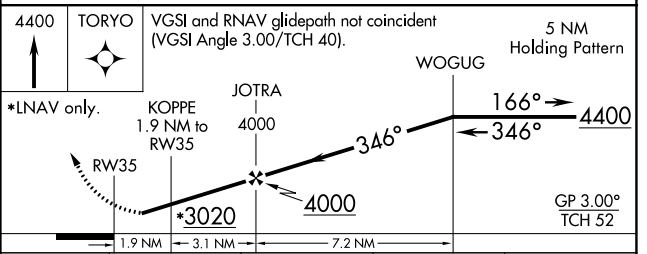
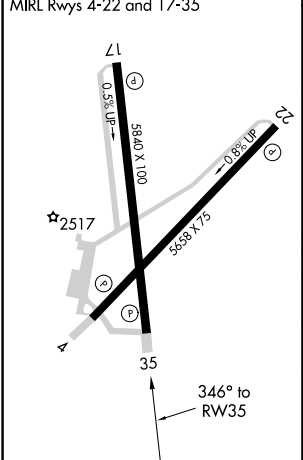
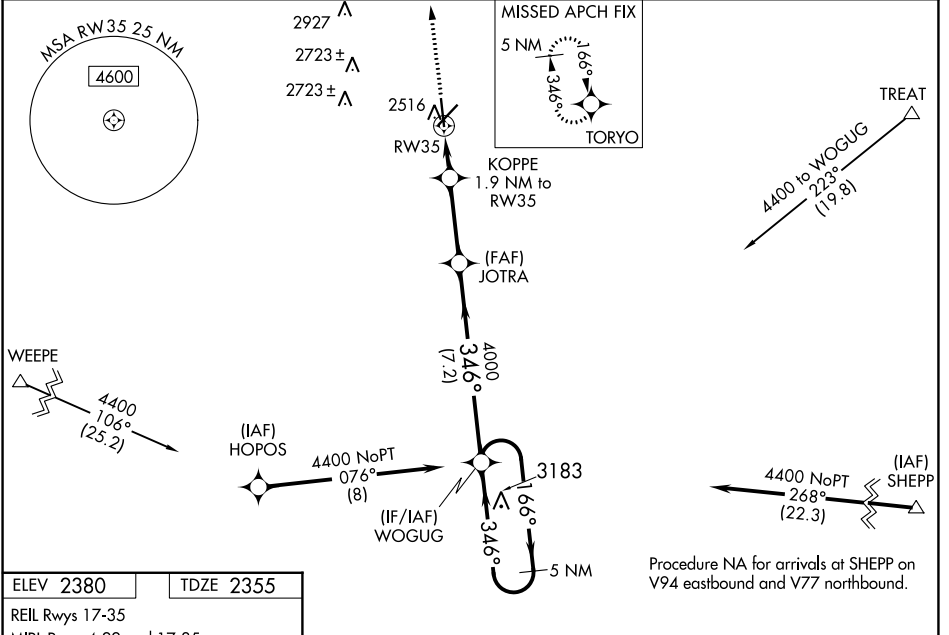
# RNAV (GPS) RWY 35

AVENGER FLD (SWW)

**⚠** When VGSI inop, Circling Rwy 17 and 22 NA at night. Baro-VNAV NA when using Snyder altimeter setting. For uncompensated Baro-VNAV systems, LNAV/VNAV NA below -19°C (-2°F) or above 29°C (84°F). When VGSI inop, Straight-in/Circling Rwy 35 NA at night. DME/DME RNP-0.3 NA. Visibility reduction by helicopters NA. When local altimeter setting not received, use Snyder altimeter setting and increase LPV DA to 2677 feet, LNAV/VNAV DA to 2785 feet, and all MDAs 80 feet; increase LNAV/VNAV visibility all Cats ¼ SM, LNAV visibility Cats C and D ½ SM, and Circling Cat C and D visibility ¼ SM.

**MISSED APPROACH:**  
Climb to 4400 direct TORYO and hold.

AWOS-3 <b>119.025</b>	ABILENE APP CON <b>127.2 282.3</b>	UNICOM <b>122.8</b> (CTAF)
--------------------------	---------------------------------------	-------------------------------



CATEGORY	A	B	C	D
LPV DA		2605-1	250 (300-1)	
LNAV/VNAV DA		2713-1½	358 (400-1½)	
LNAV MDA	2820-1	465 (500-1)	2820-1¾	465 (500-1¾)
CIRCLING	2880-1	500 (500-1)	3080-2 700 (700-2)	3080-2¼ 700 (700-2¼)

SC-2, 26 DEC 2024 to 23 JAN 2025

SC-2, 26 DEC 2024 to 23 JAN 2025