

RNAV (GPS) RWY 10

LAKE CITY GATEWAY (LCQ)

APP CRS	Rwy Idg	8003
100°	TDZE	201
	Apt Elev	201

RNP APCH-GPS.

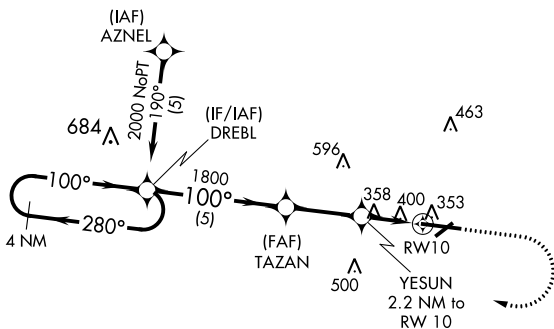
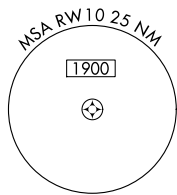
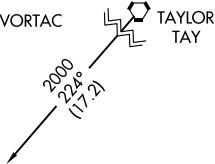
▼ When local altimeter setting not received, use Gainesville altimeter setting: Increase all MDAs 100 feet; increase LNAV Cat C/D visibility 3/8 SM and Circling Cat C visibility 1/2 SM and Cat D 1/4 SM. Procedure NA at night. Rwy 10 helicopter visibility reduction below 1 SM NA.

▲

MISSED APPROACH: Climb to 800 then climbing right turn to 2000 direct DREBL and hold.

AWOS-3 120,675	JACKSONVILLE CENTER 125,375 254,325	LAKE CITY TOWER ★ 119.2 (CTAF) 0 314.6	GND CON 121.9	UNICOM 122.95
--------------------------	---	--	-------------------------	-------------------------

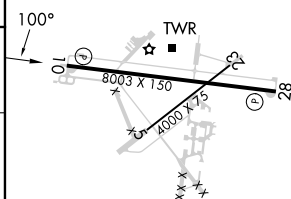
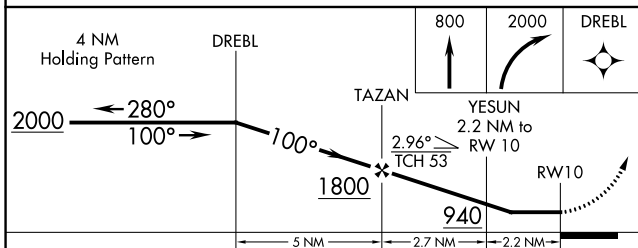
Procedure NA for arrivals on TAY VORTAC
airway radials 173 CW 276.



SE-3, 26 DEC 2024 to 23 JAN 2025

SE-3, 26 DEC 2024 to 23 JAN 2025

ELEV 201	TDZE 201
----------	----------



CATEGORY	A	B	C	D
LNAV MDA	700-1	499 (500-1)	700-1 3/8	499 (500-1 3/8)
CIRCLING	760-1	559 (600-1)	780-1 1/2 579 (600-1 1/2)	960-2 1/2 759 (800-2 1/2)

REIL Rwy 10 and 28 0
MIRL Rwy 5-23 and 10-28 0