

24249

# AIRPORT DIAGRAM

AL-827 (FAA)

VALLEY INTL (H.R.L.)  
HARLINGEN, TEXAS

ATIS  
124.85  
HARLINGEN TOWER ★  
119.3 (CTAF) 317.6  
GND CON  
121.7

FIELD  
ELEV  
36

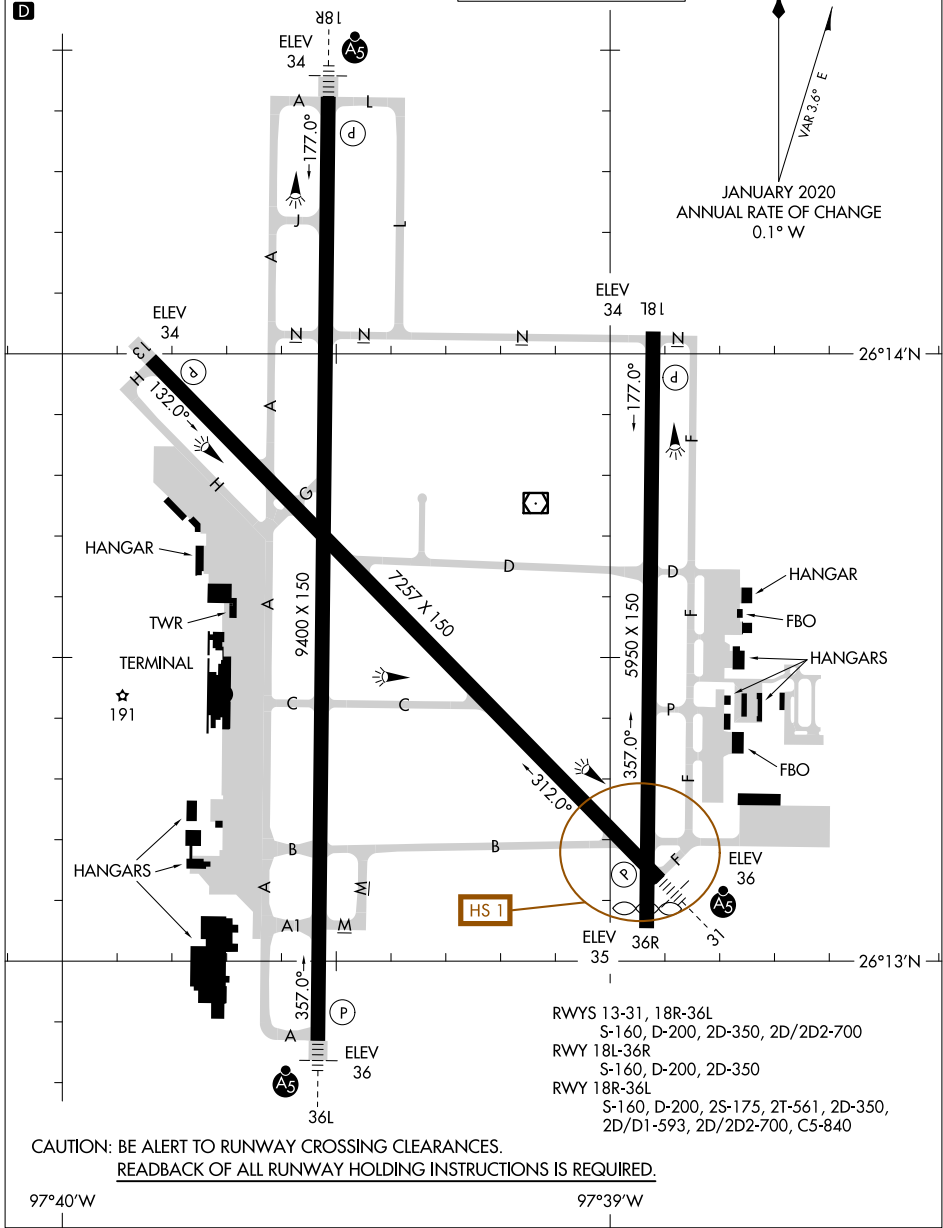
HIRL Rwy 18R-36L and 13-31  
MIRL Rwy 18L-36R  
REIL Rwy 18L and 13



JANUARY 2020  
ANNUAL RATE OF CHANGE  
0.1° W

SC-3, 26 DEC 2024 to 23 JAN 2025

SC-3, 26 DEC 2024 to 23 JAN 2025



RWYS 13-31, 18R-36L  
S-160, D-200, 2D-350, 2D/2D2-700

RWY 18L-36R  
S-160, D-200, 2D-350

RWY 18R-36L  
S-160, D-200, 2S-175, 2T-561, 2D-350,  
2D/D1-593, 2D/2D2-700, C5-840

CAUTION: BE ALERT TO RUNWAY CROSSING CLEARANCES.  
READBACK OF ALL RUNWAY HOLDING INSTRUCTIONS IS REQUIRED.

97°40'W

97°39'W

# AIRPORT DIAGRAM

24249

HARLINGEN, TEXAS  
VALLEY INTL (H.R.L.)