

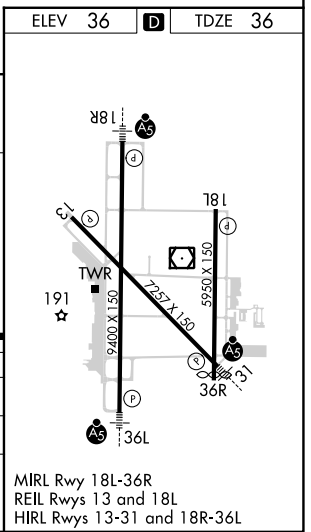
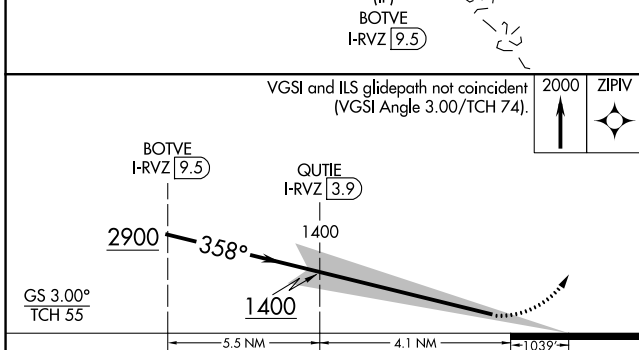
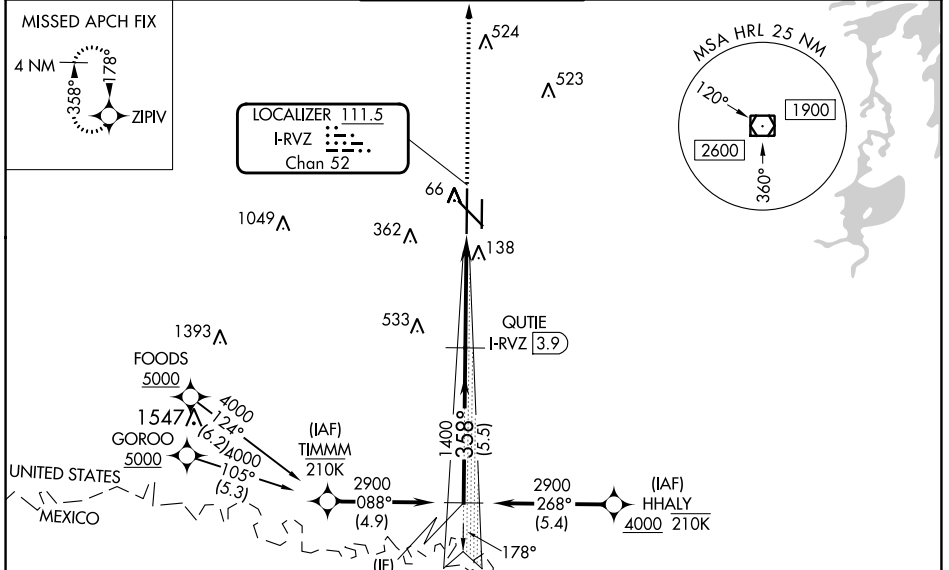
LOC/DME I-RVZ 111.5 Chan 52	APP CRS 358°	Rwy Idg 9400 TDZE 36 Apt Elev 36
---	------------------------	---

ILS RWY 36L (SA CAT I & II)

VALLEY INTL (HRL)

RNP APCH-GPS.	MALSR	MISSED APPROACH: Climb to 2000 direct ZIPIV and hold.
DME required.		
SA CAT I/II: Requires specific OPSPEC, MSPEC, or LOA approval.		

ATIS 124.85	VALLEY APP CON 120.7 279.5	HARLINGEN TOWER ★ 119.3 (CTAF) 317.6	GND CON 121.7	UNICOM 122.95
-----------------------	--------------------------------------	--	-------------------------	-------------------------



CATEGORY	A	B	C	D
S-ILS 36L	SA CAT I RA 150/14 150 DA 186			
S-ILS 36L	SA CAT II RA 100/12 100 DA 136			

SA CATEGORY I & II ILS - SPECIAL AIRCREW & AIRCRAFT CERTIFICATION REQUIRED

MIRL Rwy 18L-36R
REIL Rwy 13 and 18L
HIRL Rwy 13-31 and 18R-36L

SC-3, 26 DEC 2024 to 23 JAN 2025

SC-3, 26 DEC 2024 to 23 JAN 2025