

WAAS CH 78230 W13A	APP CRS 133°	Rwy Idg TDZE Apt Elev	7257 35 36
--	------------------------	-----------------------------	---------------------------------------

RNAV (GPS) Y RWY 13

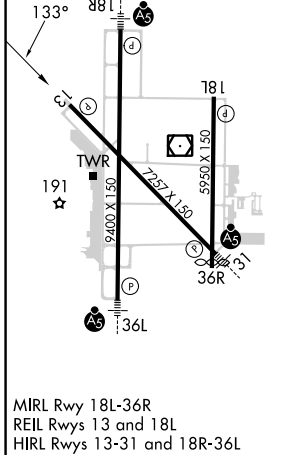
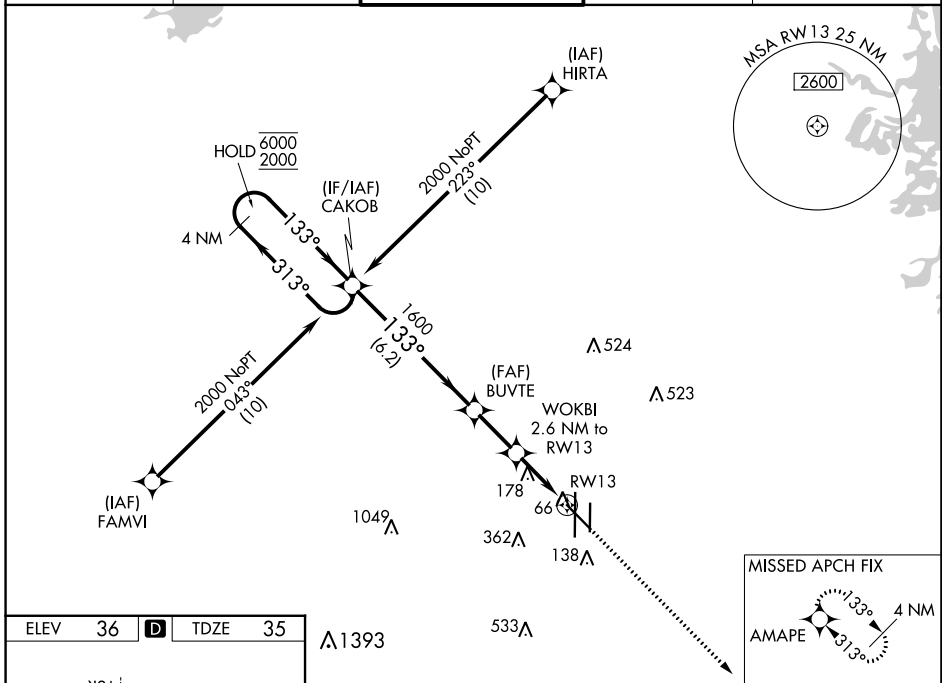
VALLEY INTL (HRL)

RNP APCH - GPS.

⚠ Baro-VNAV and VDP NA when using Port Isabel altimeter setting. For uncompensated Baro-VNAV systems, LNAV/VNAV NA below -1°C or above 54°C. When local altimeter setting not received, use Port Isabel altimeter setting: increase LPV DA to 327 feet and all visibilities ½ SM; increase LNAV/VNAV DA to 327 feet and all visibilities ½ SM; increase all MDAs 60 feet and visibility Cats C and D ¼ SM.

MISSED APPROACH:
Climb to 2000 direct AMAPE and hold.

ATIS 124.85	VALLEY APP CON 120.7 279.5	HARLINGEN TOWER ★ 119.3 (CTAF) 0 317.6	GND CON 121.7	UNICOM 122.95
-----------------------	--------------------------------------	--	-------------------------	-------------------------



4 NM Holding Pattern	CAKOB	2000	AMAPE
6000 2000	← 313° 133° →	1600	920
GP 3.00° TCH 59	6.2 NM	2.1 NM	1.5 NM
1.1 NM to RW13	1.1		
WOKBI 2.6 NM to RW13			
BUVTE			
133°			
313°			
4 NM			
MISSED APCH FIX			
133°			
313°			
4 NM			

CATEGORY	A	B	C	D
LPV DA		285-¾	250 (300-¾)	
LNAV/VNAV DA		285-¾	250 (300-¾)	
LNAV MDA	440-1	405 (500-1)	440-1½	405 (500-1½)
C CIRCLING	460-1 424 (500-1)	560-1 524 (600-1)	600-1½ 564 (600-1½)	680-2 644 (700-2)

SC-3, 26 DEC 2024 to 23 JAN 2025

SC-3, 26 DEC 2024 to 23 JAN 2025