

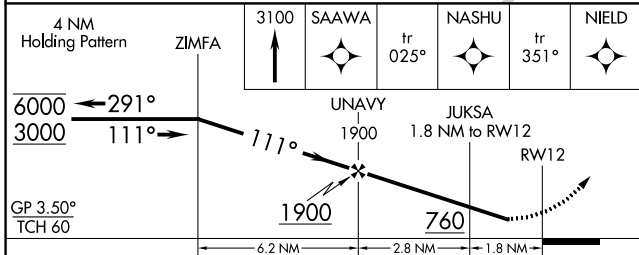
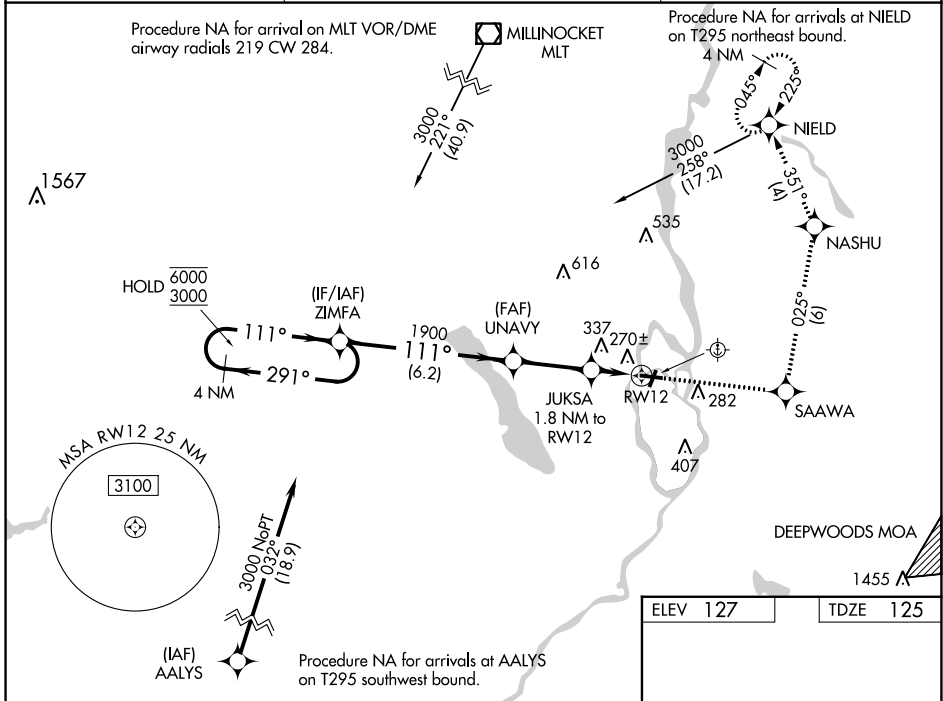
WAAS CH 42647 W12A	APP CRS 111°	Rwy ldg TDZE Apt Elev	4001 125 127
---------------------------------	------------------------	-----------------------------	---

RNAV (GPS) RWY 12

DEWITT FLD/OLD TOWN MUNI (OLD)

RNP APCH - GPS.	<p>⚠ Rwy 12 helicopter visibility reduction below 3/4 SM NA. Circling NA to Rwy 17W and 35W. Circling Rwy 4 NA at night. Use BGR altimeter setting; when not received, use BHB altimeter setting and increase LPV DA to 497 feet; increase all MDAs 60 feet and LNAV visibility Cat C 1/2 SM, and Circling visibility Cat C 1/2 SM.</p>	<p>MISSED APPROACH: Climb to 3100 direct SAAWA and on track 025° to NASHU and on track 351° to NIELD and hold, continue climb-in-hold to 3100.</p>
-----------------	--	--

BGR ASOS 127.75	BANGOR APP CON 118.925 239.3	UNICOM 122.8 (CTAF)
---------------------------	--	-------------------------------



ELEV 127	TDZE 125
----------	----------

REIL Rwy 4

MIRL Rwy 4-22 and 12-30

NE-1, 26 DEC 2024 to 23 JAN 2025

NE-1, 26 DEC 2024 to 23 JAN 2025