

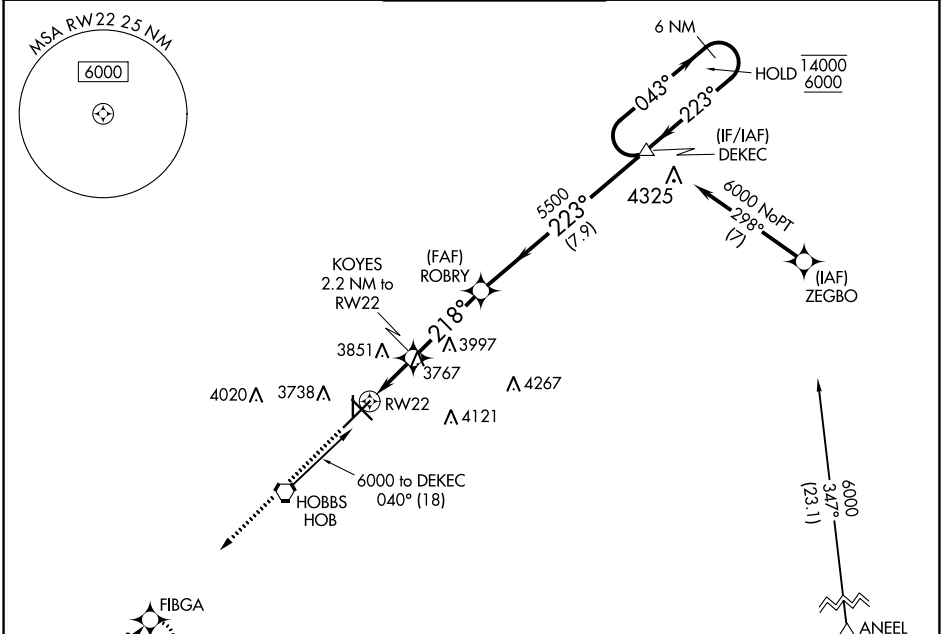
WAAS CH 82735 W22A	APP CRS 218°	Rwy Idg TDZE Apt Elev	8000 3649 3661
--	------------------------	-----------------------------	---

RNAV (GPS) RWY 22

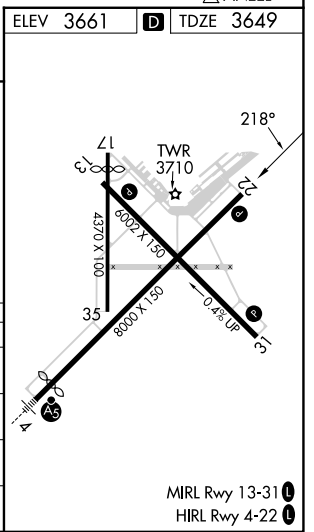
LEA COUNTY RGNL (HOB)

RNP APCH - GPS.		MISSED APPROACH: Climb to 5600 direct FIBGA and hold.	
<p>⚠ Circling Rwy 17, 35 NA at night. For uncompensated Baro-VNAV systems, LNAV/VNAV NA below -12°C or above 54°C.</p>			

ATIS 119.75	FORT WORTH CENTER 133.1 298.95	HOBBS TOWER ★ 120.65 (CTAF) 317.4	GND CON 121.9	UNICOM 122.95
-----------------------	--	---	-------------------------	-------------------------



ELEV 3661	D	TDZE 3649		
5600	FIBGA			
KOYES 2.2 NM to RW22	ROBRY 5500	DEKEC 6 NM Holding Pattern		
1 NM to RW22	218°	223°		
4400	5500	14000 6000		
GP 3.00°		TCH 44		
1 NM	1.2 NM	3.5 NM		
7.9 NM				
CATEGORY	A	B	C	D
LPV DA		3899-3/4	250 (300-3/4)	
LNAV/VNAV DA		3899-3/4	250 (300-3/4)	
LNAV MDA		4020-1	371 (400-1)	
CIRCLING	4120-1 459 (500-1)	4160-1 499 (500-1)	4440-2 1/4 779 (800-2 1/4)	4440-2 1/2 779 (800-2 1/2)



SW-1, 26 DEC 2024 to 23 JAN 2025

SW-1, 26 DEC 2024 to 23 JAN 2025