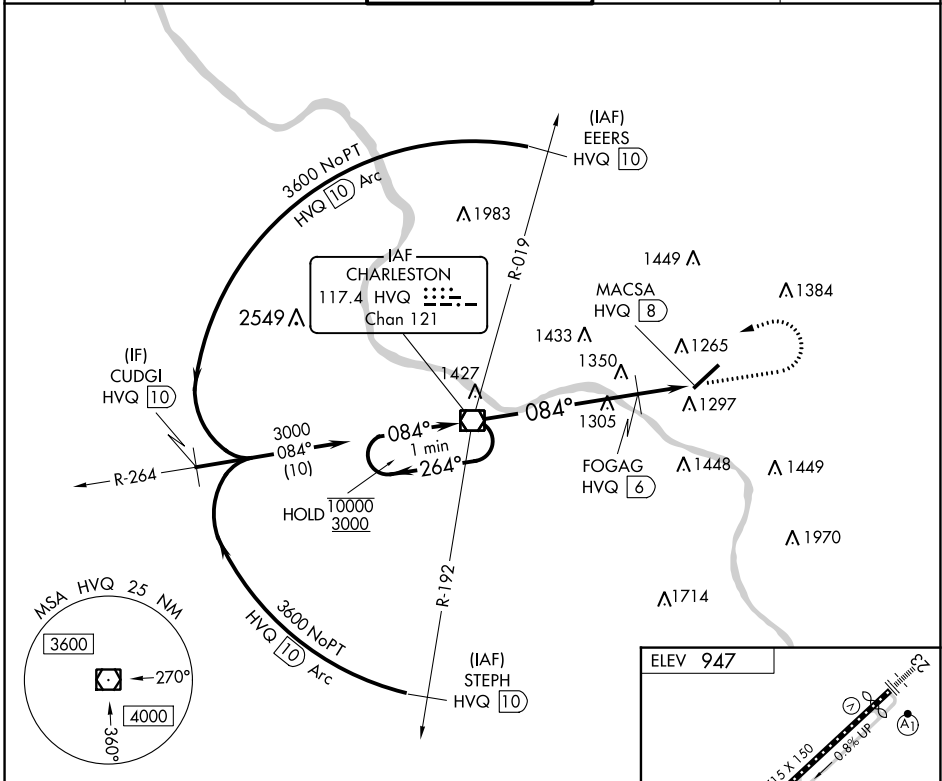


VOR/DME HVQ <b>117.4</b> Chan <b>121</b>	APP CRS <b>084°</b>	Rwy Idg TDZE Apt Elev <b>947</b>	<b>N/A</b> <b>N/A</b> <b>947</b>
--	------------------------	---	--

**VOR-A**  
WEST VIRGINIA INTL YEAGER (CRW)

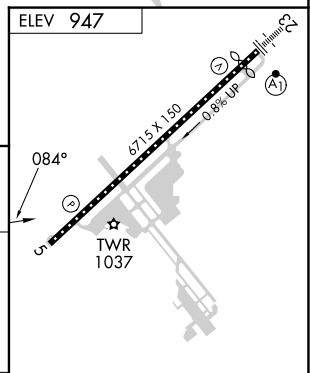
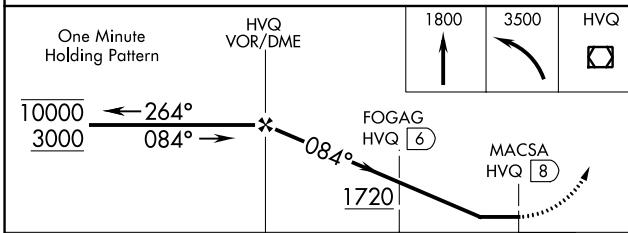
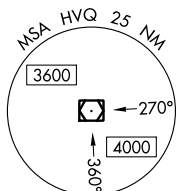
**MISSSED APPROACH:** Climb to 1800 then climbing left turn to 3500 direct HVQ VOR/DME and hold.

ATIS <b>127.6</b>	CHARLESTON APP CON <b>124.1 269.125</b>	CHARLESTON TOWER <b>125.7 257.8</b>	GND CON <b>121.8 348.6</b>	CLNC DEL <b>118.55</b>
----------------------	--	--	-------------------------------	---------------------------



NE-4, 26 DEC 2024 to 23 JAN 2025

NE-4, 26 DEC 2024 to 23 JAN 2025



CATEGORY	A	B	C	D
<b>C</b> CIRCLING	1720-1 773 (800-1)		1760-2½ 813 (900-2½)	1880-3 933 (1000-3)
FOGAG FIX MINIMUMS (DME REQUIRED)				
<b>C</b> CIRCLING	1600-1 653 (700-1)		1760-2½ 813 (900-2½)	1880-3 933 (1000-3)

HIRL Rwy 5-23 REIL Rwy 5					
FAF to MAP 8 NM					
Knots	60	90	120	150	180
Min:Sec	8:00	5:20	4:00	3:12	2:40