

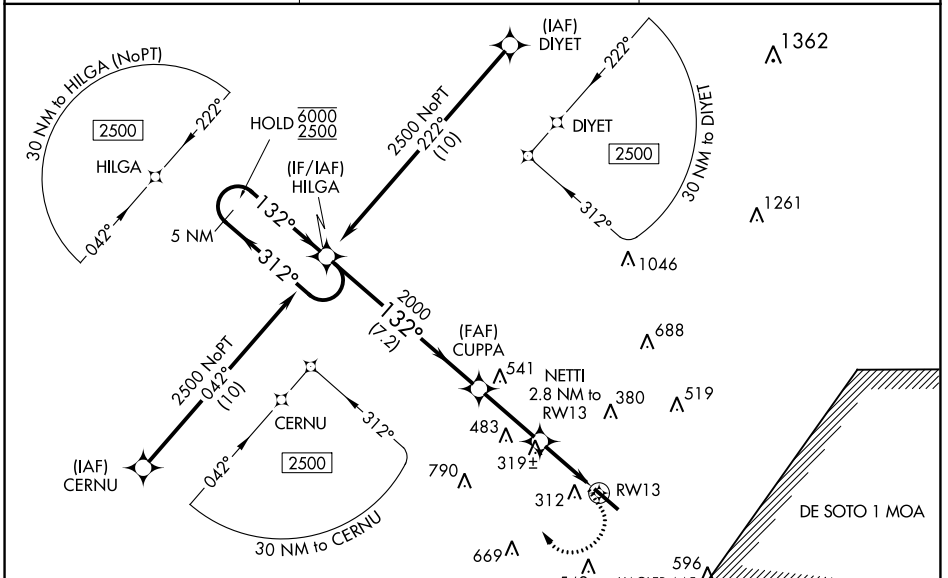
WAAS CH <b>86403</b> <b>W13A</b>	APP CRS <b>132°</b>	Rwy Idg TDZE <b>151</b> Apt Elev <b>151</b>	<b>5098</b>
--	------------------------	---	-------------

# RNAV (GPS) Z RWY 13

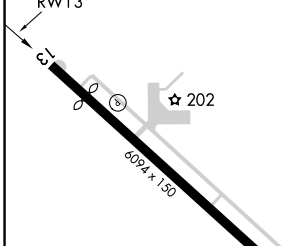
HATTIESBURG BOBBY L CHAIN MUNI (HBG)

RNP APCH.	MISSED APPROACH: Climb to 600 then climbing right turn to 2500 direct HILGA and hold.
<p><b>⚠</b> For uncompensated Baro-VNAV systems, LNAV/VNAV NA below -15°C or above 43°C. Cat D aircraft require ATC approval when R-4401 is active.</p>	

ASOS <b>135.425</b>	HOUSTON CENTER <b>126.8 327.8</b>	UNICOM <b>122.8 (CTAF) 0</b>
------------------------	--------------------------------------	---------------------------------



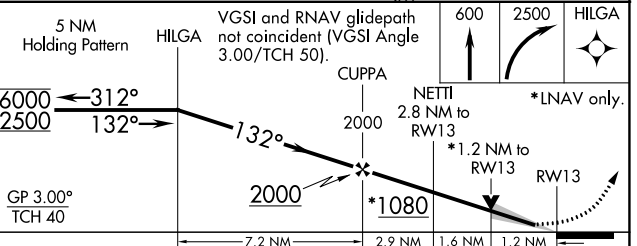
ELEV 151	TDZE 151
----------	----------



Uncontrolled helicopter and military airlift aircraft in vicinity of Hagler AAF and Shelby Auxiliary 1 Airfield.

HAGLER AAF  
530  
628

SHELBY AUXILIARY 1 AIRFIELD  
R4401 A-B



CATEGORY	A	B	C	D
LPV DA		351-3/4	200 (200-3/4)	
LNAV/VNAV DA		473-1	322 (400-1)	
LNAV MDA	580-1	429 (500-1)	580-1 1/4	429 (500-1 1/4)
CIRCLING	680-1 529 (600-1)	720-1 569 (600-1)	860-2 709 (800-2)	900-2 1/2 749 (800-2 1/2)

SC-4, 26 DEC 2024 to 23 JAN 2025

SC-4, 26 DEC 2024 to 23 JAN 2025