

WAAS CH <b>99704</b> <b>W35A</b>	APP CRS <b>347°</b>	Rwy Idg TDZE Apt Elev	<b>5000</b> <b>1864</b> <b>1864</b>
--	------------------------	-----------------------------	---

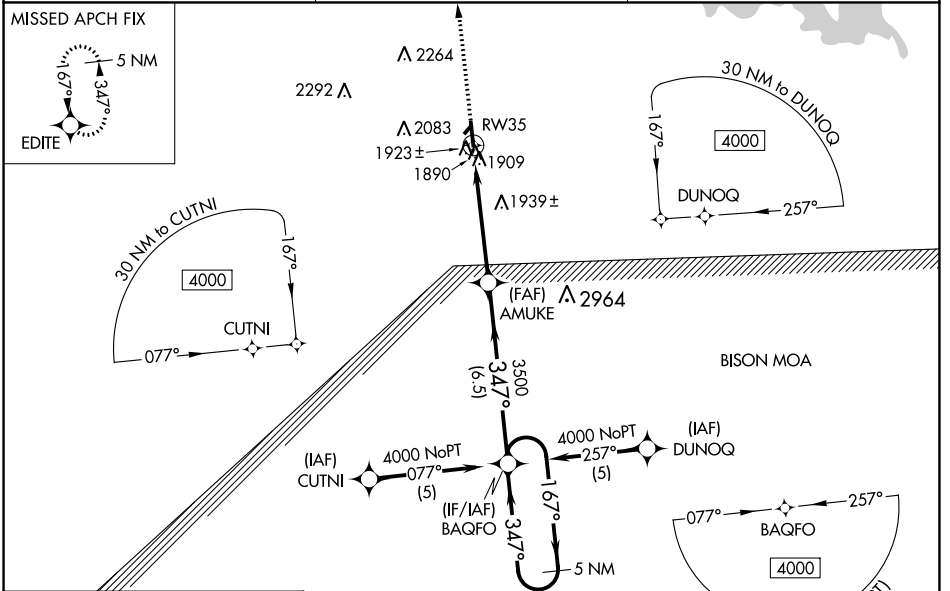
# RNAV (GPS) RWY 35

RUSSELL MUNI (RSL)

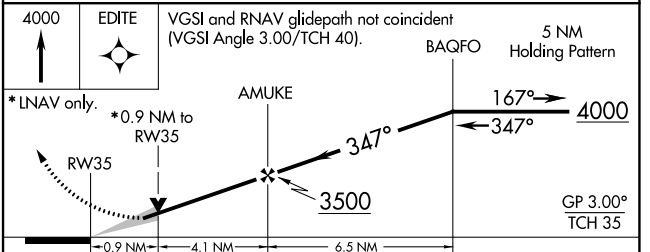
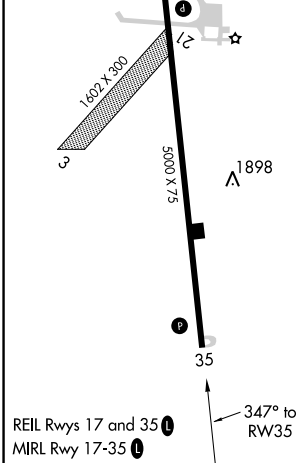
**⚠** Baro-VNAV NA when using Hays altimeter setting. For uncompensated Baro-VNAV systems, LNAV/VNAV NA below -18°C (0°F) or above 54°C (130°F). DME/DME RNP-0.3 NA.  
**⚠** VDP NA when using Hays altimeter setting. When local altimeter setting not received, use Hays altimeter setting: increase LPV all Cats DA to 2187 feet, LNAV/VNAV all Cats DA to 2267 feet and all visibilities ¼ SM; increase all MDA 80 feet, LNAV Cat C visibility ⅓ SM and Circling Cat C visibility ¼ SM. Circling NA to Rwys 3 and 21.

**MISSED APPROACH:**  
Climb to 4000 direct EDITE and hold.

ASOS <b>128.325</b>	KANSAS CITY CENTER <b>124.4 322.4</b>	UNICOM <b>122.7 (CTAF) 0</b>
------------------------	--	---------------------------------



ELEV <b>1864</b>	TDZE <b>1864</b>
------------------	------------------



CATEGORY	A	B	C	D
LPV DA		2118-1	254 (300-1)	NA
LNAV/VNAV DA		2198-1½	334 (400-1½)	NA
LNAV MDA		2200-1	336 (400-1)	NA
CIRCLING	2240-1 376 (400-1)	2320-1 456 (500-1)	2620-2¼ 756 (800-2¼)	NA