

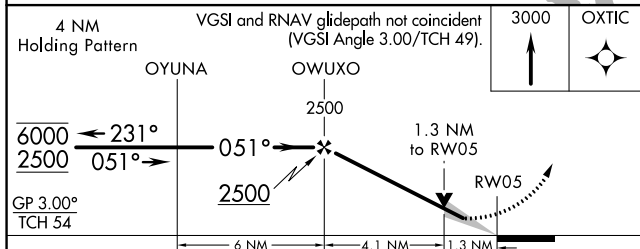
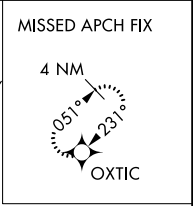
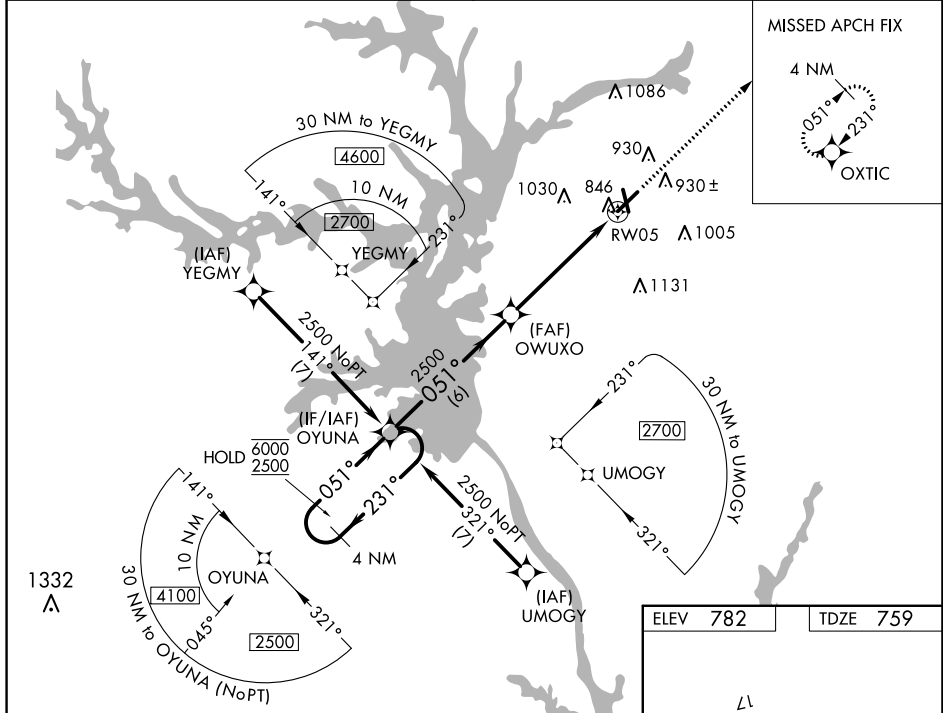
WAAS CH 62901 W05A	APP CRS 051°	Rwy Idg TDZE Apt Elev	6002 759 782
----------------------------------------	------------------------	-----------------------------	-----------------------------------------

RNAV (GPS) RWY 5

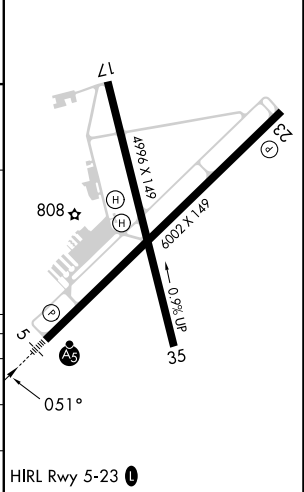
ANDERSON RGNL (A.ND)

RNP APCH - GPS.	MALSR	MISSED APPROACH: Climb to 3000 direct OXTIC and hold.
<p>▽ VDP NA when using Clemson altimeter setting. When local altimeter setting not received, use Clemson altimeter setting and increase LPV DA to 1006 feet; increase all MDAs 60 feet and LNAV visibility Cats C/D ½ SM, Circling visibility Cats C/D ¼ SM. Circling Rwy 17, 35 NA at night. For Inop ALS when using Clemson altimeter setting, increase LNAV visibility Cats C/D to 1½ SM.</p>		

ASOS 120.675	GREER APP CON★ 118.8 270.275	CTAF 123.60
------------------------	----------------------------------------	-----------------------



ELEV 782	TDZE 759
----------	----------



CATEGORY	A	B	C	D
LPV DA	959-½		200 (200-½)	
LNAV MDA	1200-½	441 (500-½)	1200-7/8	441 (500-7/8)
CIRCLING	1260-1 478 (500-1)	1320-1 538 (600-1)	1440-1¾ 658 (700-1¾)	1500-2¼ 718 (800-2¼)

SE-2, 26 DEC 2024 to 23 JAN 2025

SE-2, 26 DEC 2024 to 23 JAN 2025