

(JEDGI2.JEDGI) 23334

JEDGI TWO DEPARTURE

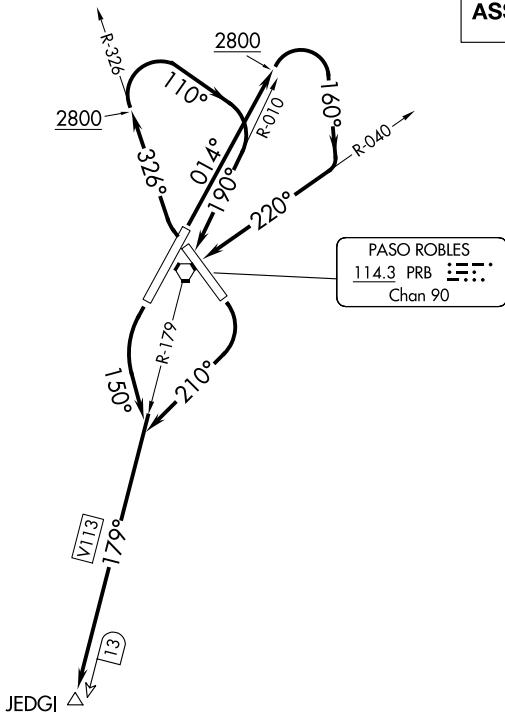
AL-858 (FAA)

PASO ROBLES MUNI (PRB)
PASO ROBLES, CALIFORNIA

OAKLAND CENTER
128.7 307.0

DME required.

**TOP ALTITUDE:
ASSIGNED BY ATC**



TAKEOFF MINIMUMS

- Rwy 1: Standard with minimum climb of 230' per NM to 2200.
- Rwy 13: Standard with minimum climb of 220' per NM to 1700.
- Rwy 19: Standard.
- Rwy 31: Standard with minimum climb of 235' per NM to 2200.

NOTE: Chart not to scale.

DEPARTURE ROUTE DESCRIPTION

TAKEOFF RUNWAY 1: Climb on heading 014° to 2800 then climbing right turn heading 160° to intercept PRB VORTAC R-040 to PRB VORTAC, then PRB VORTAC R-179 to JEDGI/PRB 13 DME, thence. . . .

TAKEOFF RUNWAY 13: Climbing right turn to heading 210° to intercept PRB VORTAC R-179 to JEDGI/PRB 13 DME, thence. . . .

TAKEOFF RUNWAY 19: Climbing left turn heading to 150° to intercept PRB VORTAC R-179 to JEDGI/PRB 13 DME, thence. . . .

TAKEOFF RUNWAY 31: Climbing right turn to intercept PRB VORTAC R-326 to 2800 then climbing right turn to heading 110° to intercept PRB VORTAC R-010 to PRB VORTAC, then PRB VORTAC R-179 to JEDGI/PRB 13 DME, thence. . . .

. . . maintain ATC assigned altitude; expect clearance to filed altitude 10 minutes after departure.

JEDGI TWO DEPARTURE
(JEDGI2.JEDGI) 19MAY22

PASO ROBLES, CALIFORNIA
PASO ROBLES MUNI (PRB)

SW-3, 26 DEC 2024 to 23 JAN 2025

SW-3, 26 DEC 2024 to 23 JAN 2025