

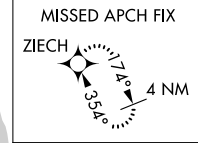
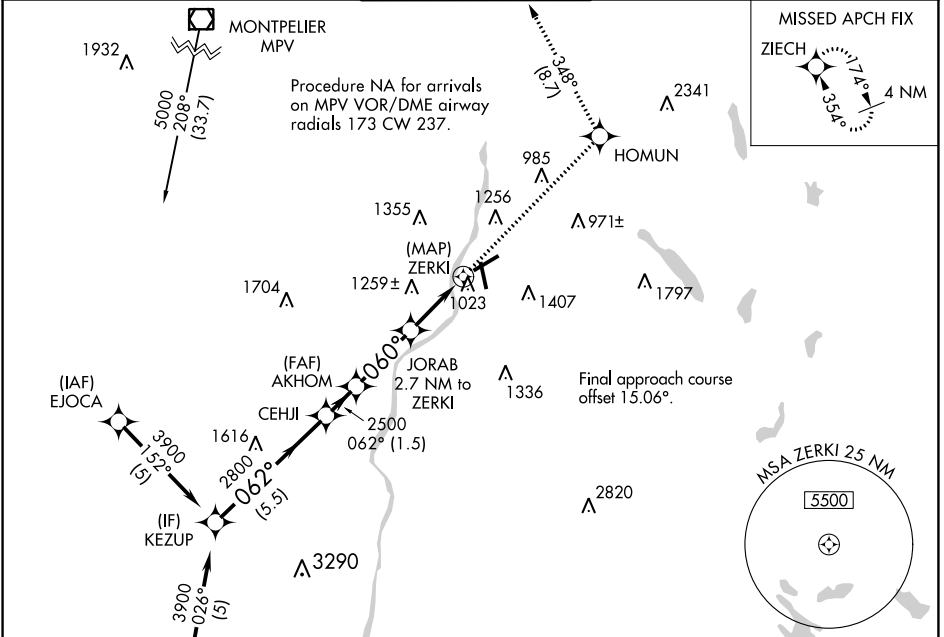
# RNAV (GPS) RWY 7 LEBANON MUNI (L.E.B)

APP CRS	Rwy Idg	<b>5496</b>
<b>060°</b>	TDZE	<b>564</b>
	Apt Elev	<b>603</b>

**▼** Rwy 7 helicopter visibility reduction below 3/4 SM NA.  
**▲** DME/DME RNP-0.3 NA.  
**❄** -20°C

**MISSED APPROACH:** Climb to 4000 direct HOMUN and on track 348° to ZIECH and hold.

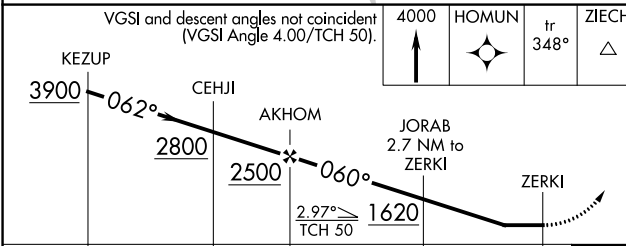
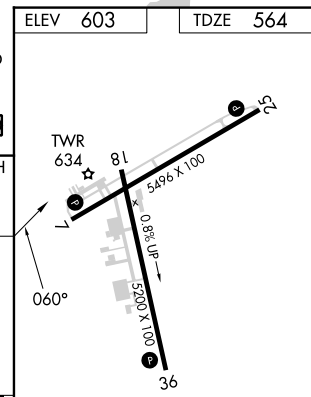
ATIS <b>118.65</b>	BOSTON CENTER <b>134.7 269.475</b>	<b>LEBANON TOWER ★</b> <b>125.95 (CTAF) 235.775</b>	GND CON <b>121.6</b>	UNICOM <b>122.95</b>
-----------------------	---------------------------------------	--	-------------------------	-------------------------



ELEV	603	TDZE	564
------	-----	------	-----

Procedure NA for arrivals on MPV VOR/DME airway radials 173 CW 237.

Procedure NA for arrivals on CON VOR/DME airway radials 246 CW 330.



CATEGORY	A	B	C	D
LNAV MDA	1460-1¼ 896 (900-1¼)	1460-2¾ 896 (900-2¾)	1460-3 896 (900-3)	1460-3 896 (900-3)
CIRCLING	1640-1¼ 1037 (1100-1¼)	1740-1½ 1137 (1200-1½)	1880-3 1277 (1300-3)	2020-3 1417 (1500-3)

- MIRL Rwy 7-25
- HIRL Rwy 18-36
- REIL Rws 7 and 25
- REIL Rwy 18

NE-1, 26 DEC 2024 to 23 JAN 2025

NE-1, 26 DEC 2024 to 23 JAN 2025