

LOM UI 293	APP CRS 038°	Rwy Idg 7098
		TDZE 763
		Apt Elev 768

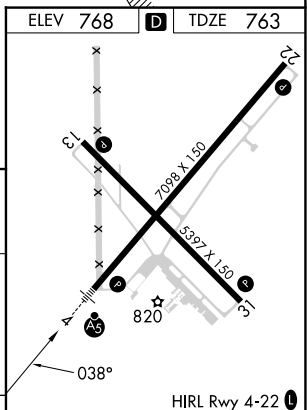
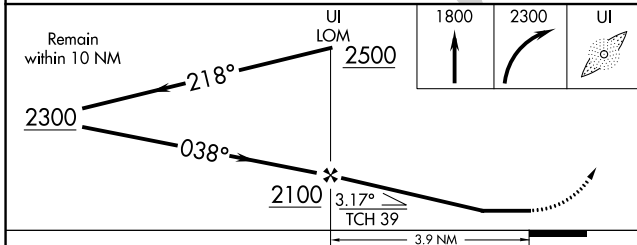
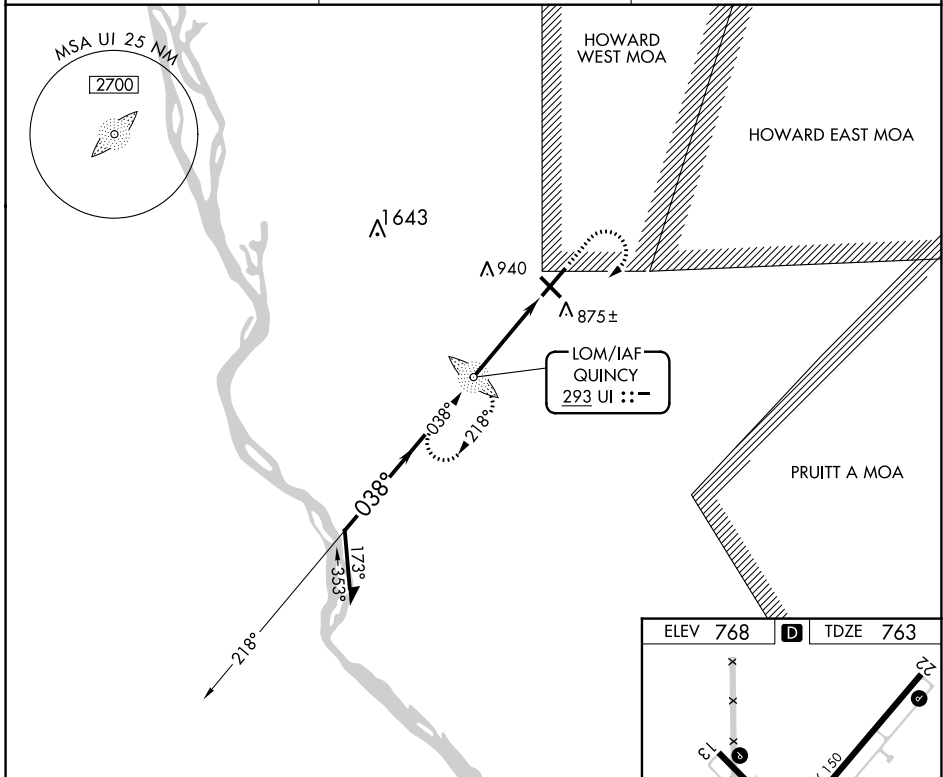
NDB RWY 4

QUINCY RGNL-BALDWIN FLD (UIN)

NA For inop ALS, increase S-04 Cat A and B visibility to 1 SM and Cat C and D visibility to 1 1/2 SM. When local altimeter setting not received, use Pittsfield altimeter setting and increase all MDAs 80 feet and S-04 visibility Cat C/D 1/4 SM. For inop ALS when local altimeter setting not received increase S-04 Cat A/B visibility to 1 SM and Cat C/D visibility to 1 1/2 SM.

MALS MISSED APPROACH: Climb to 1800 then climbing right turn to 2300 direct UI LOM and hold.

ASOS 121.425	KANSAS CITY CENTER 126.225 317.775	UNICOM 123.0 (CTAF)
------------------------	--	-------------------------------



CATEGORY	A	B	C	D
S-4	1180-3/4 417 (500-3/4)			
C CIRCLING	1180-1 412 (500-1)	1220-1 452 (500-1)	1240-1 1/2 472 (500-1 1/2)	1320-2 552 (600-2)

FAF to MAP 3.9 NM					
Knots	60	90	120	150	180
Min:Sec	3:54	2:36	1:57	1:34	1:18