

WAAS CH 65910 W13A	APP CRS 133°	Rwy Idg TDZE 5123 767 Apt Elev 769
--	------------------------	--

RNAV (GPS) RWY 13

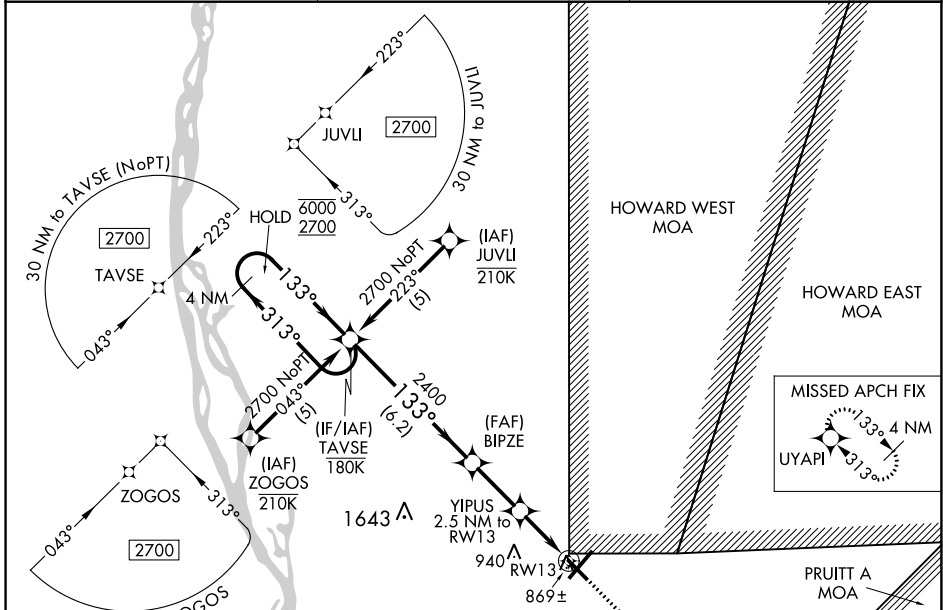
QUINCY RGNL-BALDWIN FLD (UIN)

RNP APCH.

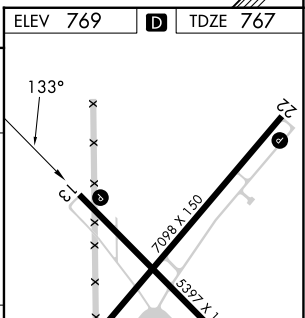
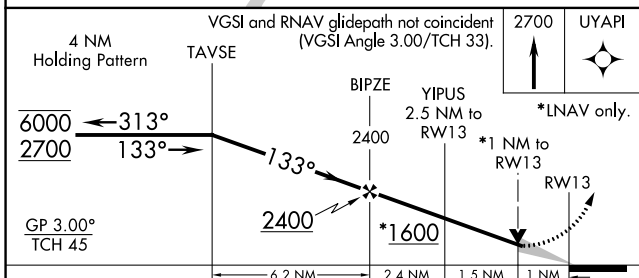
⚠ For uncompensated Baro-VNAV systems, LNAV/VNAV NA below -16° C or above 54° C.

MISSED APPROACH:
Climb to 2700 direct UYAPI and hold.

ASOS 121.425	KANSAS CITY CENTER 126.225 317.775	UNICOM 123.0 (CTAF)
------------------------	--	-------------------------------



ELEV 769	D	TDZE 767
----------	----------	----------



CATEGORY	A	B	C	D
LPV DA		1116-1¼	349 (400-1¼)	
LNAV/VNAV DA		1139-1¼	372 (400-1¼)	
LNAV MDA	1120-1	353 (400-1)		1120-1¼ 353 (400-1¼)
CIRCLING	1180-1 411 (500-1)	1220-1 451 (500-1)	1240-1½ 471 (500-1½)	1320-2 551 (600-2)

HIRL Rwy 4-22 **Ⓛ**
MIRL Rwy 13-31 **Ⓛ**
REIL Rwy 22 **Ⓛ**

EC-3, 26 DEC 2024 to 23 JAN 2025

EC-3, 26 DEC 2024 to 23 JAN 2025