

WAAS CH 45705 W22A	APP CRS 218°	Rwy Idg TDZE Apt Elev	7098 753 768
--	------------------------	-----------------------------	---

RNAV (GPS) RWY 22

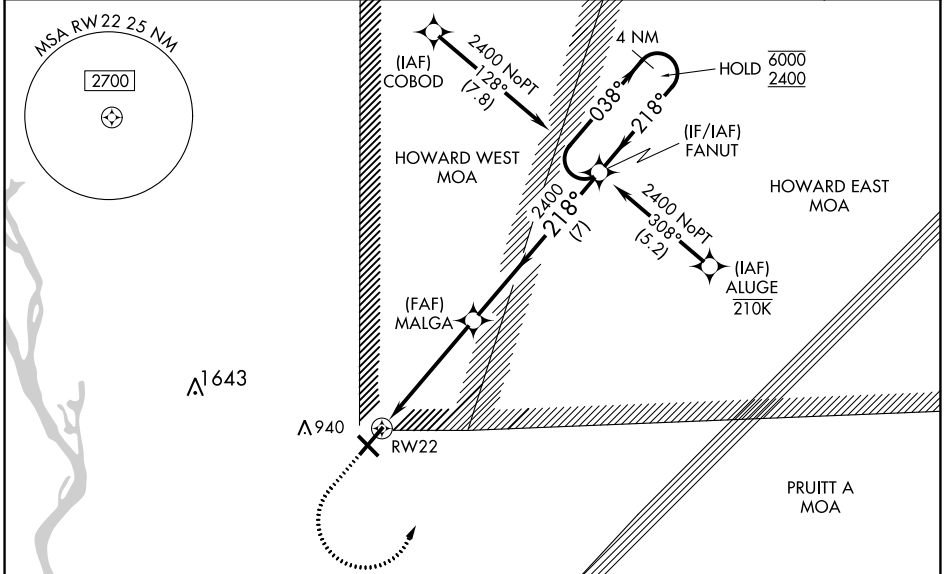
QUINCY RGNL-BALDWIN FLD (UIN)

RNP APCH - GPS.

For uncompensated Baro-VNAV systems, LNAV/VNAV NA below -21°C or above 54°C. Baro-VNAV and VDP NA when using Pittsfield altimeter setting. When local altimeter setting not received, use Pittsfield altimeter setting and increase LPV DA to 1073 feet and all visibilities 1/8 SM. Increase LNAV/VNAV DA to 1120 feet and all visibilities 1/8 SM. Increase all MDAs 80 feet and LNAV visibility Cat C/D 1/8 SM.

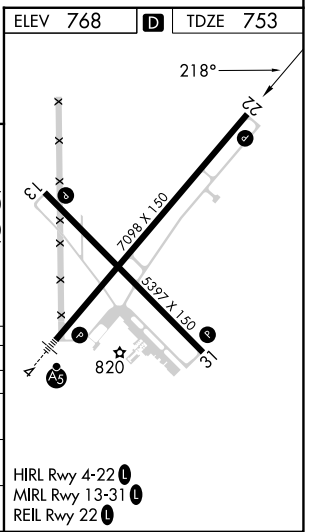
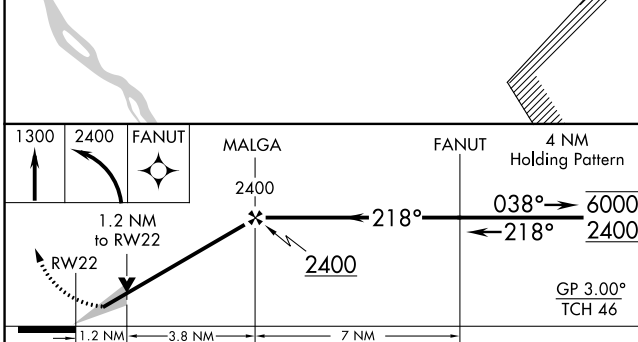
MISSED APPROACH: Climb to 1300 then climbing left turn to 2400 direct FANUT and hold.

ASOS 121.425	KANSAS CITY CENTER 126.225 317.775	UNICOM 123.0 (CTAF)
------------------------	--	-------------------------------



EC-3, 26 DEC 2024 to 23 JAN 2025

EC-3, 26 DEC 2024 to 23 JAN 2025



CATEGORY	A	B	C	D
LPV DA		1003-3/4	250 (300-3/4)	
LNAV/VNAV DA		1050-7/8	297 (300-7/8)	
LNAV MDA	1180-1	427 (500-1)	1180-1/4	427 (500-1/4)
CIRCLING	1180-1 412 (500-1)	1220-1 452 (500-1)	1240-1/2 472 (500-1/2)	1320-2 552 (600-2)

HIRL Rwy 4-22
MIRL Rwy 13-31
REIL Rwy 22