


LOC/DME I-LFT 109.5 Chan 32	APP CRS 216°	Rwy Idg 7659 TDZE 38 Apt Elev 42
---	------------------------	---

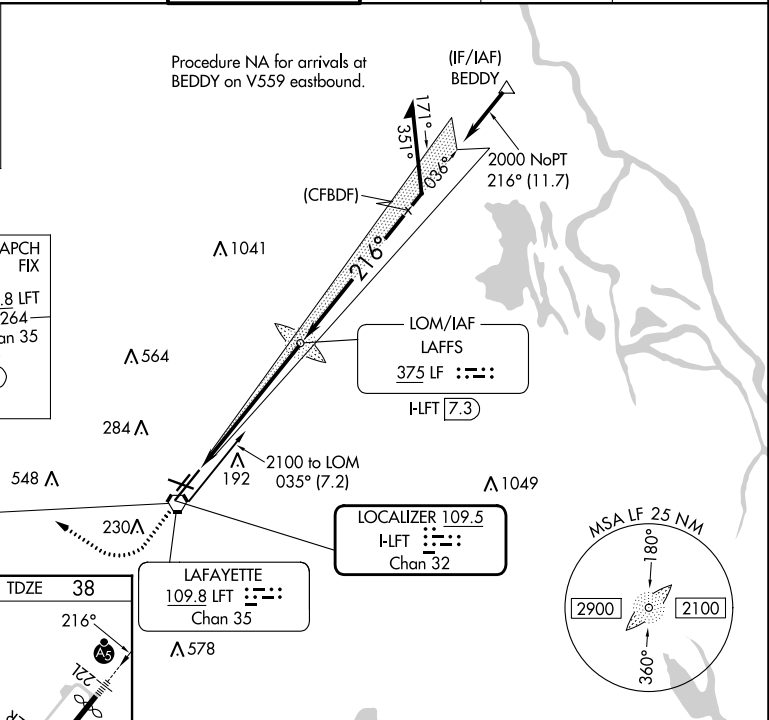
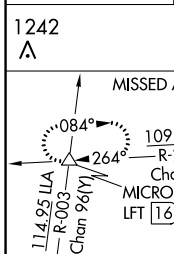
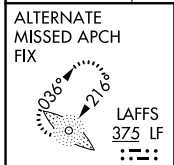
ILS or LOC RWY 22L

LAFAYETTE RGNL/PAUL FOURNET FLD (L.F.T)

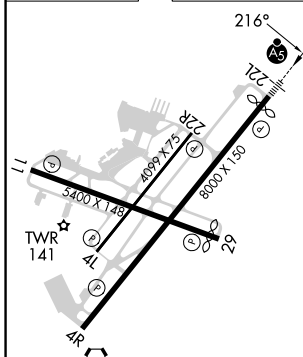
⚠ VDP NA with Acadiana Rgnl altimeter setting. When local altimeter setting not received, use Acadiana Rgnl altimeter setting and increase DA to 267 feet; increase all MDA 40 feet and S-LOC 22L visibility Cat C/D to RVR 5000 and Circling visibility Cat C/D ¼ SM. For inop MALSR when using Acadiana Rgnl altimeter setting, increase S-LOC 22L Cat C and D visibility to 1 ½ mile.
****RVR 1800 authorized with use of FD or AP or HUD to DA (NA when using Acadiana Rgnl altimeter setting).**

MALSR

MISSED APPROACH:
 Climb to 800 then climbing right turn to 2100 on LFT VORTAC R-264 to MICRO INT/ LFT 16 DME and hold.

ATIS 134.05	LAFAYETTE APP CON * 121.1 363.0	LAFAYETTE TOWER * 118.5 (CTAF) 0 257.8	GND CON 121.8	CLNC DEL 125.55	UNICOM 122.95
-----------------------	---	--	-------------------------	---------------------------	-------------------------



ELEV 42	D	TDZE 38
---------	----------	---------



216°

22L

22R

409.5 X 1.75

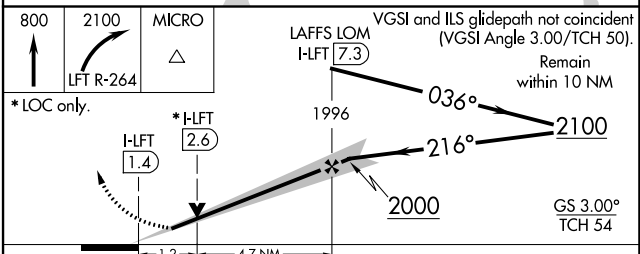
051 X 0.008

5400 X 1.49

TWR 141

4L

4R



REIL Rwy 4L, 4R, 11, 22R and 29
 MIRL Rwy 11-29 and 4L-22R
 HIRL Rwy 4R-22L

FAF to MAP 5.9 NM

Knots	60	90	120	150	180
Min:Sec	5:54	3:56	2:57	2:22	1:58

CATEGORY	A	B	C	D
S-ILS 22L**		238/24	200 (200-½)	
S-LOC 22L	480/24	442 (500-½)	480/45	442 (500-¾)
C CIRCLING	540-1 498 (500-1)	580-1 538 (600-1)	700-1¾ 658 (700-1¾)	700-2 658 (700-2)

SC-4, 26 DEC 2024 to 23 JAN 2025

SC-4, 26 DEC 2024 to 23 JAN 2025