

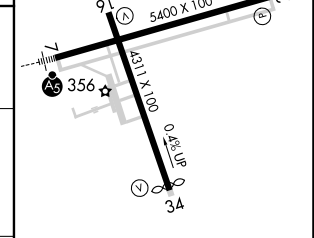
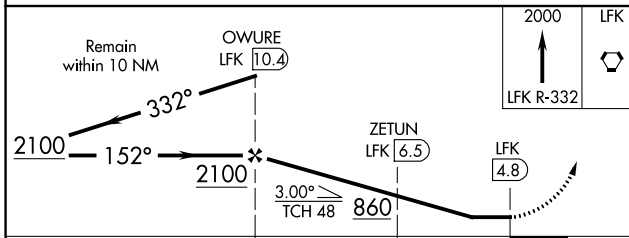
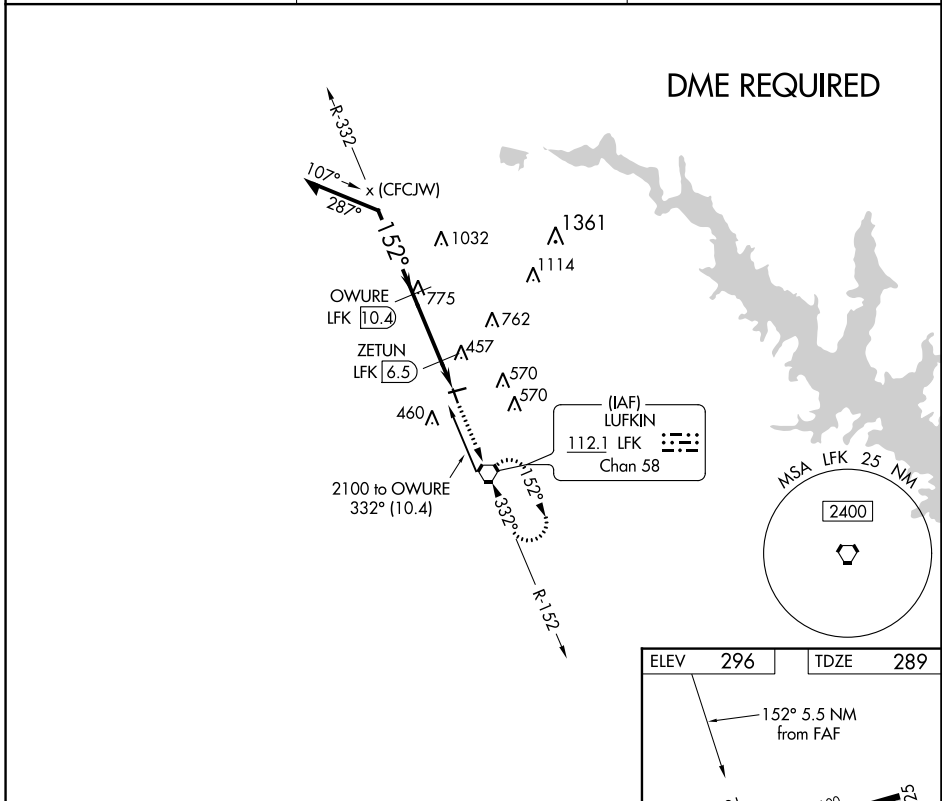
VORTAC LFK <b>112.1</b> Chan <b>58</b>	APP CRS <b>152°</b>	Rwy Idg TDZE <b>289</b> Apt Elev <b>296</b>	<b>4311</b>
----------------------------------------------	------------------------	---------------------------------------------------	-------------

**VOR RWY 16**  
ANGELINA COUNTY (L'F'K)

**⚠** Rwy 16 helicopter visibility reduction below 1 SM NA.  
**⚠** DME Required. Straight-in Rwy 16 NA at night, Circling Rwy 16, 25 NA at night.

MISSED APPROACH: Climb to 2000 on LFK VORTAC R-332 to LFK VORTAC and hold.

ASOS <b>120.625</b>	HOUSTON CENTER <b>125.175 285.575</b>	UNICOM <b>123.0</b> (CTAF) <b>0</b>
------------------------	------------------------------------------	----------------------------------------



CATEGORY	A	B	C	D
S-16	720-1 431 (500-1)		720-1¼ 431 (500-1¼)	
<b>C</b> CIRCLING	740-1 444 (500-1)	760-1 464 (500-1)	880-1½ 584 (600-1½)	1140-2¾ 844 (900-2¾)

MIRL Rwy 7-25 and 16-34 **0**

SC-5, 26 DEC 2024 to 23 JAN 2025

SC-5, 26 DEC 2024 to 23 JAN 2025