

LOC/DME I-GRB <b>109.5</b> Chan 32	APP CRS <b>242°</b>	Rwy Idg TDZE Apt Elev	<b>7699</b> <b>682</b> <b>695</b>
--	------------------------	-----------------------------	---

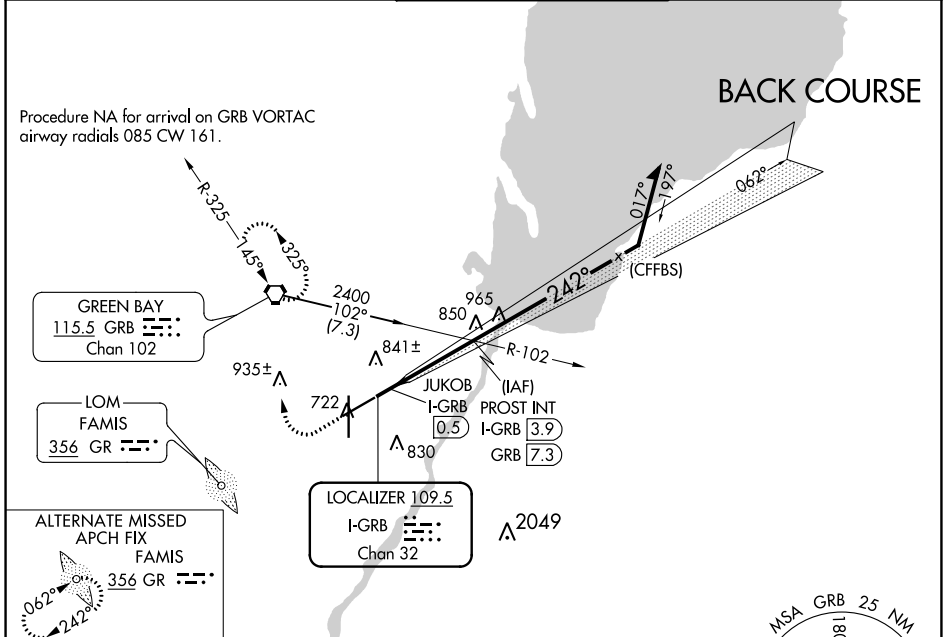
# LOC BC RWY 24

GREEN BAY/AUSTIN STRAUBEL INTL (GRB)

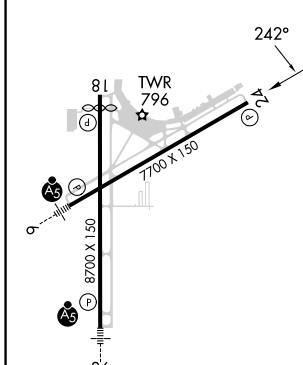
**ASR**

MISSED APPROACH: Climb to 1500 then climbing right turn to 2500 direct GRB VORTAC and hold.

ATIS <b>124.1</b>	GREEN BAY APP CON* <b>119.4 338.2</b>	GREEN BAY TOWER* <b>118.7 (CTAF) 257.8</b>	GND CON <b>121.9</b>	CLNC DEL <b>121.75</b>
----------------------	--	---	-------------------------	---------------------------



ELEV 695	TDZE 682
----------	----------



1500 2500 GRB

PROST INT I-GRB 3.9

Remain within 10 NM

Disregard GS indications.

JUKOB I-GRB 0.5

2100

062°

242°

2400

3.14° TCH 50

Use I-GRB DME when on the localizer course.

0.7 3.4 NM

	A	B	C	D
5-24	1100-1 418 (500-1)		1100-1½ 418 (500-1½)	
<b>CIRCLING</b>	1200-1 505 (600-1)		1300-1¾ 605 (700-1¾)	1300-2 605 (700-2)

EC-3, 26 DEC 2024 to 23 JAN 2025

EC-3, 26 DEC 2024 to 23 JAN 2025