

VOR/DME SNY <b>115.9</b> Chan <b>106</b>	APP CRS <b>130°</b>	Rwy Idg <b>6600</b> TDZE <b>4313</b> Apt Elev <b>4313</b>
--	------------------------	---

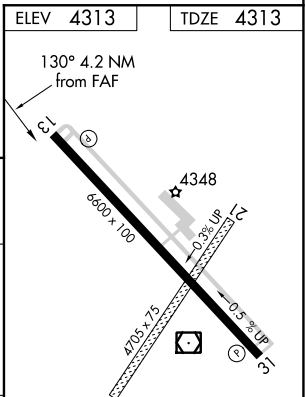
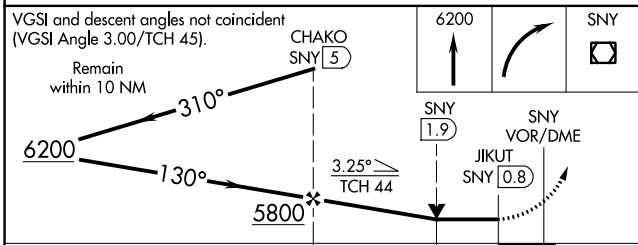
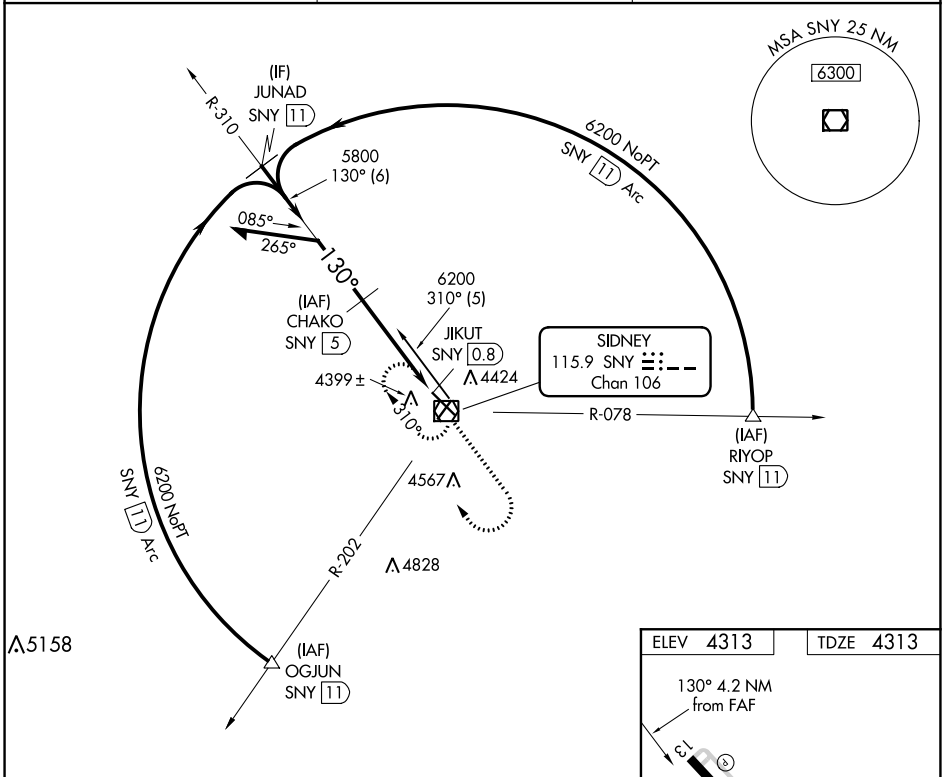
# VOR/DME RWY 13

SIDNEY MUNI/LLOYD W CARR FLD (SNY)

**⚠** VDP NA when using Kimball altimeter setting. When local altimeter setting not received, use Kimball altimeter setting; increase all MDAs 160 feet and visibility Cats C and D ½ SM.

**⚠** MISSED APPROACH: Climb to 6200 then right turn direct SNY VOR/DME and hold.

ASOS <b>125.775</b>	DENVER CENTER <b>118.475 225.4</b>	UNICOM <b>122.8 (CTAF) 0</b>
------------------------	---------------------------------------	---------------------------------



VGSI and descent angles not coincident (VGSI Angle 3.00/TCH 45).  
Remain within 10 NM

6200	310°	CHAKO SNY (5)	6200	SNY (1.9)	JIKUT SNY (0.8)	SNY VOR/DME
5800	130°		3.25° TCH 44			
			3.1 NM	1.1 NM		

CATEGORY	A	B	C	D
S-13	4700-1	387 (400-1)		4700-1¼ 387 (400-1¼)
CIRCLING	4760-1 447 (500-1)	4780-1 467 (500-1)	4920-1¾ 607 (700-1¾)	4960-2 647 (700-2)

REIL Rwys 13 and 31 0  
HIRL Rwy 13-31 0

NC-2, 26 DEC 2024 to 23 JAN 2025

NC-2, 26 DEC 2024 to 23 JAN 2025