

VOR/DME SNY <b>115.9</b> Chan <b>106</b>	APP CRS <b>293°</b>	Rwy Idg <b>6600</b> TDZE <b>4290</b> Apt Elev <b>4313</b>
--	------------------------	---

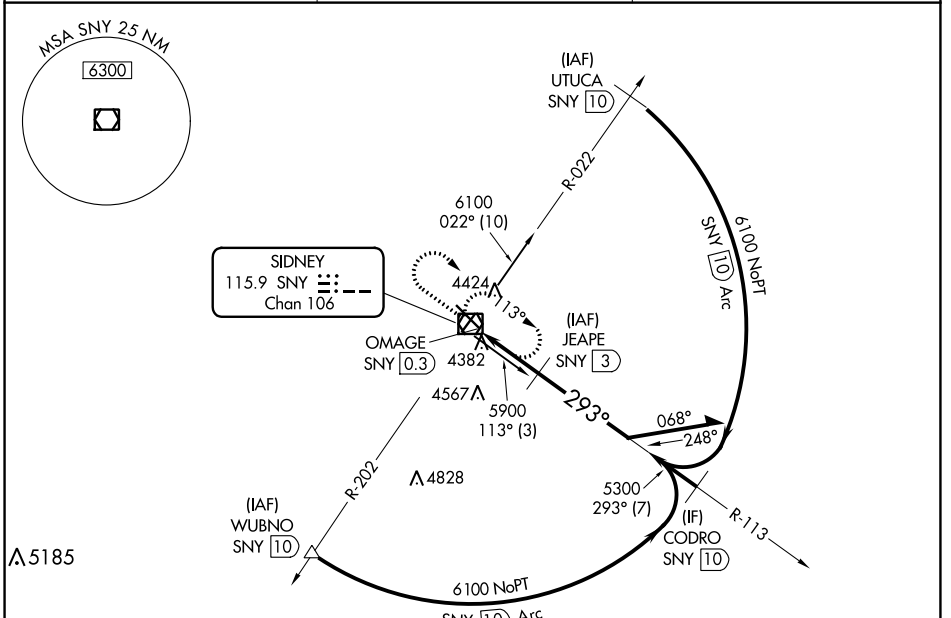
# VOR/DME RWY 31

SIDNEY MUNI/LLOYD W CARR FLD (SNY)

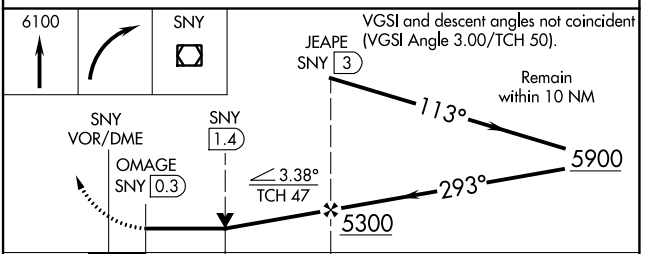
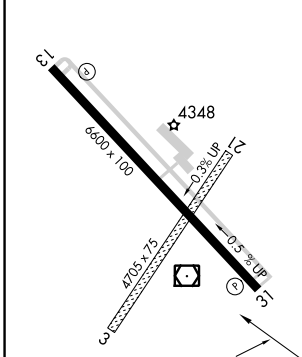
**⚠** When local altimeter setting not received, use Kimball altimeter setting: increase all MDAs 160 feet and visibility Cats C and D ½ SM. VDP NA when using Kimball altimeter setting.

MISSED APPROACH: Climb to 6100 then right turn direct SNY VOR/DME and hold.

ASOS <b>125.775</b>	DENVER CENTER <b>118.475 225.4</b>	UNICOM <b>122.8 (CTAF) 0</b>
------------------------	---------------------------------------	---------------------------------



ELEV 4313	TDZE 4290
-----------	-----------



CATEGORY	A	B	C	D
S-31	4680-1	390 (400-1)		4680-1½ 390 (400-1½)
CIRCLING	4760-1 447 (500-1)	4780-1 467 (500-1)	4920-1¾ 607 (700-1¾)	4960-2 647 (700-2)

NC-2, 26 DEC 2024 to 23 JAN 2025

NC-2, 26 DEC 2024 to 23 JAN 2025