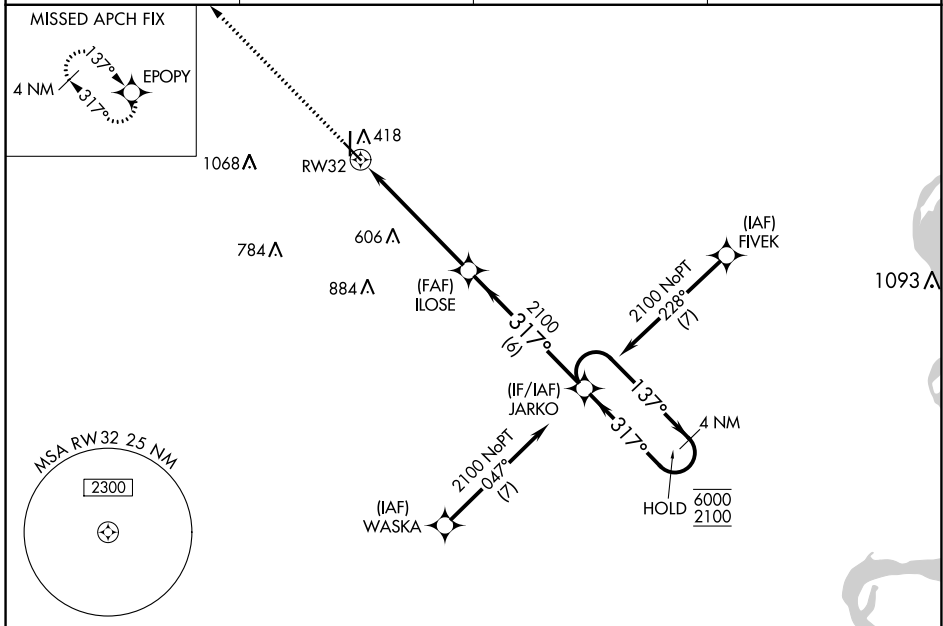


WAAS CH <b>40410</b> <b>W32A</b>	APP CRS <b>317°</b>	Rwy Idg TDZE Apt Elev	<b>5001</b> <b>293</b> <b>295</b>
--	------------------------	-----------------------------	---

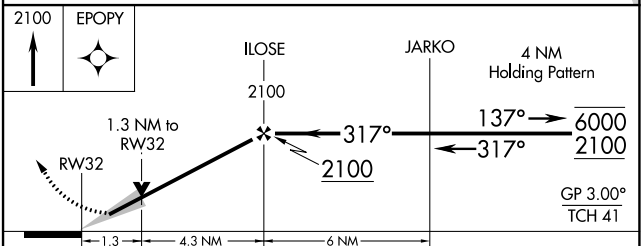
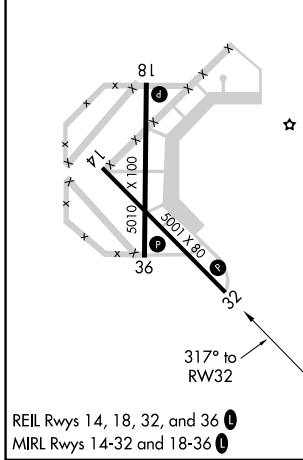
# RNAV (GPS) RWY 32

MALDEN RGNL (MAW)

RNP APCH-GPS. ▼ For uncompensated Baro-VNAV systems, LNAV/VNAV NA below -15°C or above 54°C.		MISSED APPROACH: Climb to 2100 direct EPOPY and hold.	
AWOS-3PT <b>119.825</b>	MEMPHIS CENTER <b>133.65 292.15</b>	GCO <b>135.075</b>	UNICOM <b>122.8 (CTAF) 0</b>



ELEV 295	TDZE 293
----------	----------



CATEGORY	A	B	C	D
LPV DA	543-1 250 (300-1)			NA
LNAV/VNAV DA	543-1 250 (300-1)			NA
LNAV MDA	740-1	447 (500-1)	740-1 3/8 447 (500-1 3/8)	NA
CIRCLING	740-1 445 (500-1)	800-1 505 (600-1)	800-1 1/2 505 (600-1 1/2)	NA

NC-3, 26 DEC 2024 to 23 JAN 2025

NC-3, 26 DEC 2024 to 23 JAN 2025