

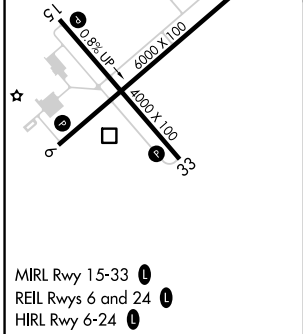
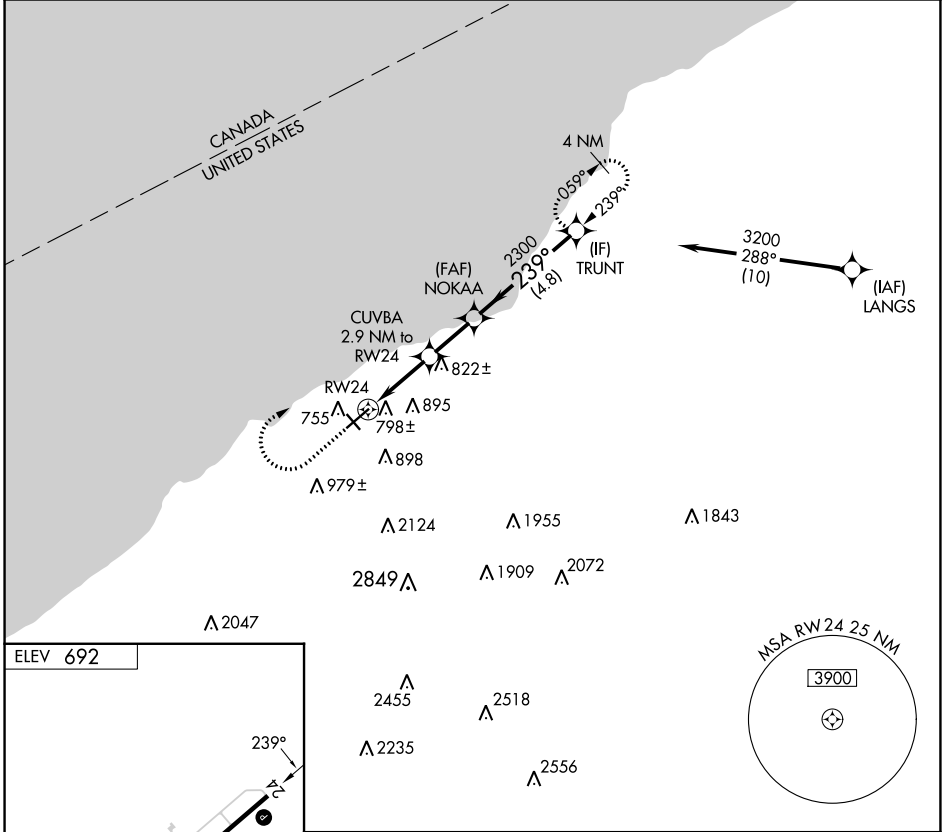
APP CRS 239°	Rwy Idg TDZE Apt Elev	N/A N/A 692
------------------------	-----------------------------	--

RNAV (GPS)-A

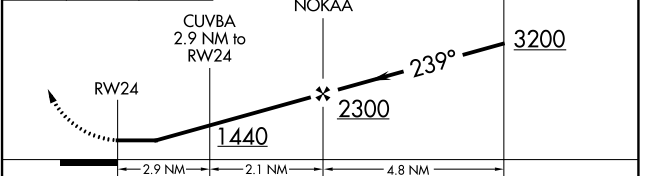
CHAUTAUGUA COUNTY/DUNKIRK (DKK)

RNP APCH - GPS.	<p>V Circling Cat D NA southeast of Rwy 6 and southwest of Rwy 33. A Circling Rwy 6, 24, 33 NA at night. ☼ -22°C Rwy 6, 24, 33 helicopter visibility reduction below 1 SM NA.</p>	MISSED APPROACH: Climb to 1900 then climbing right turn to 3200 direct TRUNT and hold.
-----------------	--	--

ASOS 119.275	BUFFALO APP CON 126.5 317.6	UNICOM 123.075 (CTAF) ①
------------------------	---------------------------------------	--



1900	3200	TRUNT	Visual Segment - Obstacles.
------	------	-------	-----------------------------



CATEGORY	A	B	C	D
C CIRCLING	1200-1 508 (600-1)	1320-1 628 (700-1)	1640-2¾ 948 (1000-2¾)	2140-3 1448 (1500-3)

NE-2, 26 DEC 2024 to 23 JAN 2025

NE-2, 26 DEC 2024 to 23 JAN 2025