

APP CRS	Rwy Idg	N/A
<b>059°</b>	TDZE	N/A
	Apt Elev	<b>692</b>

# RNAV (GPS)-B

CHAUTAUGUA COUNTY/DUNKIRK (DKK)

RNP APCH:

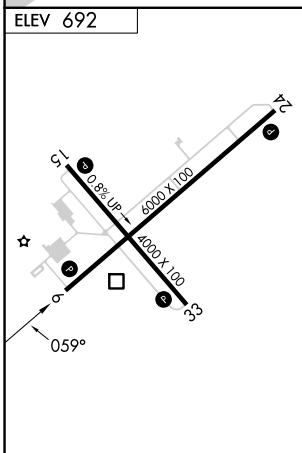
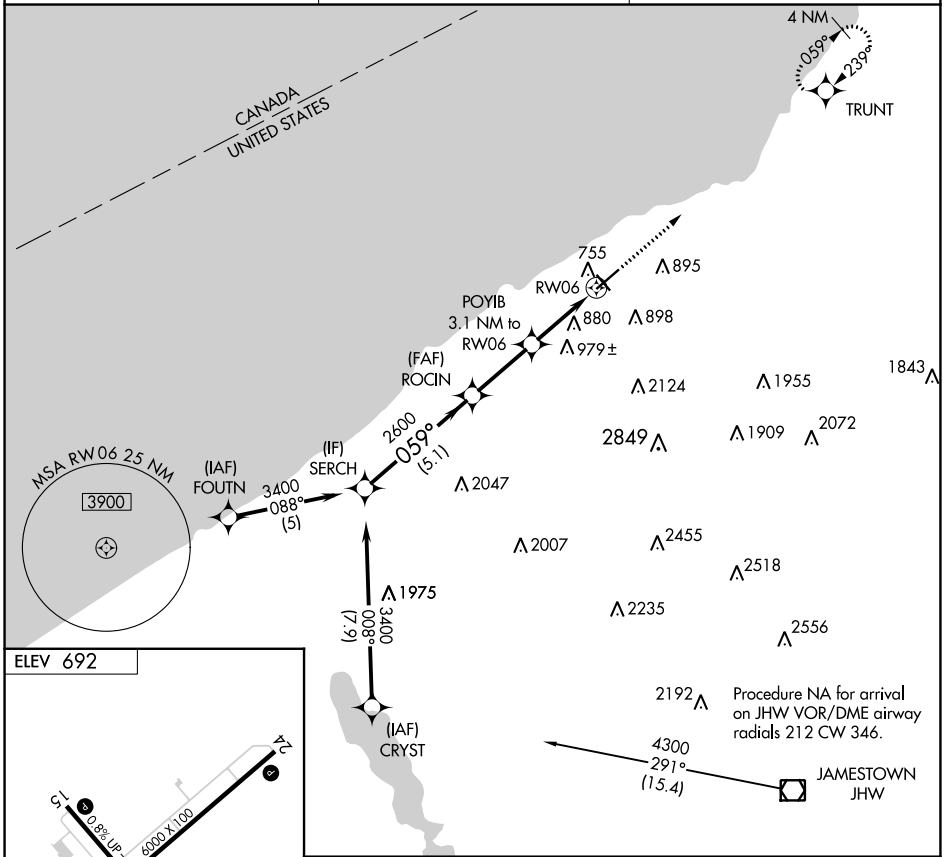
Circling to Rwy 6, 24, 33 NA at night.  
 Circling Cat D NA southeast of Rwy 6 and southwest of Rwy 33.

MISSED APPROACH: Climb to 3200 direct TRUNT and hold.

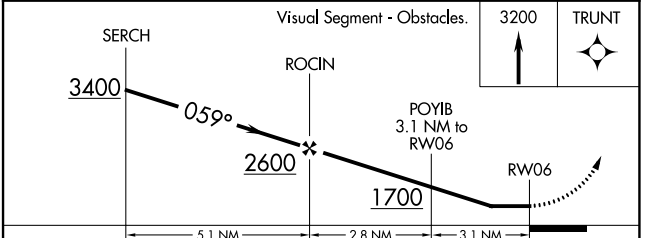
ASOS  
**119.275**

BUFFALO APP CON  
**126.5 317.6**

UNICOM  
**123.075 (CTAF)**



MIRL Rwy 15-33   
 REIL Rwy 6 and 24   
 HIRL Rwy 6-24



CATEGORY	A	B	C	D
CIRCLING	1200-1 508 (600-1)	1320-1 628 (700-1)	1640-2¾ 948 (1000-2¾)	2140-3 1448 (1500-3)

NE-2, 26 DEC 2024 to 23 JAN 2025

NE-2, 26 DEC 2024 to 23 JAN 2025