


LOC I-FOG 110.3	APP CRS 321°	Rwy Idg 7975
		TDZE 222
		Apt Elev 258

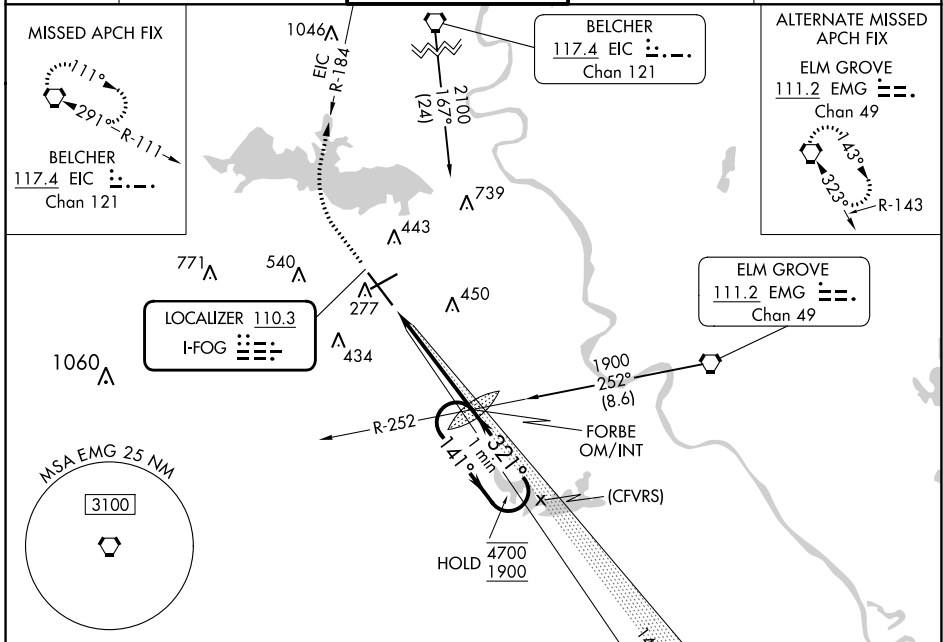
ILS or LOC RWY 32

SHREVEPORT RGNL (SHV)

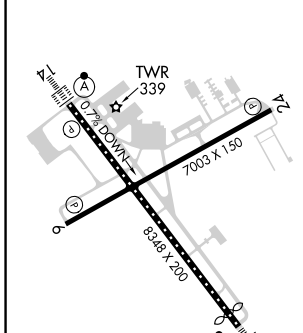
▼ Rwy 32 helicopter visibility reduction below RVR 4000 NA.
▲ Inop table does not apply to S-ILS 32 all Cats.
ASR For inop ALS, increase S-LOC 32 Cat A and B visibility to RVR 5500 and Cat C and D visibility to 1 $\frac{1}{2}$ SM.

MALSR 
MISSED APPROACH: Climb to 800 then climbing right turn to 3100 on EIC VORTAC R-184 to EIC VORTAC and hold.

ATIS 128.45	SHREVEPORT APP CON 119.9 335.55	SHREVEPORT TOWER 121.4 236.775	GND CON 121.175 236.775	CLNC DEL 124.65
-----------------------	---	--	-----------------------------------	---------------------------



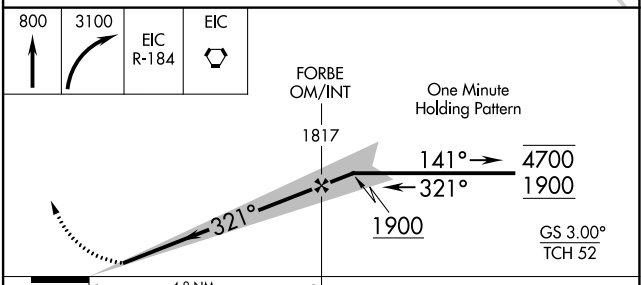
ELEV 258	D	TDZE 222
----------	----------	----------



REIL Rwy 6 and 24
 HIRL Rwy 14-32
 MIRL Rwy 6-24
 TDZ/CL Rwy 14

FAF to MAP 4.8 NM

Knots	60	90	120	150	180
Min:Sec	4:48	3:12	2:24	1:55	1:36



CATEGORY	A	B	C	D
S-ILS 32	422/40 200 (200- $\frac{3}{4}$)			
S-LOC 32	720/40	498 (500- $\frac{3}{4}$)	720/50	498 (500-1)
<input checked="" type="checkbox"/> CIRCLING	760-1	502 (600-1)	980-2 722 (800-2)	1100-2 $\frac{3}{4}$ 842 (900-2 $\frac{3}{4}$)

SC-4, 26 DEC 2024 to 23 JAN 2025

SC-4, 26 DEC 2024 to 23 JAN 2025