


|              |             |          |             |
|--------------|-------------|----------|-------------|
| LOC I-TWFF   | APP CRS     | Rwy Idg  | <b>8704</b> |
| <b>108.3</b> | <b>258°</b> | TDZE     | <b>4153</b> |
|              |             | Apt Elev | <b>4153</b> |

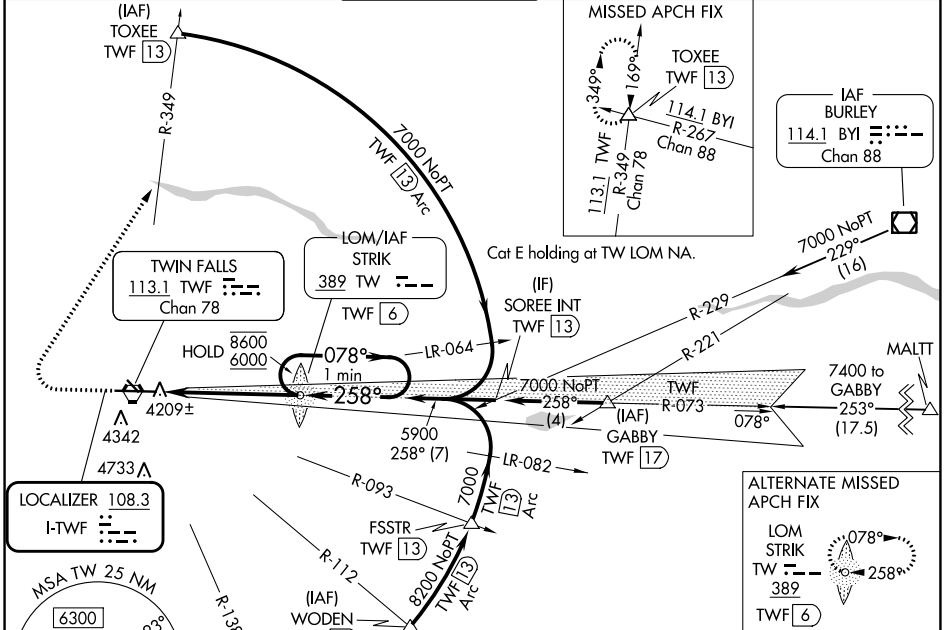
**ILS or LOC RWY 26**  
JOSLIN FLD/MAGIC VALLEY RGNL (TWF)

ADF or DME required.

⚠ Circling Rwy 30 NA at night. When local altimeter setting not received, use Jerome altimeter setting: increase S-ILS 26 DA to 4402 feet; increase all MDAs 60 feet and S-LOC 26 visibility Cat C/D/E 1/2 SM. For inop ALS when using local or Jerome altimeter setting, increase S-ILS 26 Cat E visibility to 3/4 SM and S-LOC 26 Cat E to 1 SM.

MALSR  MISSED APPROACH: Climb to 4700 then climbing right turn to 7000 on heading 020° and on TWF VORTAC R-349 to TOXEE INT/TWFF 13 DME and hold.

|                |                      |                           |              |               |               |
|----------------|----------------------|---------------------------|--------------|---------------|---------------|
| ASOS           | TWIN FALLS APP CON * | TWIN FALLS TOWER *        | GND CON      | CLNC DEL      | UNICOM        |
| <b>135.025</b> | <b>126.7 353.75</b>  | <b>118.2 (CTAF) 317.5</b> | <b>121.7</b> | <b>123.65</b> | <b>122.95</b> |



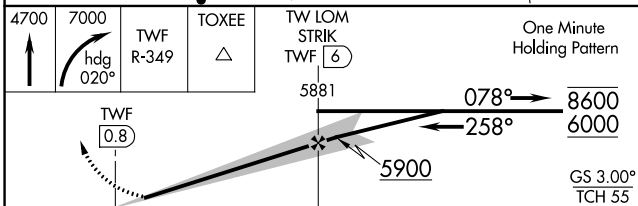
ELEV 4153 TDZE 4153

LOCALIZER 108.3 I-TWFF

MSA TW 25 NM

6300 9300 9000 6343

073° 222° 343°



| CATEGORY | A                     | B                     | C                              | D      | E            |
|----------|-----------------------|-----------------------|--------------------------------|--------|--------------|
| S-ILS 26 |                       | 4353-1/2              | 200 (200-1/2)                  |        |              |
| S-LOC 26 |                       | 4480-1/2              | 327 (400-1/2)                  |        |              |
| CIRCLING | 4700-1<br>547 (600-1) | 4780-1<br>627 (700-1) | 5100-2 3/4<br>947 (1000-2 3/4) | 5100-3 | 947 (1000-3) |

REIL Rwy 8

HIRL Rwy 8-26

FAF to MAP 5.2 NM

|         |      |      |      |      |      |
|---------|------|------|------|------|------|
| Knots   | 60   | 90   | 120  | 150  | 180  |
| Min:Sec | 5:12 | 3:28 | 2:36 | 2:05 | 1:44 |

NW-1, 26 DEC 2024 to 23 JAN 2025

NW-1, 26 DEC 2024 to 23 JAN 2025