


VORTAC TWF <b>113.1</b> Chan <b>78</b>	APP CRS <b>248°</b>	Rwy Idg TDZE <b>4154</b> Apt Elev <b>4154</b>	<b>8704</b>
--	------------------------	---	-------------

# VOR RWY 26

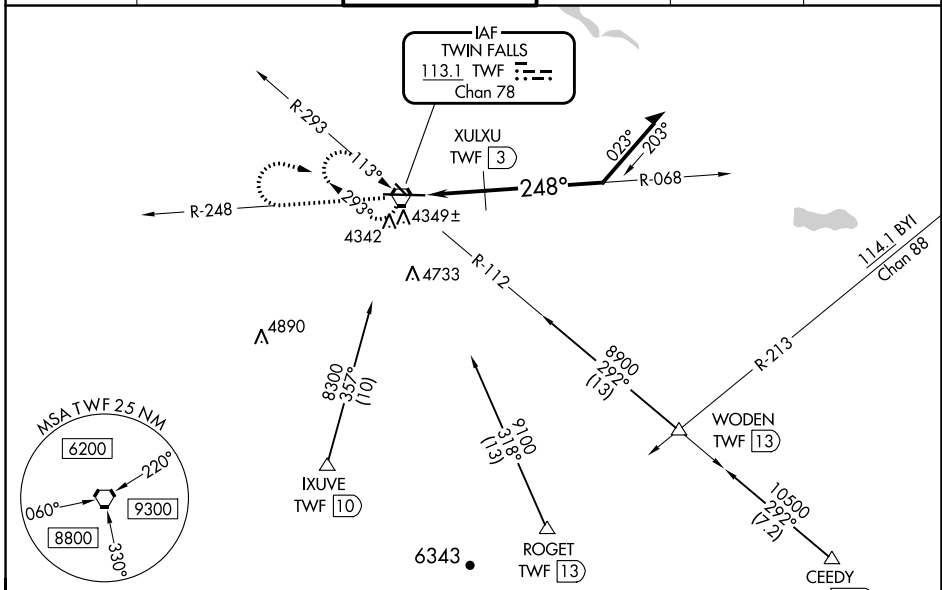
JOSLIN FLD/MAGIC VALLEY RGNL (TWF)

**⚠** Night landing: Rwy 30 NA. VDP NA with Jerome altimeter setting. When local altimeter setting not received, use Jerome altimeter setting and increase all MDA 60 feet; increase S-26 Cat A visibility 1/4 mile, Cat C/D 1/8 mile, Circling Cat C 1/4 mile, and XULXU FIX S-26 Cat C/D 1/8 mile. For inop MALSR, increase S-26 Cat C/D visibility to 2 1/2 miles; when using Jerome altimeter setting increase XULXU FIX S-26 Cat C/D visibility to 1 3/8 mile.

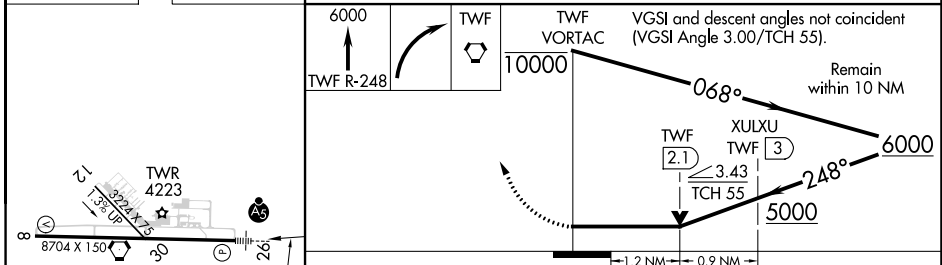
**MALSR** 

**MISSED APPROACH:** Climb to 6000 on TWF VORTAC R-248 then right turn direct TWF VORTAC and hold.

ASOS <b>135.025</b>	TWIN FALLS APP CON* <b>126.7 353.75</b>	TWIN FALLS TOWER* <b>118.2 (CTAF) 317.5</b>	GND CON <b>121.7</b>	CLNC DEL <b>123.65</b>	UNICOM <b>122.95</b>
------------------------	--	--	-------------------------	---------------------------	-------------------------



ELEV <b>4154</b>	TDZE <b>4154</b>
------------------	------------------



CATEGORY	A	B	C	D
S-26	5000-1/2 846 (900-1/2)	5000-3/4 846 (900-3/4)	5000-17/8	846 (900-17/8)
<b>C</b> CIRCLING	5000-1 1/4	846 (900-1 1/4)	5100-2 3/4 946 (1000-2 3/4)	5100-3 946 (1000-3)
XULXU FIX MINIMUMS				
S-26	4600-1/2	446 (500-1/2)	4600-7/8	446 (500-7/8)
<b>C</b> CIRCLING	4700-1 546 (600-1)	4780-1 626 (700-1)	5100-2 3/4 946 (1000-2 3/4)	5100-3 946 (1000-3)

NW-1, 26 DEC 2024 to 23 JAN 2025

NW-1, 26 DEC 2024 to 23 JAN 2025