

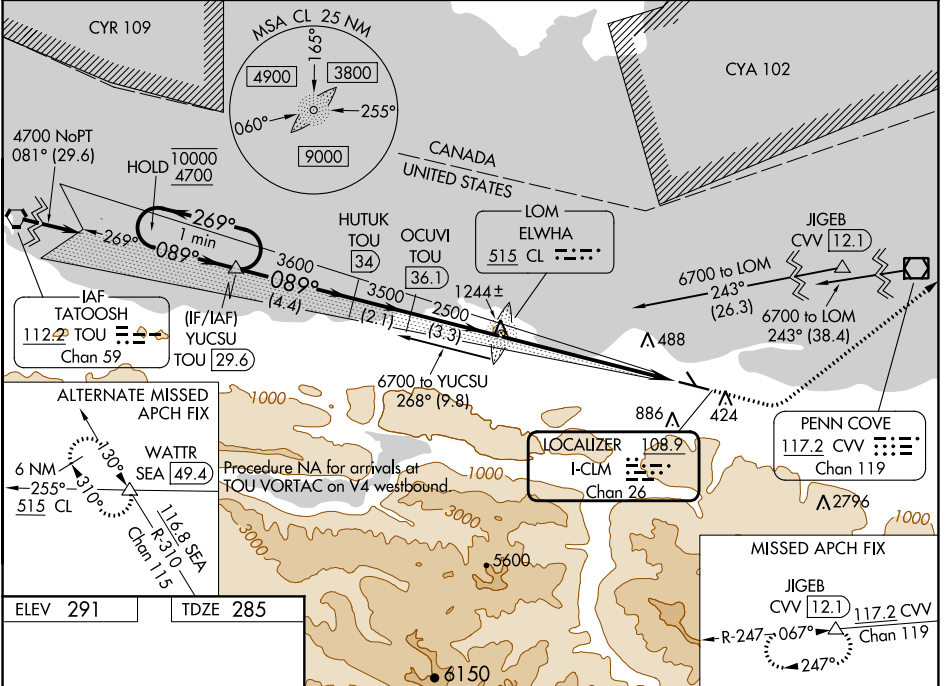
LOC/DME I-CLM 108.9 Chan 26	APP CRS 089°	Rwy Idg 6347 TDZE 285 Apt Elev 291
---	------------------------	---

ILS or LOC RWY 9

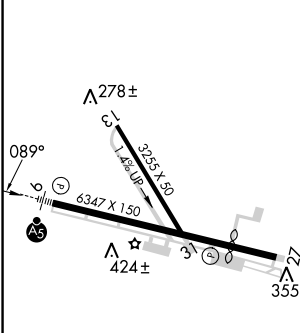
WILLIAM R FAIRCHILD INTL (CLM)

<p>DME required. ADF required for LOC only. ADF required for procedure entry at JIGEB and CVV VOR/DME.</p> <p>NA Circling NA south of Rwy 9-27. Circling Rwy 13, 31 NA at night. DME from TOU VORTAC. Simultaneous reception of I-CLM and TOU DME required. For inop ALS, increase S-LOC 9 Cat C/D visibility to 1½ SM.</p>	<p>MALSRL</p>	<p>MISSED APPROACH: Climb to 1000 then climbing left turn to 5400 on heading 030° and on CVV VOR/DME R-247 to JIGEB/CVV 12.1 DME and hold, continue climb-in-hold to 5400.</p>
--	---------------	--

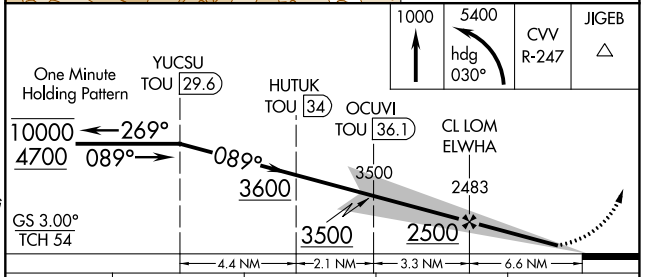
ASOS 135.175	WHIDBEY APP CON 118.2 285.65	CLNC DEL 124.15	UNICOM 122.975 (CTAF)
------------------------	--	---------------------------	---------------------------------



ELEV 291	TDZE 285
----------	----------



FAF to MAP 6.6 NM					
Knots	60	90	120	150	180
Min:Sec	6:36	4:24	3:18	2:38	2:12



CATEGORY	A	B	C	D
S-ILS 9	496-½ 211 (300-½)			
S-LOC 9	900-½	615 (700-½)	900-1¾	615 (700-1¾)
CIRCLING	900-1	609 (700-1)	900-1¾	1000-2¼ 709 (800-2¼)

NW-1, 26 DEC 2024 to 23 JAN 2025

NW-1, 26 DEC 2024 to 23 JAN 2025