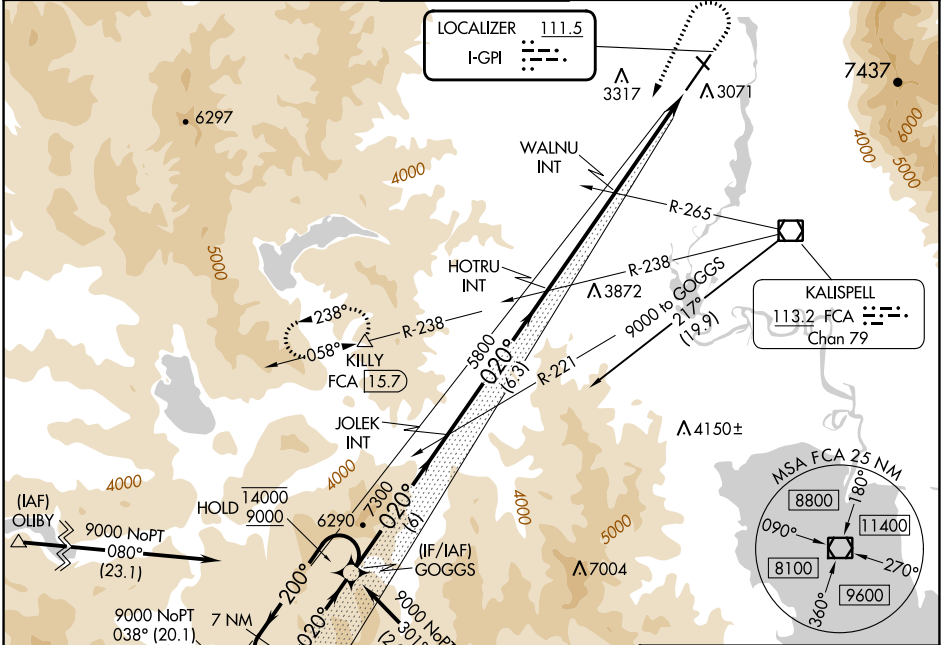


LOC I-GPI <b>111.5</b>	APP CRS <b>020°</b>	Rwy Idg <b>9007</b>
		TDZE <b>2966</b>
		Apt Elev <b>2977</b>

# ILS or LOC RWY 2

GLACIER PARK INTL (GPI)

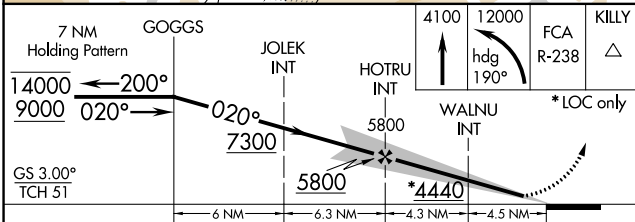
DME required. RNAV 1-GPS or RADAR required for procedure entry.		MALSR	MISSED APPROACH: Climb to 4100 then climbing left turn to 12000 on heading 190° and FCA VOR/DME R-238 to KILLY/15.7 DME and hold, continue climb-in-hold to 12000.	
Inop table does not apply to S-LOC 2 Cats C/D.				
-15°C				
ATIS <b>132.625</b>	SALT LAKE CENTER <b>127.075 244.875</b>	GLACIER TOWER* <b>124.55 (CTAF) 0</b>	GND CON <b>121.6</b>	UNICOM <b>122.95</b>



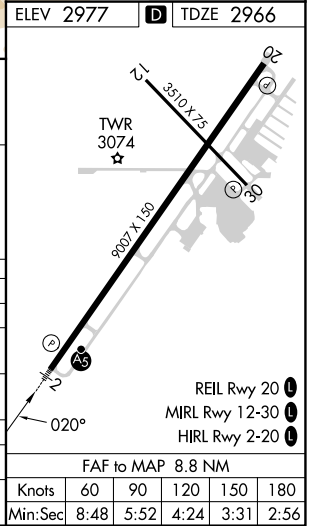
NW-1, 26 DEC 2024 to 23 JAN 2025

NW-1, 26 DEC 2024 to 23 JAN 2025

ELEV 2977	<b>D</b> TDZE 2966
-----------	--------------------



CATEGORY	A	B	C	D
S-ILS 2	3166-1/2 200 (200-1/2)			
S-LOC 2	4440-3/4 1474 (1500-3/4)	4440-1 1474 (1500-1)	4440-3	1474 (1500-3)
<b>C</b> CIRCLING	4440-1 1/4 1463 (1500-1 1/4)	4440-1 1/2 1463 (1500-1 1/2)	4440-3	1463 (1500-3)
WALNU FIX MINIMUMS (DUAL VOR RECEIVERS REQUIRED)				
S-LOC 2	3520-1/2	554 (600-1/2)	3520-1 1/8	554 (600-1 1/8)
<b>C</b> CIRCLING	3520-1 543 (600-1)	3580-1 603 (700-1)	3640-1 3/4 663 (700-3/4)	3760-2 1/2 783 (800-2 1/2)



FAF to MAP 8.8 NM					
Knots	60	90	120	150	180
Min:Sec	8:48	5:52	4:24	3:31	2:56