

LOC/DME I-HQM 108.7 Chan 24	APP CRS 241°	Rwy Idg 5000 TDZE 16 Apt Elev 18
---	------------------------	---

ILS or LOC RWY 24

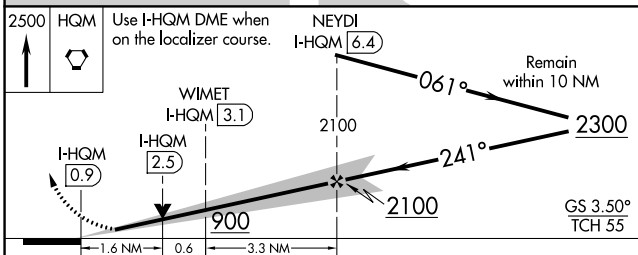
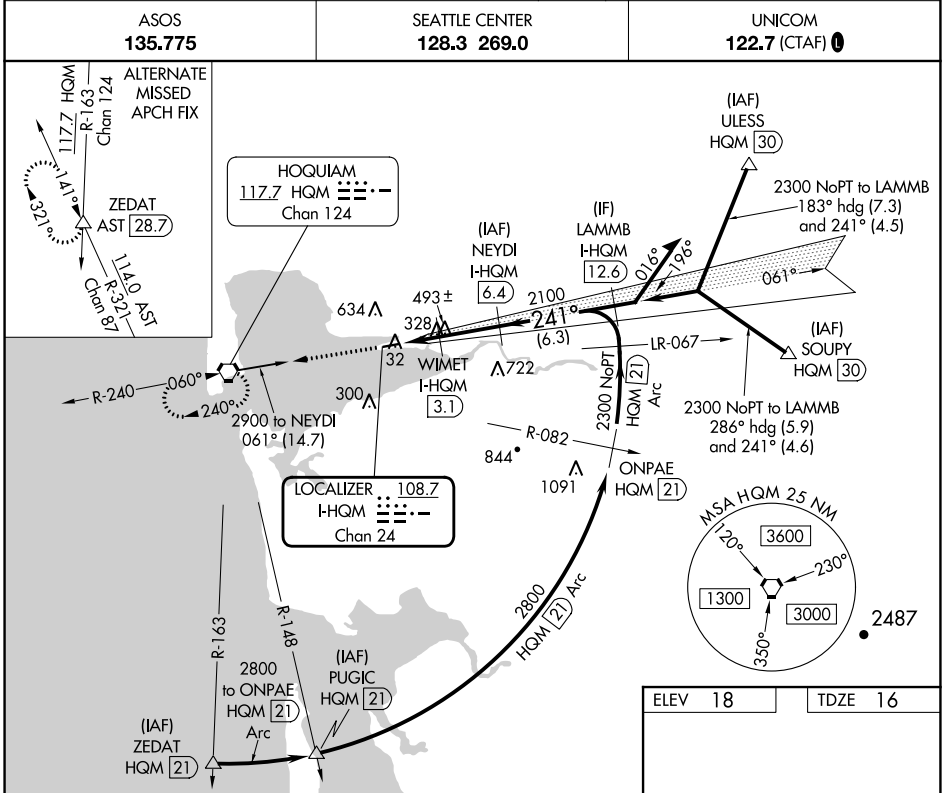
BOWERMAN FLD (HQM)

DME required.

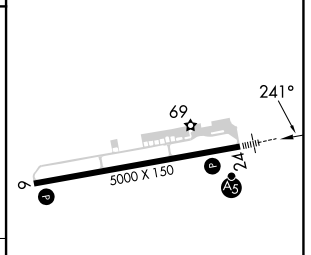
MALSR

MISSED APPROACH: Climb to 2500 direct HQM VORTAC and hold.

ASOS 135.775 **SEATTLE CENTER 128.3 269.0** **UNICOM 122.7 (CTAF)**



ELEV 18	TDZE 16
---------	---------



CATEGORY	A	B	C	D
S-ILS 24	216-1/2	200 (200-1/2)	286-1/2 270 (300-1/2)	NA
S-LOC 24	580-1/2	564 (600-1/2)	580-1 1/4 564 (600-1 1/4)	NA
CIRCLING	580-1	562 (600-1)	800-2 1/4 782 (800-2 1/4)	NA

REIL Rwy 6

HIRL Rwy 6-24

NW-1, 26 DEC 2024 to 23 JAN 2025

NW-1, 26 DEC 2024 to 23 JAN 2025