

WAAS CH 82015 W06A	APP CRS 061°	Rwy Idg TDZE Apt Elev	5000 18 18
----------------------------------------	------------------------	-----------------------------	---------------------------------------

RNAV (GPS) RWY 6

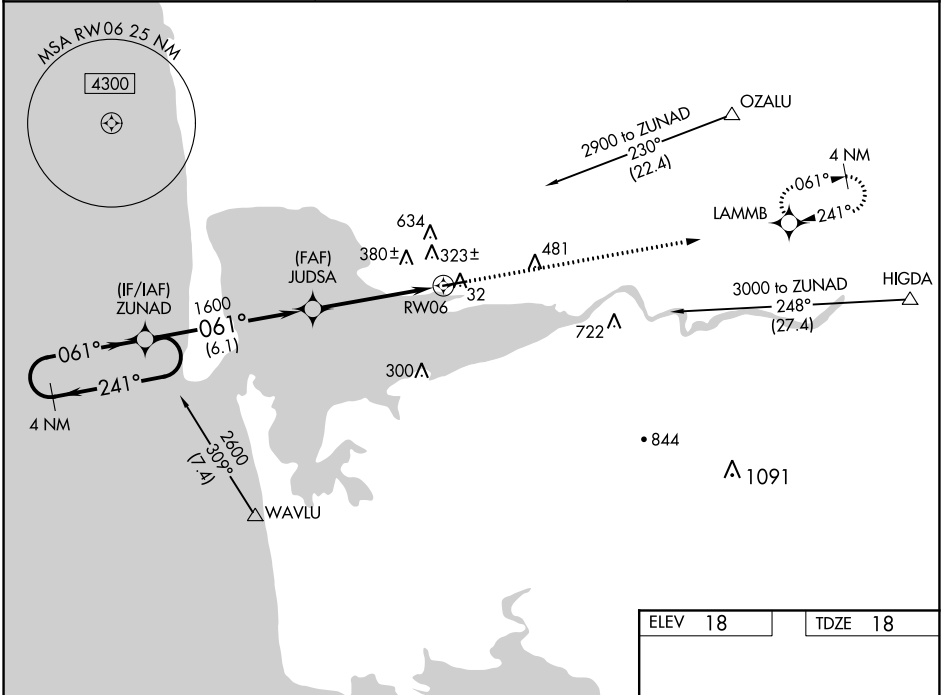
BOWERMAN FLD (HQM)

RNP APCH

⚠ Circling NA northwest of Rwy 6-24. For uncompensated Baro-VNAV systems, LNAV/VNAV NA below -15°C (5°F) or above 48°C (118°F). Rwy 6 helicopter visibility reduction below 1 SM NA. When local altimeter setting not received, procedure NA.

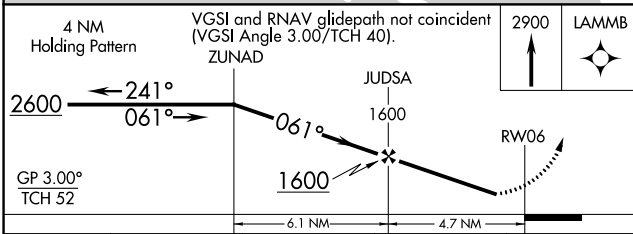
MISSED APPROACH: Climb to 2900 direct LAMMB and hold.

ASOS 135.775	SEATTLE CENTER 128.3 269.0	UNICOM 122.7 (CTAF) 0
------------------------	--------------------------------------	---------------------------------



NW-1, 26 DEC 2024 to 23 JAN 2025

NW-1, 26 DEC 2024 to 23 JAN 2025



ELEV 18	TDZE 18
---------	---------

REIL Rwy 6 0
HIRL Rwy 6-24 0

CATEGORY	A	B	C	D
LPV DA	308-1 290 (300-1)			
LNAV/VNAV DA	758-2½ 740 (800-2½)			
LNAV MDA	620-1 602 (700-1)	620-1¾ 602 (700-1¾)	620-2 602 (700-2)	620-2 602 (700-2)
CIRCLING	620-1 602 (700-1)	800-2¼ 782 (800-2¼)	860-2¾ 842 (900-2¾)	