

LOC/DME I-TJL 110.15 Chan 38 (Y)	APP CRS 195°	Rwy Idg TDZE Apt Elev	6230 6 8
--	------------------------	-----------------------------	-------------------------------------

ILS or LOC RWY 19

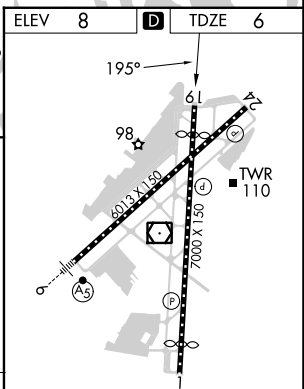
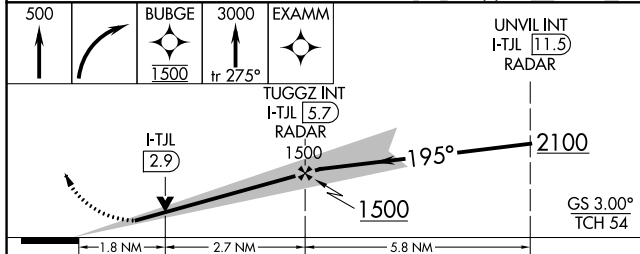
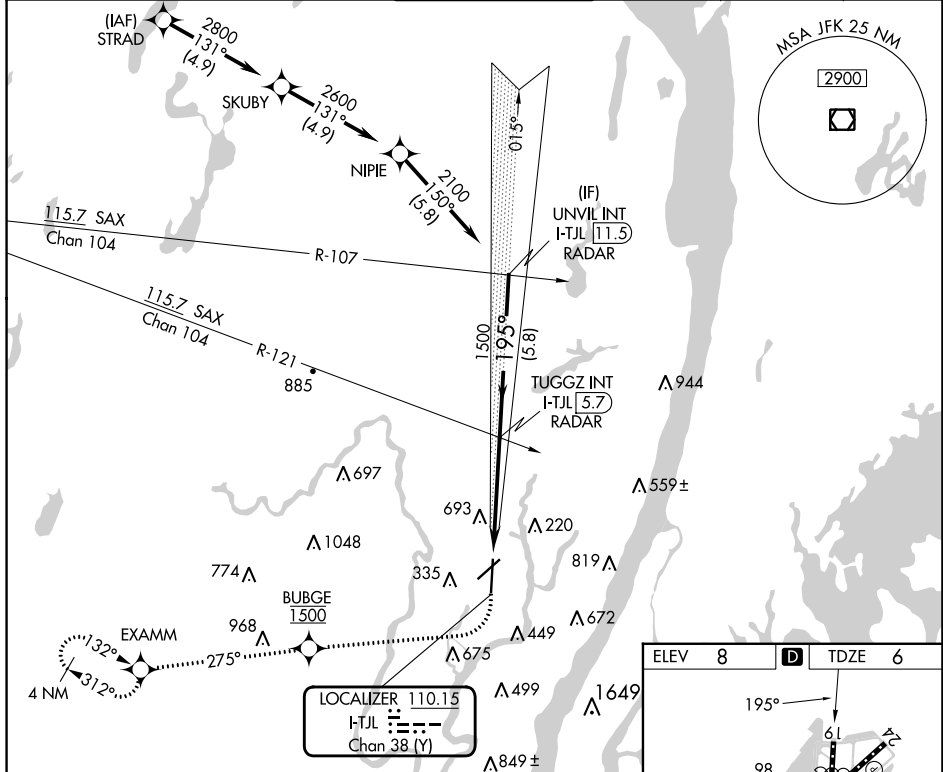
TETERBORO (TEB)

RNP APCH - GPS. RADAR required.

MISSED APPROACH: Climb to 500 then climbing right turn direct BUBGE, cross BUBGE at 1500, then climb to 3000 on track 275° to EXAMM and hold, continue climb-in-hold to 3000.

⚠️ Circling NA for Cats B, C, D northwest of Rwy 6-19.

D-ATIS 114.2 132.85	NEWARK APP CON 127.6 379.9	TETERBORO TOWER 119.5	GND CON 121.9	CLNC DEL 128.05	CPDLC
-------------------------------	--------------------------------------	---------------------------------	-------------------------	---------------------------	-------



CATEGORY	A	B	C	D
S-ILS 19		241-3/4	235 (300-3/4)	
S-LOC 19	640-1	634 (700-1)	640-1 3/4	634 (700-1 3/4)
C CIRCLING	760-1	752 (800-1)	820-2 1/2	1040-3
			812 (900-2 1/2)	1032 (1100-3)

TDZ/CL Rwys 6 and 19					
REIL Rwys 1, 6, 19 and 24					
HIRL Rwys 1-19 and 6-24					
FAF to MAP 4.5 NM					
Knots	60	90	120	150	180
Min:Sec	4:30	3:00	2:15	1:48	1:30

NE-2, 26 DEC 2024 to 23 JAN 2025

NE-2, 26 DEC 2024 to 23 JAN 2025