

WAAS CH 53723 W10A	APP CRS 101°	Rwy Idg TDZE Apt Elev	6003 74 85
--	------------------------	-----------------------------	---------------------------------------

RNAV (GPS) RWY 10

MILLVILLE MUNI (MIV)

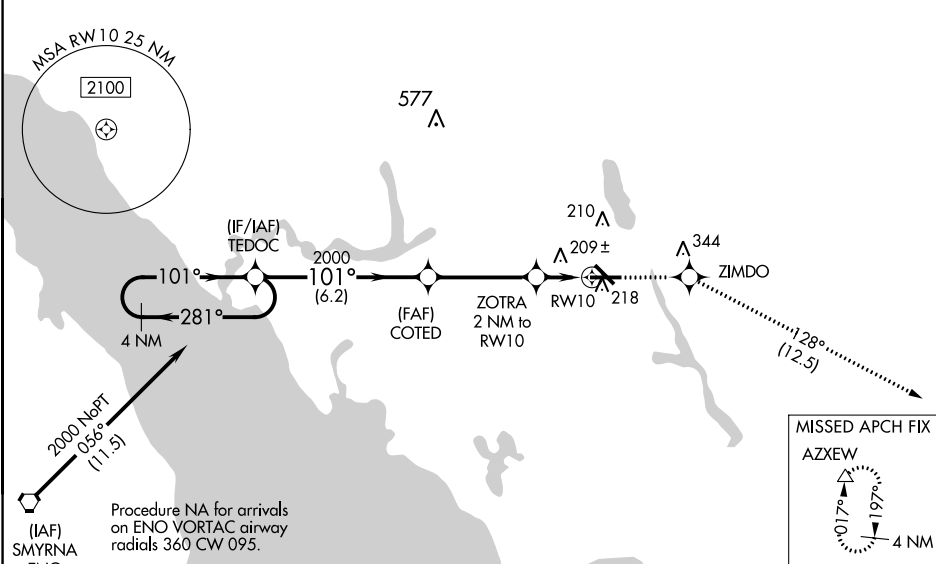
RNP APCH-GPS.

▼ For uncompensated Baro-VNAV systems, LNAV/VNAV NA below -15°C or above 54°C. When local altimeter setting not received, use Atlantic City altimeter setting; increase LPV DA to 330 feet; LNAV/VNAV DA to 571 feet and visibility ¼ SM; increase all MDAs 60 feet and visibility Cat C and D ½ SM. Baro-VNAV and VDP NA when using Atlantic City altimeter setting. For inop MALSRS when using Atlantic City altimeter setting, increase LNAV/VNAV all Cat visibility to 1⅝.



MALSRS MISSED APPROACH: Climb to 2000 direct ZIMDO and on track 128° to AZXEW and hold.

ASOS 119.6	ATLANTIC CITY APP CON 124.6 327-125	UNICOM 123.0 (CTAF) 0
----------------------	---	---------------------------------



NE-2, 26 DEC 2024 to 23 JAN 2025

NE-2, 26 DEC 2024 to 23 JAN 2025

ELEV 85		TDZE 74					
4 NM Holding Pattern		TEDOC	COTED				
		2000	2000				
GP 3.00° TCH 52		ZOTRA 2 NM to RW10	1.1 NM to RW10				
<table border="1"> <tr> <td>2000</td> <td>ZIMDO</td> <td>tr 128°</td> <td>AZXEW</td> </tr> </table>		2000	ZIMDO	tr 128°	AZXEW		
2000	ZIMDO	tr 128°	AZXEW				
CATEGORY	A	B	C				
LPV DA	274-½		200 (200-½)				
LNAV/VNAV DA	515-1		441 (500-1)				
LNAV MDA	460-½	386 (400-½)	460-⅝ 386 (400-⅝)				
CIRCLING	520-1 435 (500-1)	580-1 495 (500-1)	660-1½ 575 (600-1½) 660-2 575 (600-2)				

MIRL Rwy's 10-28 and 14-32 0