

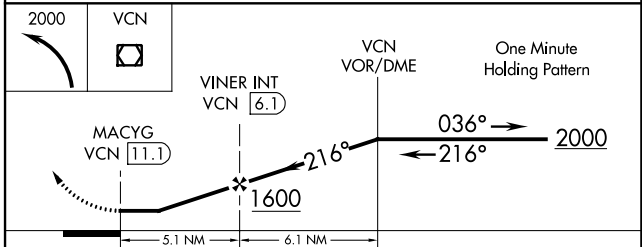
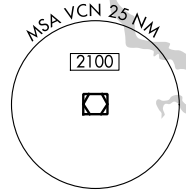
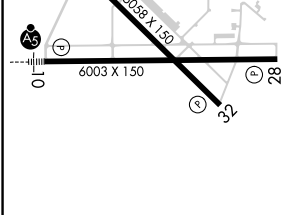
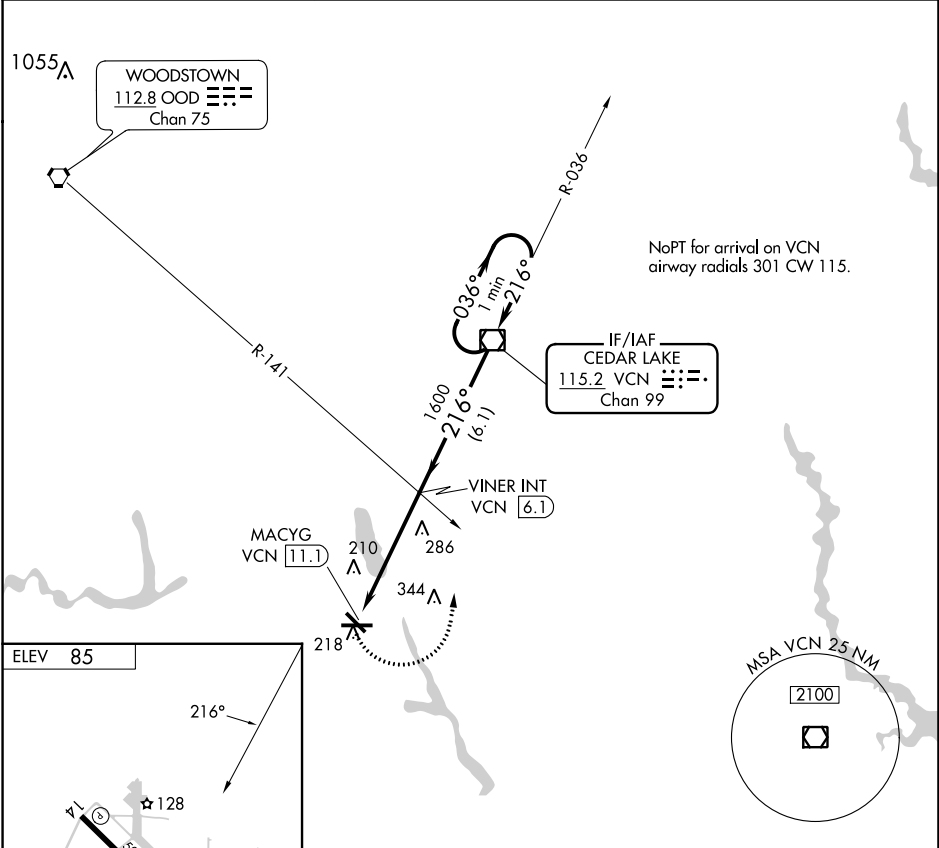
VOR/DME VCN 115.2 Chan 99	APP CRS 216°	Rwy Idg TDZE Apt Elev N/A 85
-----------------------------------------------	------------------------	-----------------------------------------------------

VOR-A
MILLVILLE MUNI (MIV)

▼ When local altimeter setting not received, use Atlantic City altimeter setting and increase all MDAs 60 feet and visibility Circling Cat C ¼ SM.

MISSED APPROACH: Climbing left turn to 2000 direct VCN VOR/DME and hold.

ASOS 119.6	ATLANTIC CITY APP CON 124.6 327.125	UNICOM 123.0 (CTAF) 0
----------------------	-----------------------------------------------	---------------------------------



FAF to MAP 5.1 NM						
Knots	60	90	120	150	180	
Min:Sec	5:06	3:24	2:33	2:02	1:42	
CATEGORY	A		B		C	D
CIRCLING	600-1		515 (600-1)		660-1½ 575 (600-1½)	660-2 575 (600-2)

NE-2, 26 DEC 2024 to 23 JAN 2025

NE-2, 26 DEC 2024 to 23 JAN 2025