

LOC I-MQY <b>111.1</b>	APP CRS <b>321°</b>	Rwy Idg TDZE Apt Elev	<b>8038</b> <b>518</b> <b>543</b>
---------------------------	------------------------	-----------------------------	---

# ILS or LOC/DME RWY 32

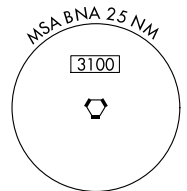
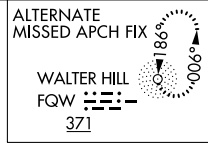
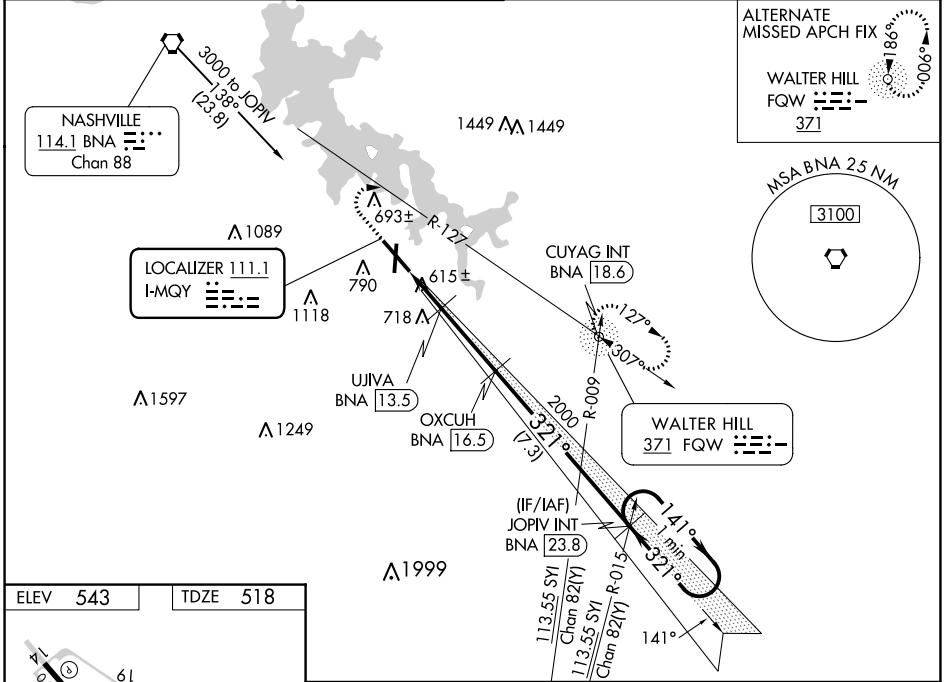
SMYRNA (MQY)

**⚠** DME from BNA VORTAC, simultaneous reception of I-MQY and BNA DME required. For inop MALSRR, increase S-LOC 32 Cats C/D visibility to 1 mile. For inop MALSRR when using Nashville Intl altimeter setting, increase S-LOC 32 Cats C/D visibility 3/8 mile. When local altimeter setting not received, use Nashville Intl altimeter setting and increase all DA to 749 feet and all MDA 40 feet; increase S-LOC 32 Cats C/D visibility 1/8 mile and increase Circling Cats C/D visibility 1/4 mile. VDP NA when using Nashville Intl altimeter setting.

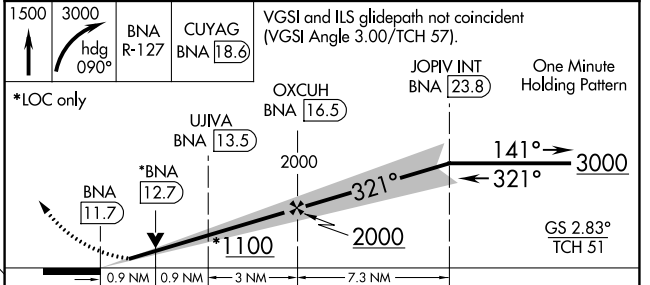
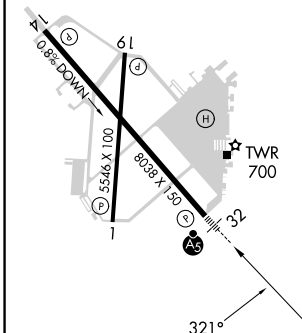


**MISSED APPROACH:** Climb to 1500 then climbing right turn to 3000 on heading 090° and BNA VORTAC R-127 to CUYAG INT/ BNA VORTAC 18.6 DME and hold.

AWOS-3PT <b>119.125</b>	NASHVILLE APP CON <b>118.4 360.7</b>	SMYRNA TOWER ✳ <b>118.5 (CTAF) 0 233.1</b>	GND CON <b>121.4</b>	CLNC DEL <b>121.4</b>	CLNC DEL <b>121.7</b> (When twr closed)	UNICOM <b>122.95</b>
----------------------------	---	---	-------------------------	--------------------------	---	-------------------------



ELEV 543	TDZE 518
----------	----------



CATEGORY	A	B	C	D
S-ILS 32	718-1/2 200 (200-1/2)			
S-LOC 32	880-1/2	362 (400-1/2)	880-5/8	362 (400-5/8)
<b>C</b> CIRCLING	1100-1 557 (600-1)	1200-1 657 (700-1)	1260-2 717 (800-2)	1480-2 3/4 937 (1000-2 3/4)

- REIL Rwy 14 **1**
- HIRL Rwy 14-32 **1**
- MIRL Rwy 1-19 **1**
- REIL Rwy 1, 19, and 32

SE-1, 26 DEC 2024 to 23 JAN 2025

SE-1, 26 DEC 2024 to 23 JAN 2025