


WAAS CH 93512 W32A	APP CRS 321°	Rwy Idg TDZE Apt Elev	8038 518 543
--	------------------------	-----------------------------	---

RNAV (GPS) RWY 32

SMYRNA (MQY)

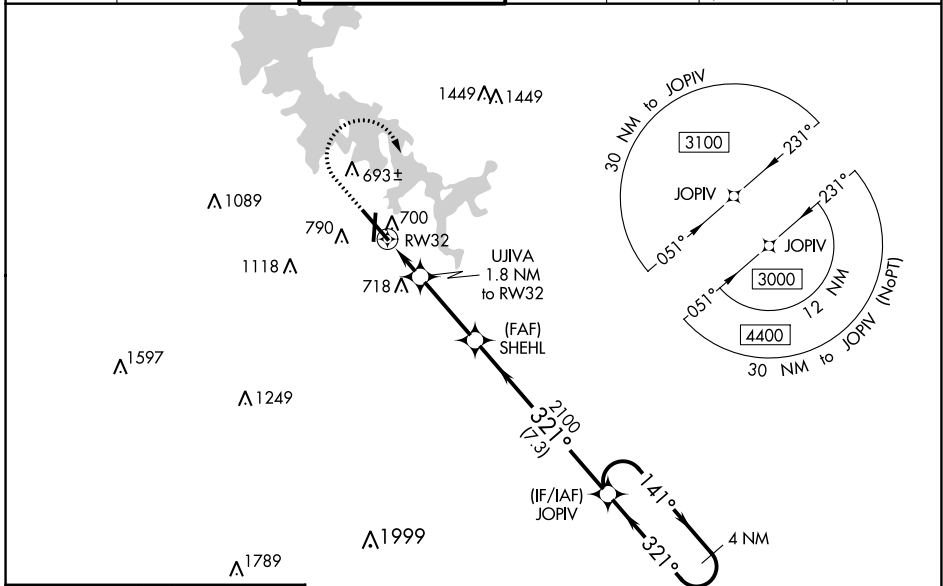
⚠ For uncompensated Baro-VNAV systems, LNAV/VNAV NA below -16°C (4°F) or above 54°C (130°F). DME/DME RNP-0.3 NA. For inop MALS/R when using Nashville Intl altimeter setting, increase LNAV/VNAV all Cats visibility to 1 1/8 mile. When local altimeter setting not received, use Nashville Intl altimeter setting and increase LPV DA to 749 feet, LNAV/VNAV DA to 998 feet, and all MDA 40 feet; increase LNAV Cats C/D visibility 1/8 mile and increase Circling Cat C visibility 1/4 mile. Baro-VNAV and VDP NA when using Nashville Intl altimeter setting.

MALS/R

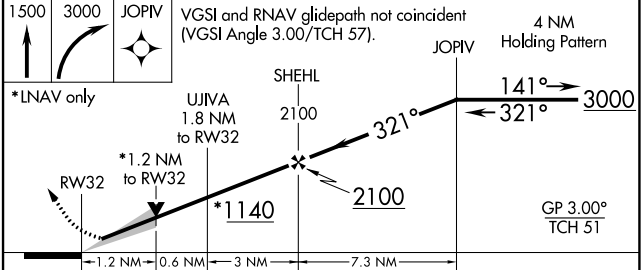
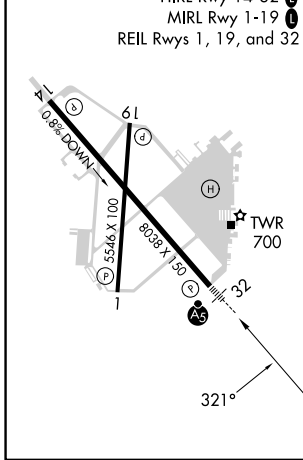


MISSED APPROACH:
Climb to 1500 then climbing right turn to 3000 direct JOPIV and hold.

AWOS-3PT 119.125	NASHVILLE APP CON 118.4 360.7	SMYRNA TOWER ★ 118.5 (CTAF) 233.1	GND CON 121.4	CLNC DEL 121.4	CLNC DEL 121.7 (When twr closed)	UNICOM 122.95
----------------------------	---	---	-------------------------	--------------------------	---	-------------------------



ELEV 543	TDZE 518
-----------------	-----------------



CATEGORY	A	B	C	D
LPV DA		718-1/2	200 (200-1/2)	
LNAV/VNAV DA		967-1	449 (500-1)	
LNAV MDA	960-1/2	442 (500-1/2)	960-7/8	442 (500-7/8)
C CIRCLING	1100-1 557 (600-1)	1200-1 657 (700-1)	1260-2 717 (800-2)	1480-3 937 (1000-3)

SE-1, 26 DEC 2024 to 23 JAN 2025

SE-1, 26 DEC 2024 to 23 JAN 2025